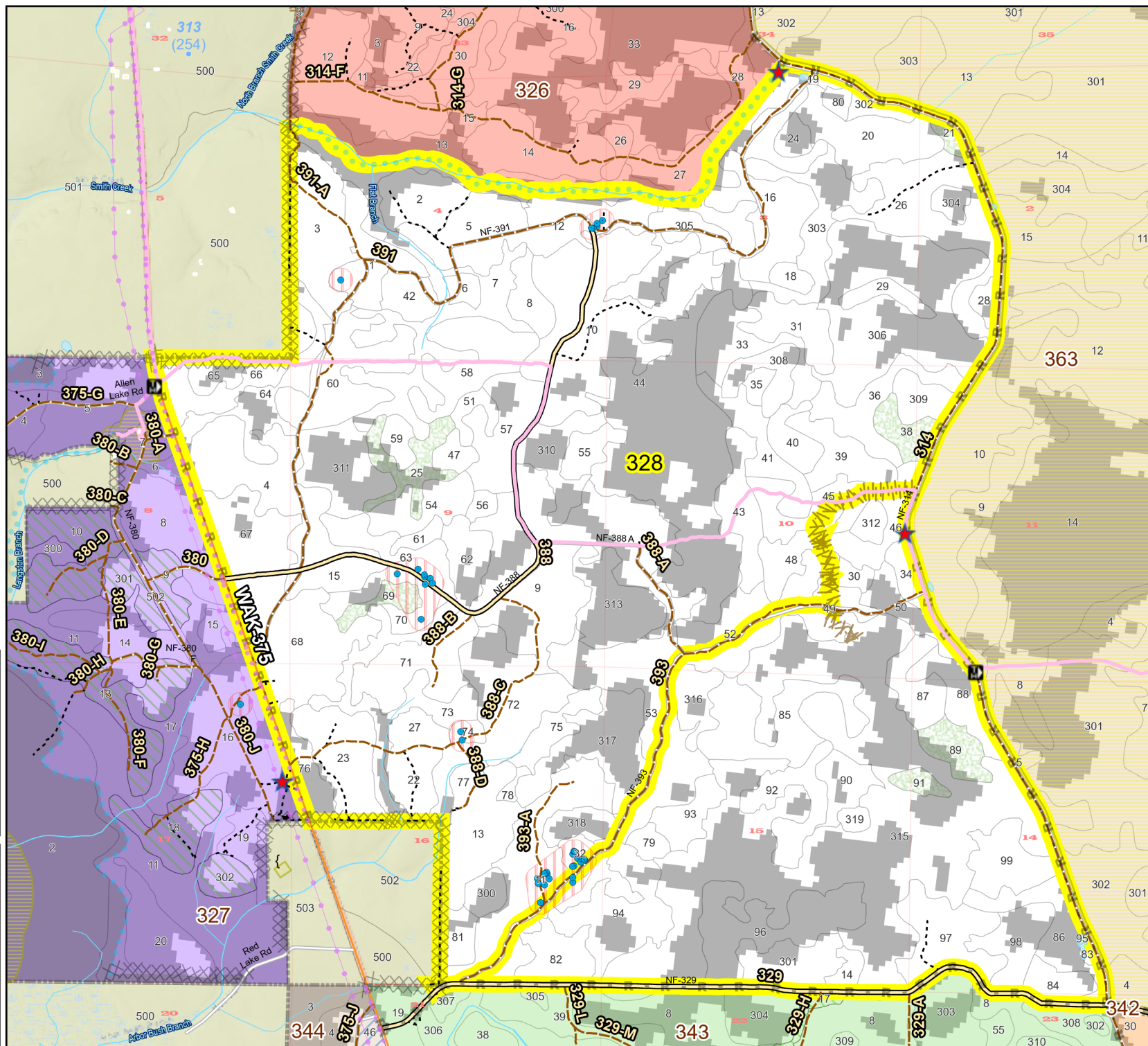
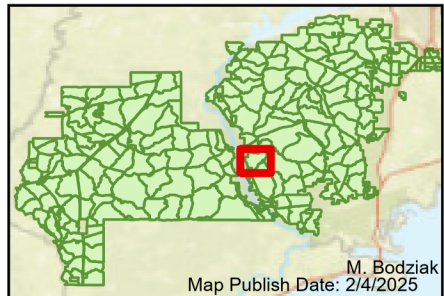
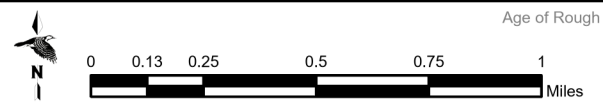


Prescribe Burn Map  
 District: Wakulla  
 Apalachicola National Forest  
**Burn Unit 328**  
 2804 FACTS Reportable Acres  
 2189 Burnable Acres  
 Last Burned: 2/28/2021



- RCW Tree
- RCW Cluster
- No Disturbance Zone
- Apiary
- Road Erosion
- Trails
- Dozer Line
- Dozer Line
- Control Line
- Road
- Other Line
- Natural Feature Line
- Private Boundary Line
- Young Longleaf
- Sapling Pines
- Savannah

Burn Unit Info		Yrs. Last Burn	
	Burn Unit		0 - 1
	Private		> 1 - 2
	USFS No Burn		> 2 - 3
			> 3 - 4
			> 4 - 5
			> 5 - 10
			> 10 - 15
			> 15 - 20
			> 20 - 25

Age of Rough Last Updated: 11/6/2024

BurnDate	Tr. Winds	Temp	Mix Ht.
RH	Disp. Index	Wind	KBDI
DSR	RX Position	Burn Boss	