

# Prescribe Burn Map

District: Wakulla  
 Apalachicola National Forest

## Burn Unit 341

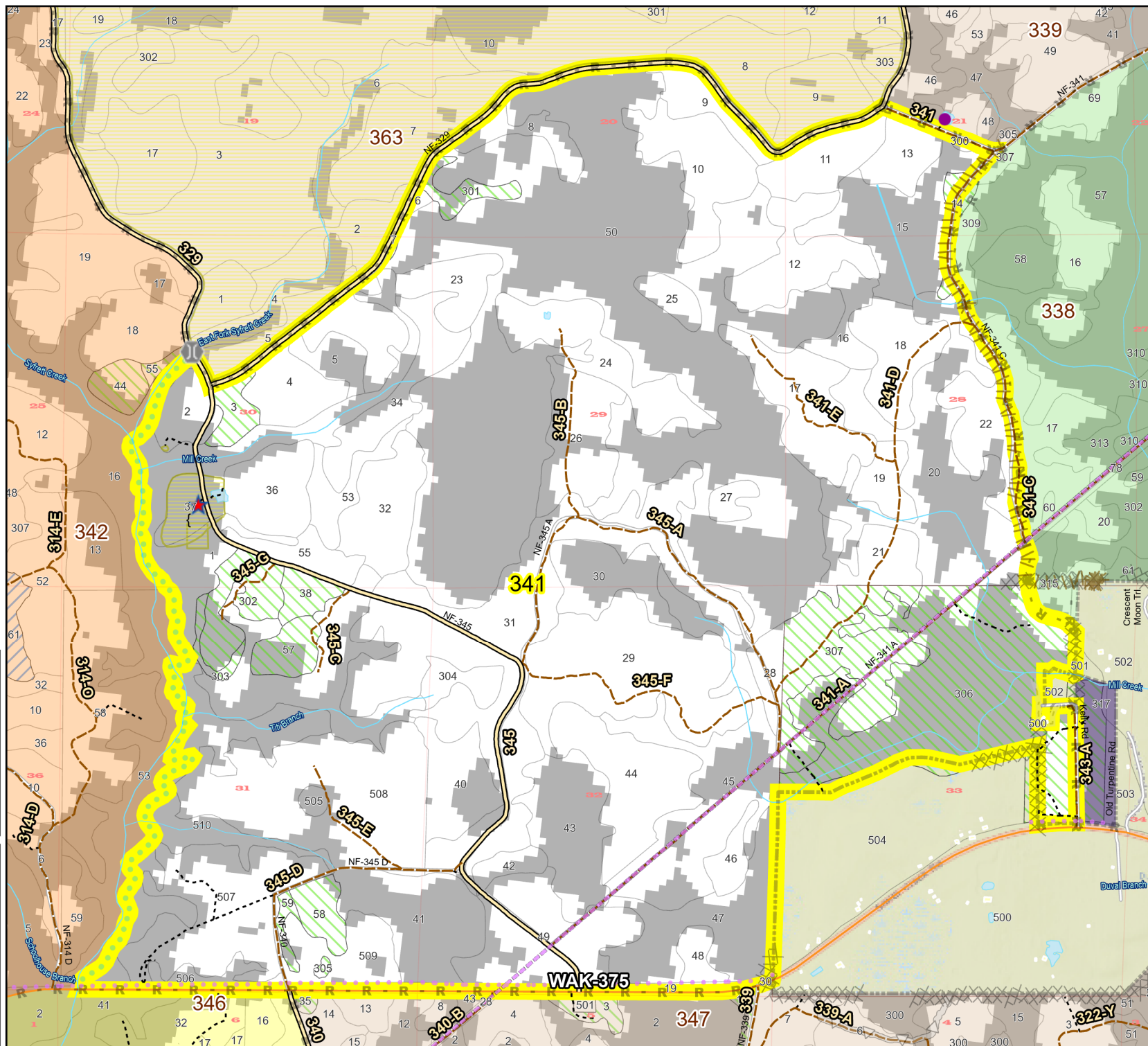
3385 FACTS Reportable Acres  
 1961 Burnable Acres  
 Last Burned: 2/14/2023

	No Disturbance Zone		Control Line
	Apiary		Road
	Road Erosion		Other Line
	Building Footprints		Natural Feature Line
	Dozer Line		Private Boundary Line
	Prep - Rx Fire		ATV Only
	Dozer Line		Access
			Young Longleaf
			Sapling Pines

Burn Unit Info	
	Burn Unit
	Private
	USFS No Burn
Burnable Area	
	Did not burn last 27 yrs
	Burned during last 27 yrs

Yrs. Last Burn	Color
0 - 1	Lightest Yellow
> 1 - 2	Light Green
> 2 - 3	Light Blue
> 3 - 4	Light Orange
> 4 - 5	Light Red
> 5 - 10	Light Purple
> 10 - 15	Light Blue-Gray
> 15 - 20	Light Green-Gray
> 20 - 25	Light Purple-Gray

M. Bodziak  
 Map Publish Date: 2/4/2025



Age of Rough Last Updated: 11/6/2024

BurnDate	Tr. Winds	Temp	Mix Ht.
RH	Disp. Index	Wind	KBDI
DSR	RX Position	Burn Boss	