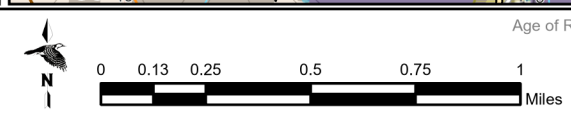
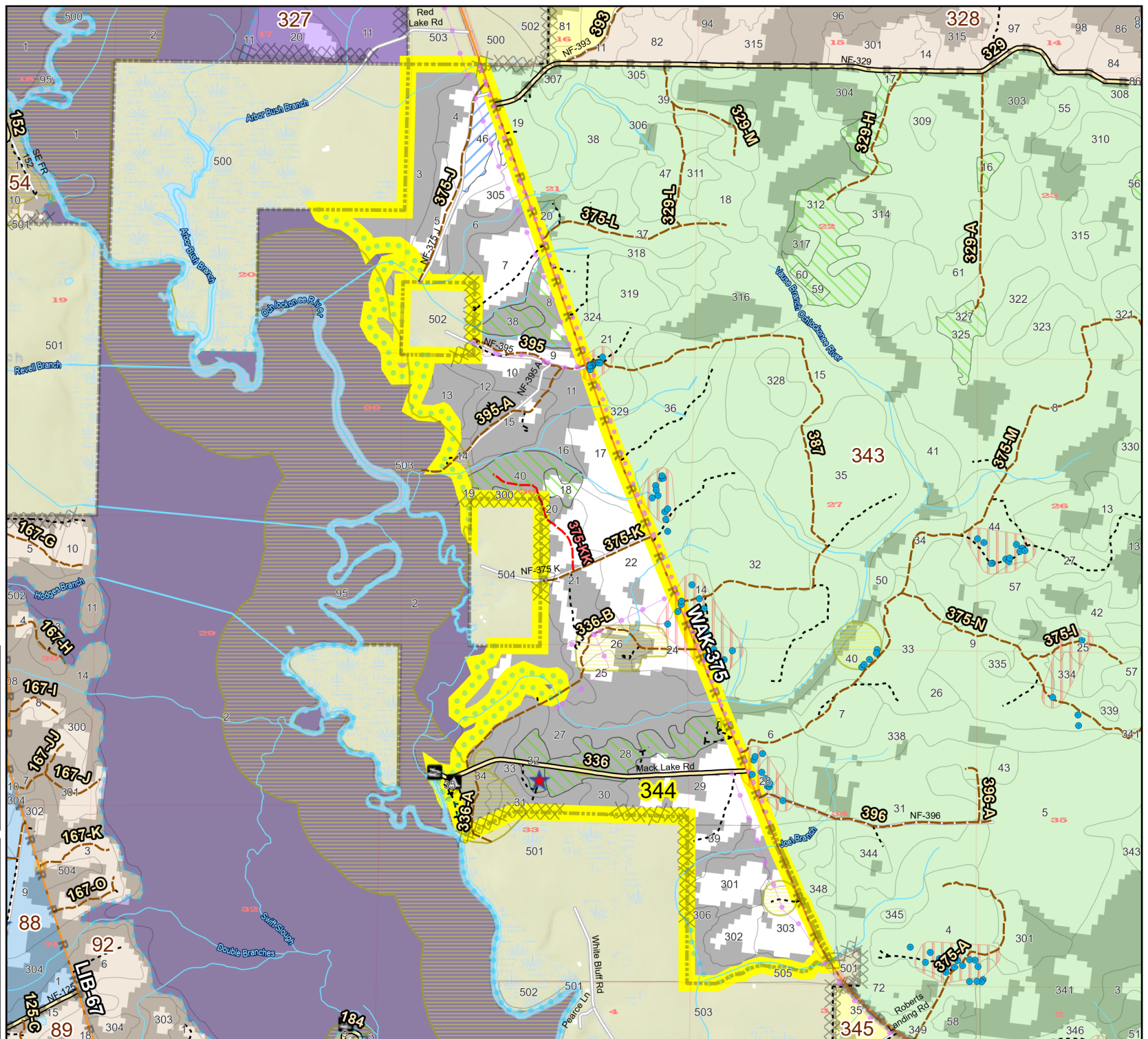
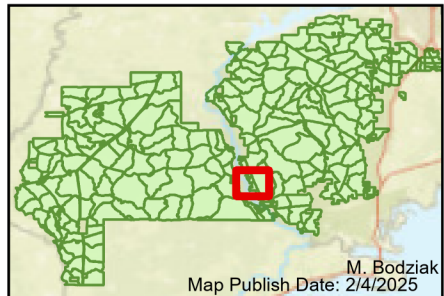


Prescribe Burn Map
 District: Wakulla
 Apalachicola National Forest
Burn Unit 344
 1074 FACTS Reportable Acres
 363 Burnable Acres
 Last Burned: 3/1/2024

- RCW Tree
- RCW Cluster
- No Disturbance Zone
- Apiary
- Road Erosion
- Dozer Line
- Control Line
- Road
- Natural Feature Line
- Private Boundary Line
- Young Longleaf
- Sapling Pines

- Burn Unit Info**
- Burn Unit
 - Private
 - USFS No Burn
- Burnable Area**
- Did not burn last 27 yrs
 - Burned during last 27 yrs
- Yrs. Last Burn**
- 0 - 1
 - > 1 - 2
 - > 2 - 3
 - > 3 - 4
 - > 4 - 5
 - > 5 - 10
 - > 10 - 15
 - > 15 - 20
 - > 20 - 25



Age of Rough Last Updated: 11/6/2024

BurnDate	Tr.Winds	Temp	Mix Ht.
RH	Disp. Index	Wind	KBDI
DSR	RX Position	Burn Boss	