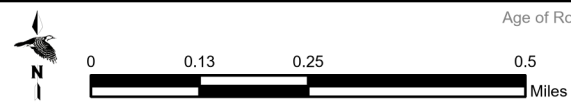
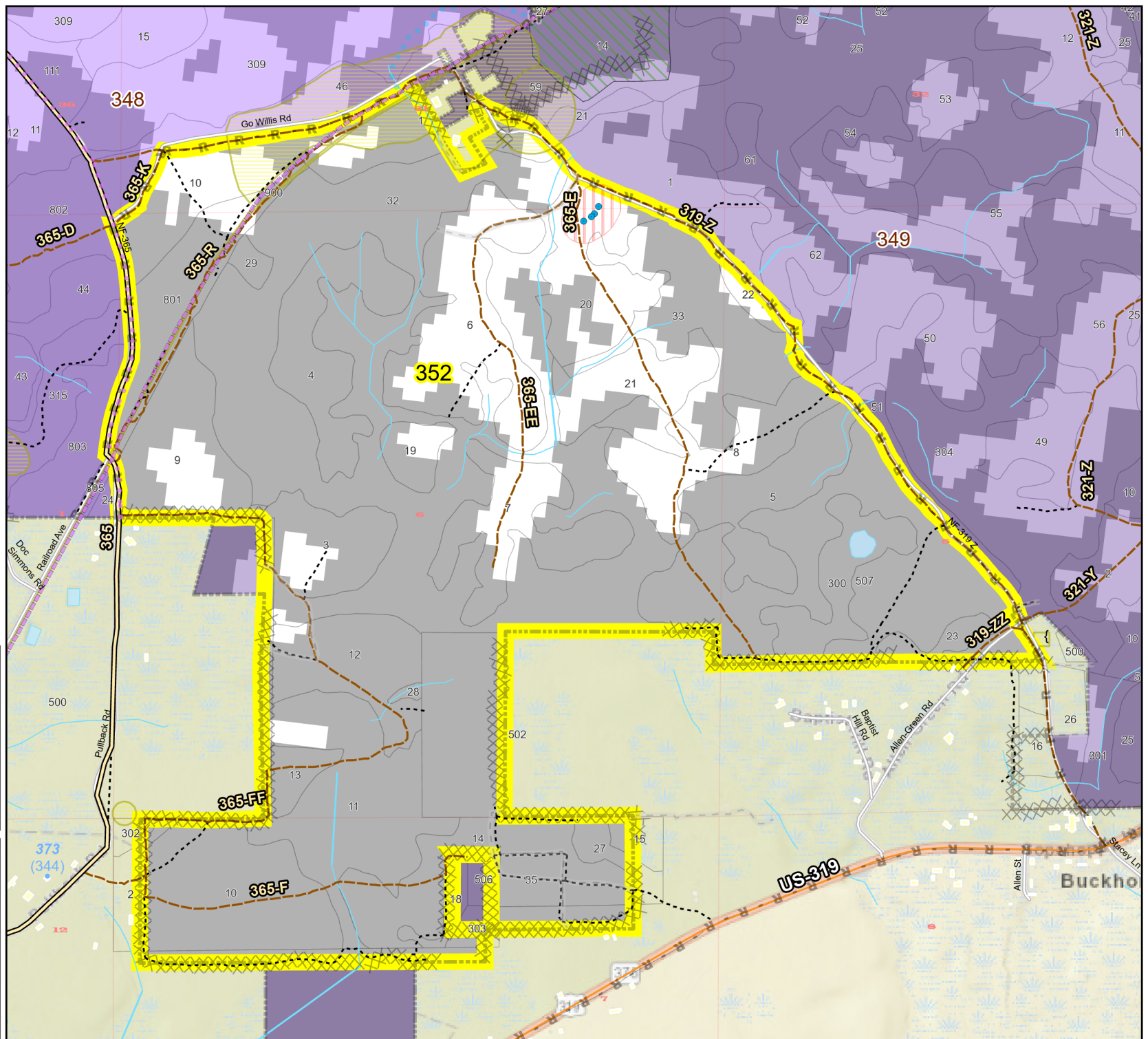
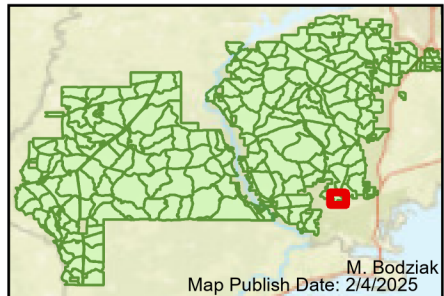


Prescribe Burn Map  
 District: Wakulla  
 Apalachicola National Forest  
**Burn Unit 352**  
 803 FACTS Reportable Acres  
 151 Burnable Acres  
 Last Burned: 2/6/2001

- RCW Tree
- RCW Cluster
- No Disturbance Zone
- Road Erosion
- Dozer Line
- Control Line Road
- Completed Hand Line
- Other Line
- Natural Feature Line
- Private Boundary Line
- Sapling Pines

- Burn Unit Info**
- Burn Unit
  - Private
  - USFS No Burn
- Burnable Area**
- Did not burn last 27 yrs
  - Burned during last 27 yrs
- Yrs. Last Burn**
- 0 - 1
  - > 1 - 2
  - > 2 - 3
  - > 3 - 4
  - > 4 - 5
  - > 5 - 10
  - > 10 - 15
  - > 15 - 20
  - > 20 - 25



Age of Rough Last Updated: 11/6/2024

BurnDate _____	Tr.Winds _____	Temp _____	Mix Ht. _____
RH _____	Disp. Index _____	Wind _____	KBDI _____
DSR _____	RX Position _____	Burn Boss _____	