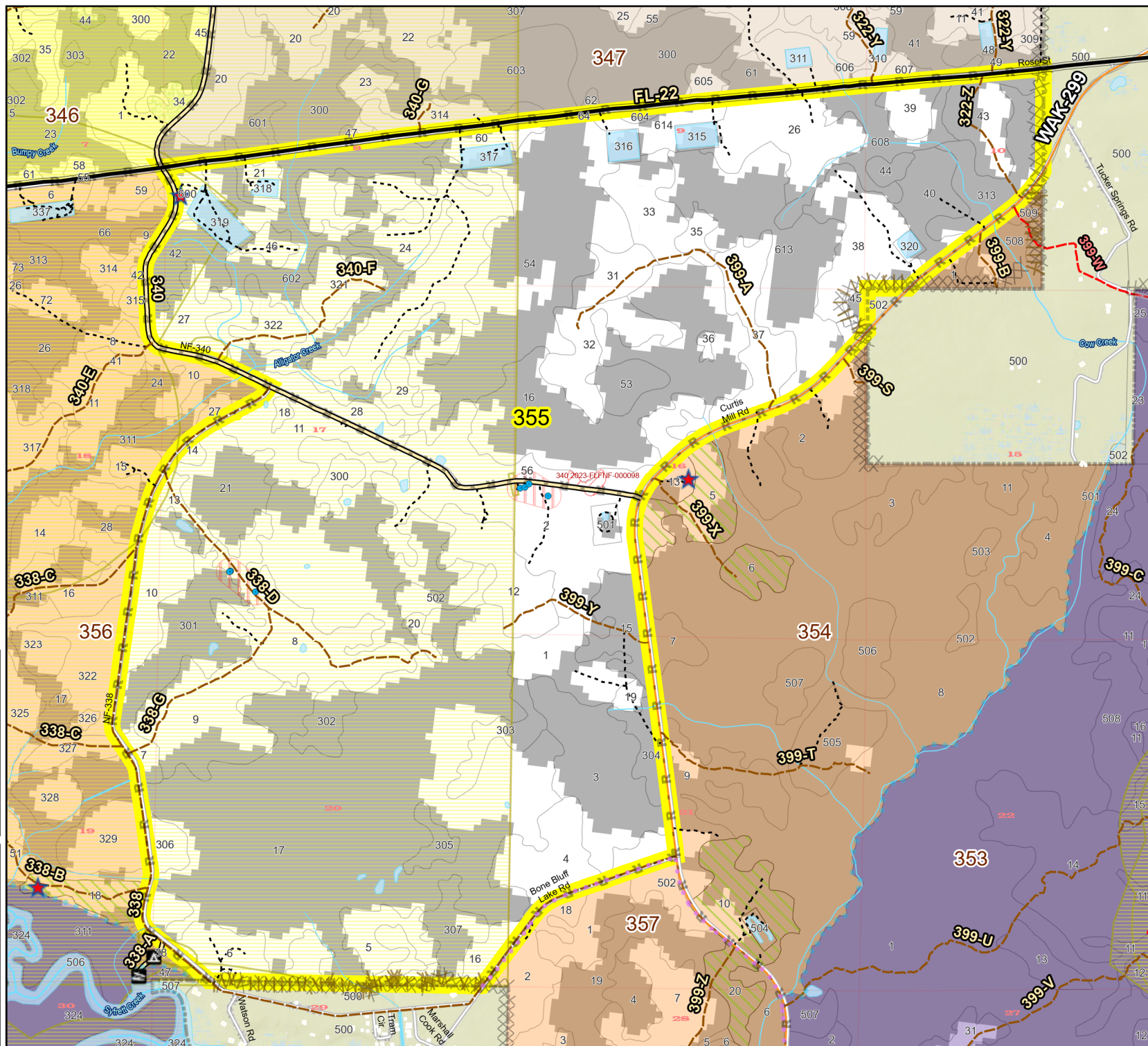
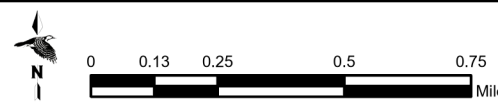
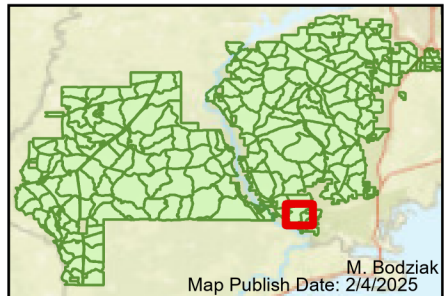


Prescribe Burn Map
 District: Wakulla
 Apalachicola National Forest
Burn Unit 355
 2625 FACTS Reportable Acres
 0 Burnable Acres
 Last Burned: 2/27/2024



- RCW Tree
- RCW Cluster
- Disturbance Zone
- Apiary
- Road Erosion
- Dozer Line
- Control Line
- Road
- Other Line
- Natural Feature Line
- Private
- Boundary Line
- Sapling Pines
- Savannah

| Burn Unit Info | | Yrs. Last Burn | |
|----------------|--------------|----------------|-----------|
| | Burn Unit | | 0 - 1 |
| | Private | | > 1 - 2 |
| | USFS No Burn | | > 2 - 3 |
| | | | > 3 - 4 |
| | | | > 4 - 5 |
| | | | > 5 - 10 |
| | | | > 10 - 15 |
| | | | > 15 - 20 |
| | | | > 20 - 25 |



Age of Rough Last Updated: 11/6/2024

| | | | |
|----------|-------------|-----------|---------|
| BurnDate | Tr.Winds | Temp | Mix Ht. |
| RH | Disp. Index | Wind | KBDI |
| DSR | RX Position | Burn Boss | |