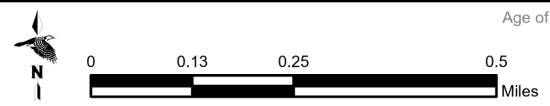
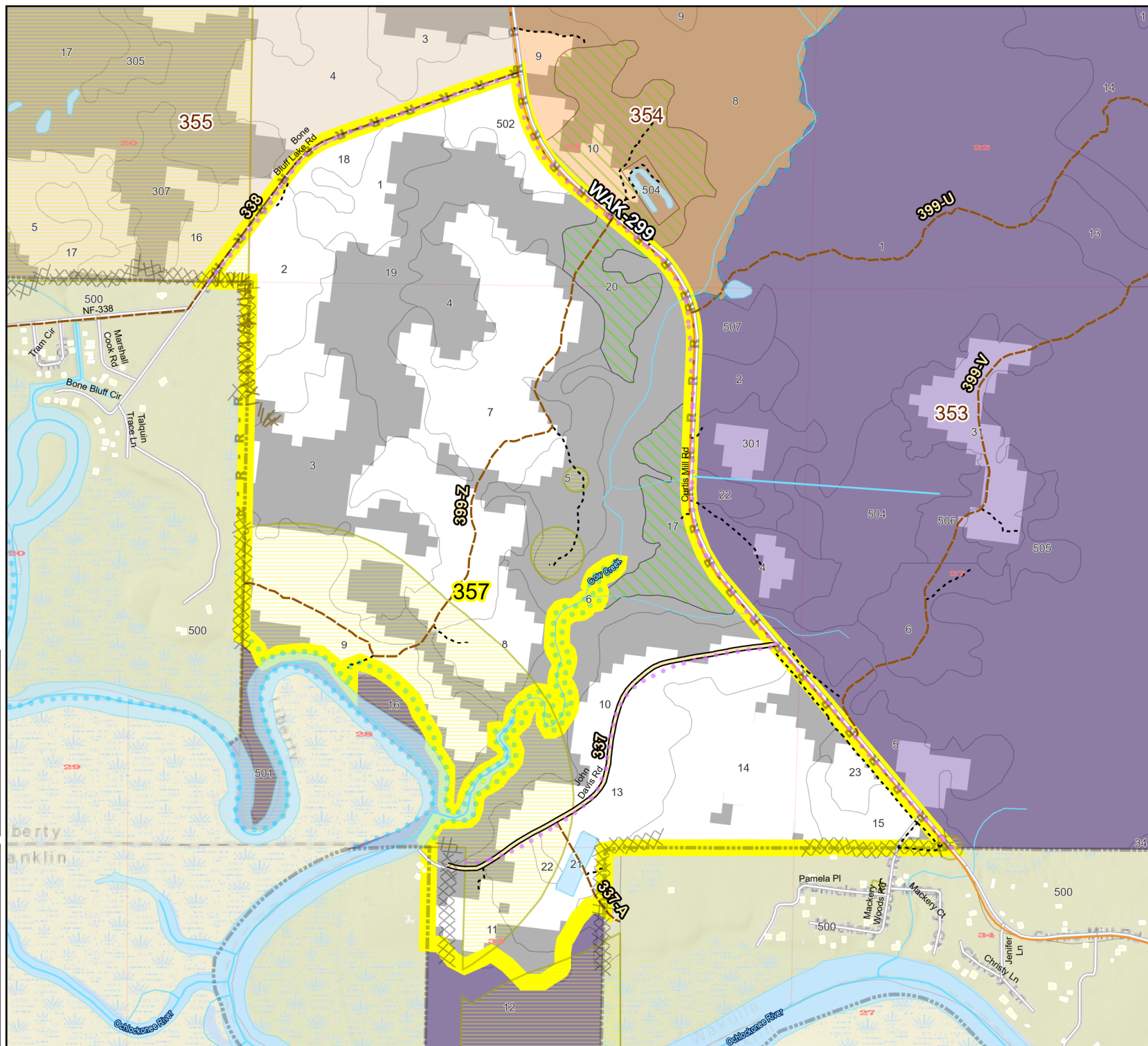
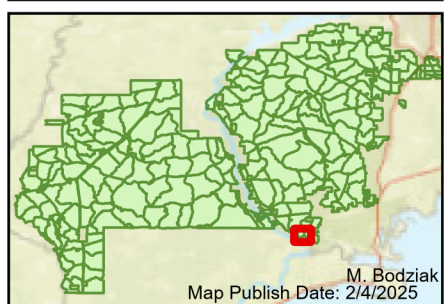


Prescribe Burn Map
 District: Wakulla
 Apalachicola National Forest
Burn Unit 357
 665 FACTS Reportable Acres
 354 Burnable Acres
 Last Burned: 3/13/2020

- No Disturbance Zone
- Road Erosion
- Dozer Line Prep - Rx Fire
- Dozer Line Control Line
- Road
- Natural Feature Line
- Private Boundary Line
- Sapling Pines

Burn Unit Info		Yrs. Last Burn	
	Burn Unit		0 - 1
	Private	> 1-2 yrs symbol"/>	> 1 - 2
	USFS No Burn	> 2-3 yrs symbol"/>	> 2 - 3
		> 3-4 yrs symbol"/>	> 3 - 4
		> 4-5 yrs symbol"/>	> 4 - 5
		> 5-10 yrs symbol"/>	> 5 - 10
		> 10-15 yrs symbol"/>	> 10 - 15
		> 15-20 yrs symbol"/>	> 15 - 20
		> 20-25 yrs symbol"/>	> 20 - 25



Age of Rough Last Updated: 11/6/2024

BurnDate	Tr.Winds	Temp	Mix Ht.
RH	Disp. Index	Wind	KBDI
DSR	RX Position	Burn Boss	