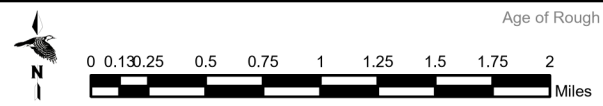
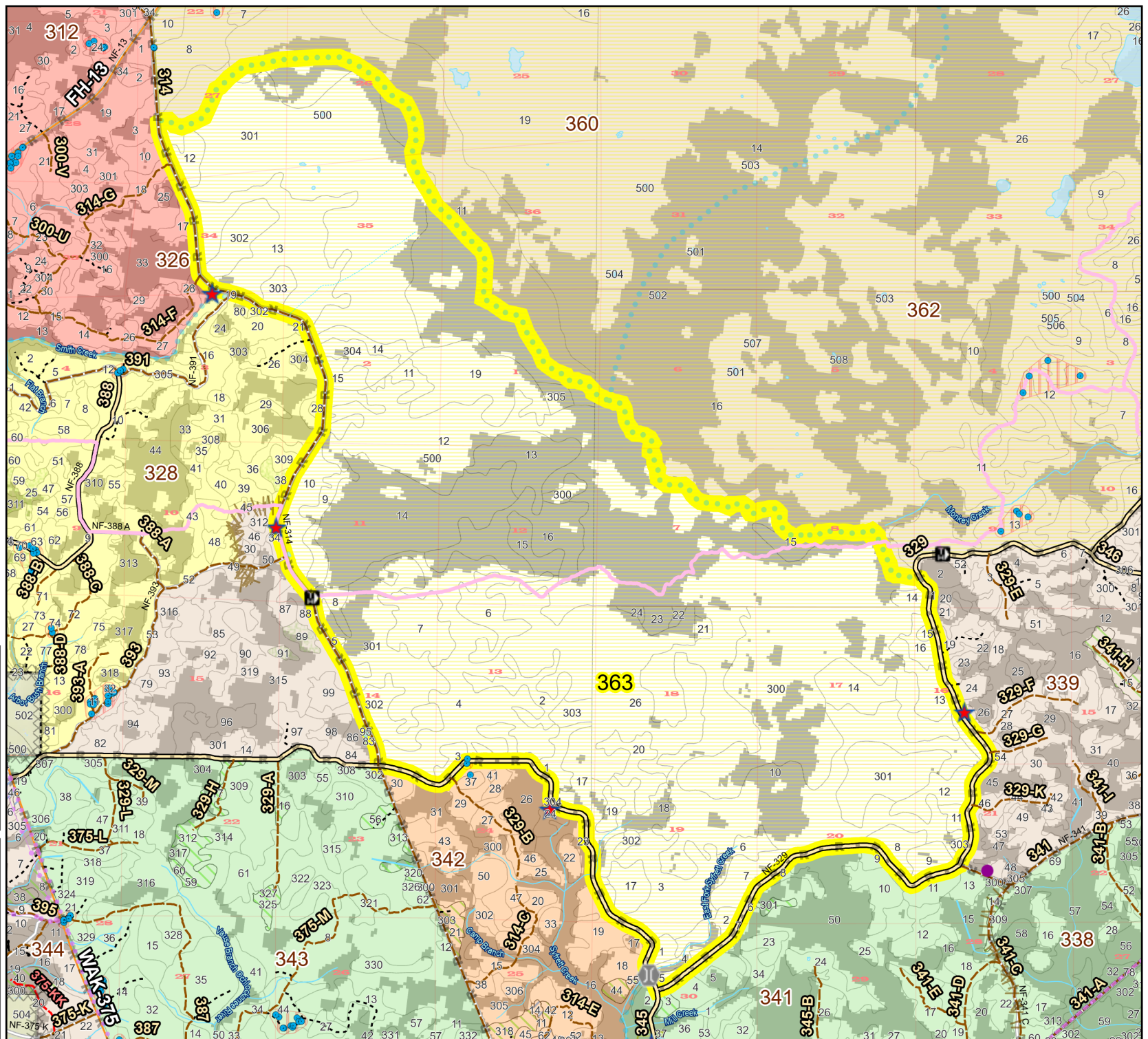
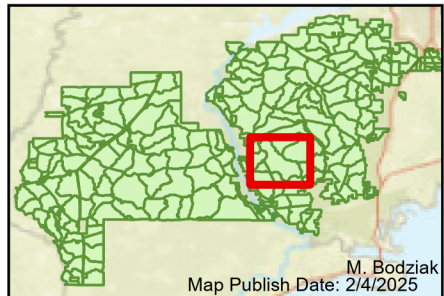


Prescribe Burn Map
 District: Wakulla
 Apalachicola National Forest
Burn Unit 363
 8306 FACTS Reportable Acres
 6111 Burnable Acres
 Last Burned: 6/8/2024

- RCW Tree
- RCW Cluster
- Disturbance Zone
- Apiary
- Road Erosion
- Trails
- Dozer Line
- Dozer Line
- Control Line
- Road
- Natural Feature Line
- Private Boundary Line
- Young Longleaf
- Sapling Pines
- Savannah

- Burn Unit Info**
- Burn Unit
 - Private
 - USFS No Burn
- Burnable Area**
- Did not burn last 27 yrs
 - Burned during last 27 yrs
- Yrs. Last Burn**
- 0 - 1
 - > 1 - 2
 - > 2 - 3
 - > 3 - 4
 - > 4 - 5
 - > 5 - 10
 - > 10 - 15
 - > 15 - 20
 - > 20 - 25



Age of Rough Last Updated: 11/6/2024

BurnDate _____	Tr. Winds _____	Temp _____	Mix Ht. _____
RH _____	Disp. Index _____	Wind _____	KBDI _____
DSR _____	RX Position _____	Burn Boss _____	