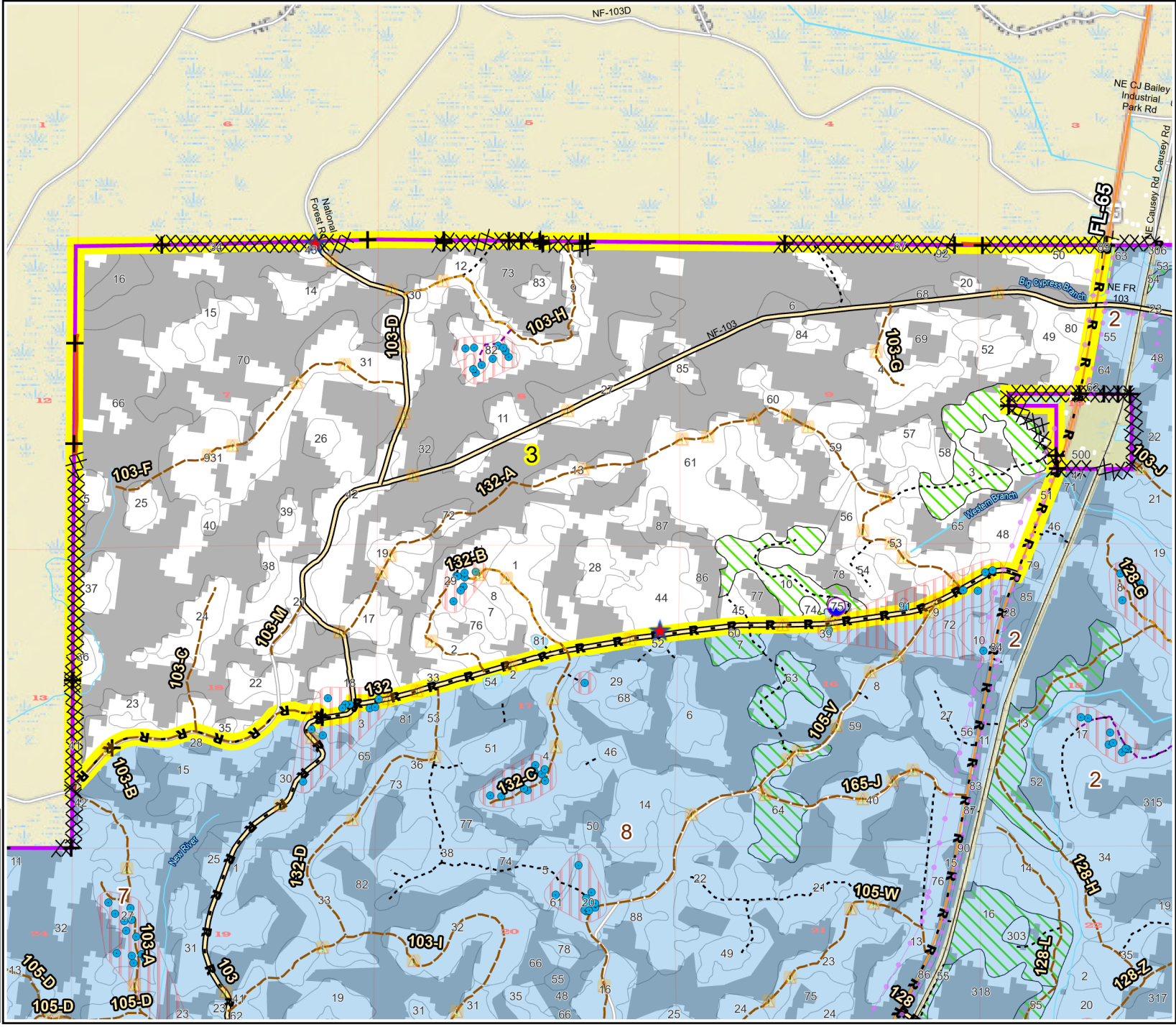


# Prescribe Burn Map

District: Apalachicola  
Apalachicola National Forest

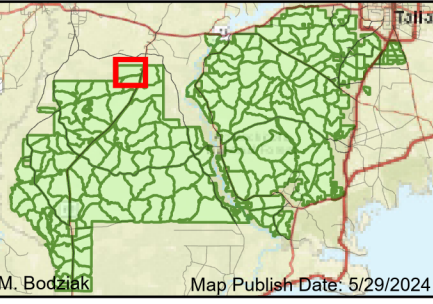
## Burn Unit 3

2926 FACTS Reportable Acres  
1444 Burnable Acres  
Last Burned: 2/7/2024

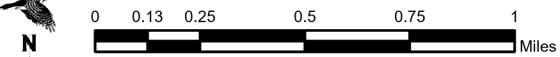


- RCW Trees
- RCW Cluster
- ★ Apiary
- Road Erosion
- + Fireline Tie In
- Control Line - Dozer
- R** Control Line - Road
- Boundary- Private
- Unknown
- access by foot
- access by utv

Burn Unit Info		Yrs. Last Burn
<span style="border: 1px solid yellow; padding: 2px;"> </span>	Burn Unit	0 - 1
<span style="background-color: gray; border: 1px solid black; padding: 2px;"> </span>	Private	> 1 - 2
<span style="border: 1px dashed black; padding: 2px;"> </span>	USFS No Burn	> 2 - 3
<span style="background-color: lightgray; border: 1px solid black; padding: 2px;"> </span>	Did not burn last 27 yrs	> 3 - 4
<span style="background-color: white; border: 1px solid black; padding: 2px;"> </span>	Burned during last 27 yrs	> 4 - 5
		> 5 - 10
		> 10 - 15
		> 15 - 20
		> 20 - 25



M. Bodziak Map Publish Date: 5/29/2024



BurnDate	Tr.Winds	Temp	Mix Ht.
RH	Disp. Index	Wind	KBDI
DSR	RX Position	Burn Boss	