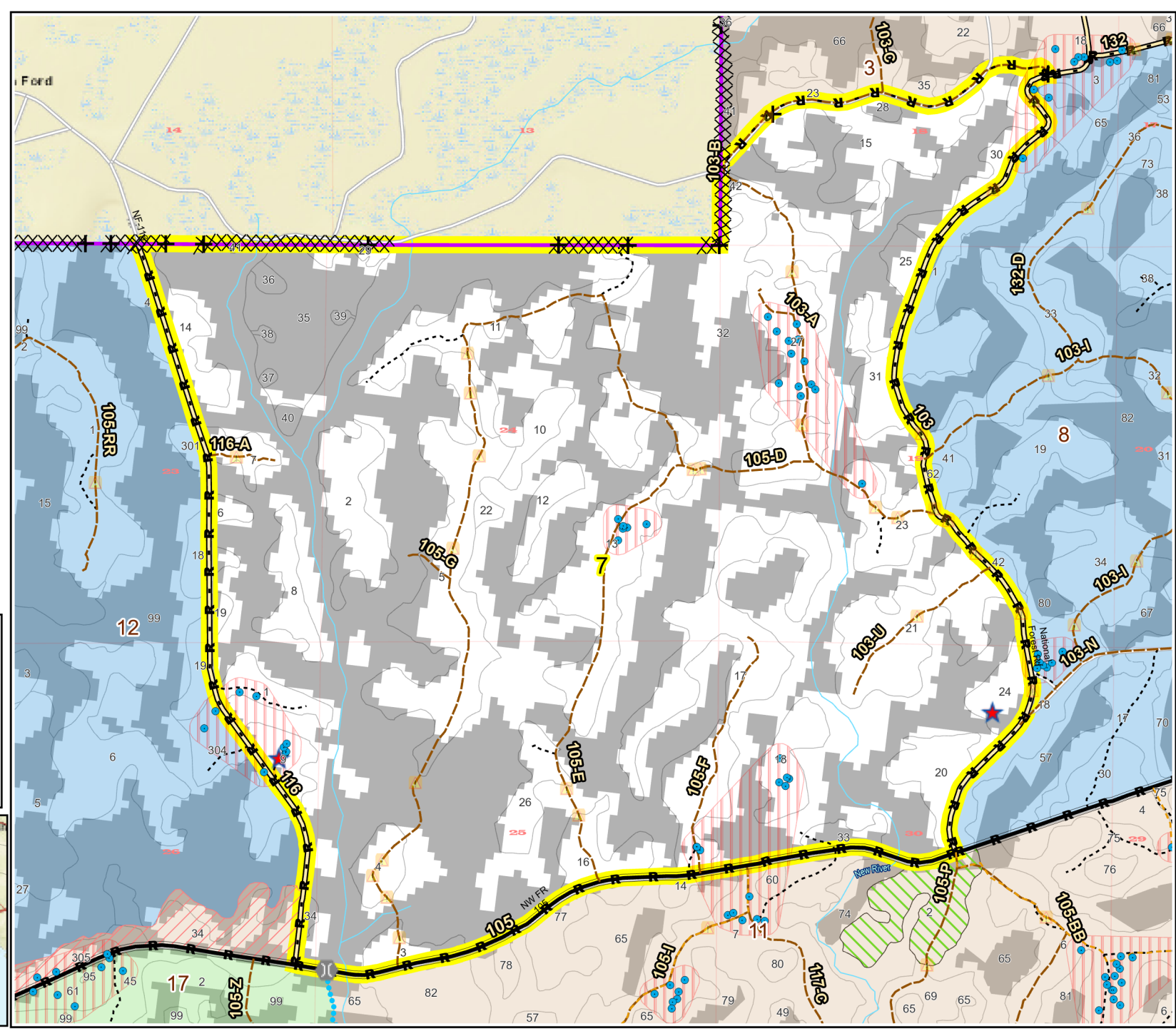
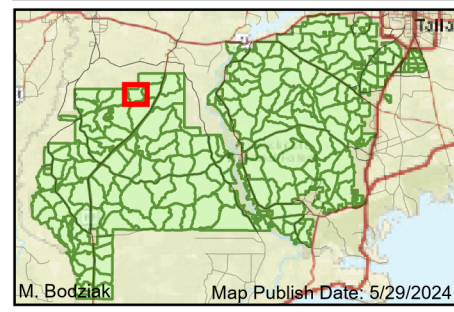


Prescribe Burn Map  
 District: Apalachicola  
 Apalachicola National Forest  
**Burn Unit 7**  
 2160 FACTS Reportable Acres  
 1135 Burnable Acres  
 Last Burned: 1/14/2022

- RCW Trees
- RCW Cluster
- ★ Apiary
- Road Erosion
- + Fireline Tie In
- Control Line - Dozer
- Control Line - Road
- Boundary- Private
- access by utv

Burn Unit Info		Yrs. Last Burn
<span style="border: 2px solid yellow; width: 15px; height: 10px; display: inline-block;"></span> Burn Unit		0 - 1
<span style="background-color: gray; width: 15px; height: 10px; display: inline-block;"></span> Private		> 1 - 2
<span style="border: 1px dashed black; width: 15px; height: 10px; display: inline-block;"></span> USFS No Burn		> 2 - 3
<span style="background-color: gray; width: 15px; height: 10px; display: inline-block;"></span> Did not burn last 27 yrs		> 3 - 4
<span style="background-color: white; width: 15px; height: 10px; display: inline-block;"></span> Burned during last 27 yrs		> 4 - 5
		> 5 - 10
		> 10 - 15
		> 15 - 20
		> 20 - 25



0 0.13 0.25 0.5 0.75 Miles

BurnDate \_\_\_\_\_

RH \_\_\_\_\_

DSR \_\_\_\_\_

Tr.Winds \_\_\_\_\_

Disp. Index \_\_\_\_\_

RX Position \_\_\_\_\_

Temp \_\_\_\_\_

Wind \_\_\_\_\_

Burn Boss \_\_\_\_\_

Mix Ht. \_\_\_\_\_

KBDI \_\_\_\_\_

Document Path: T:\FSW\NFIN\Florida\Program\5100\Fire\GIS\Apalachicola\APRX\Burns\RX\B\RXB\_TEMPLATE.aprx  
 Age of Rough Last Updated: 5/29/2024