

# Prescribe Burn Map

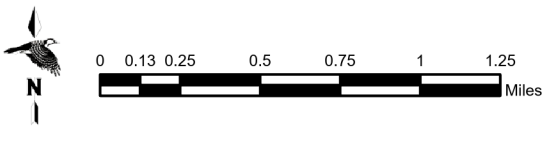
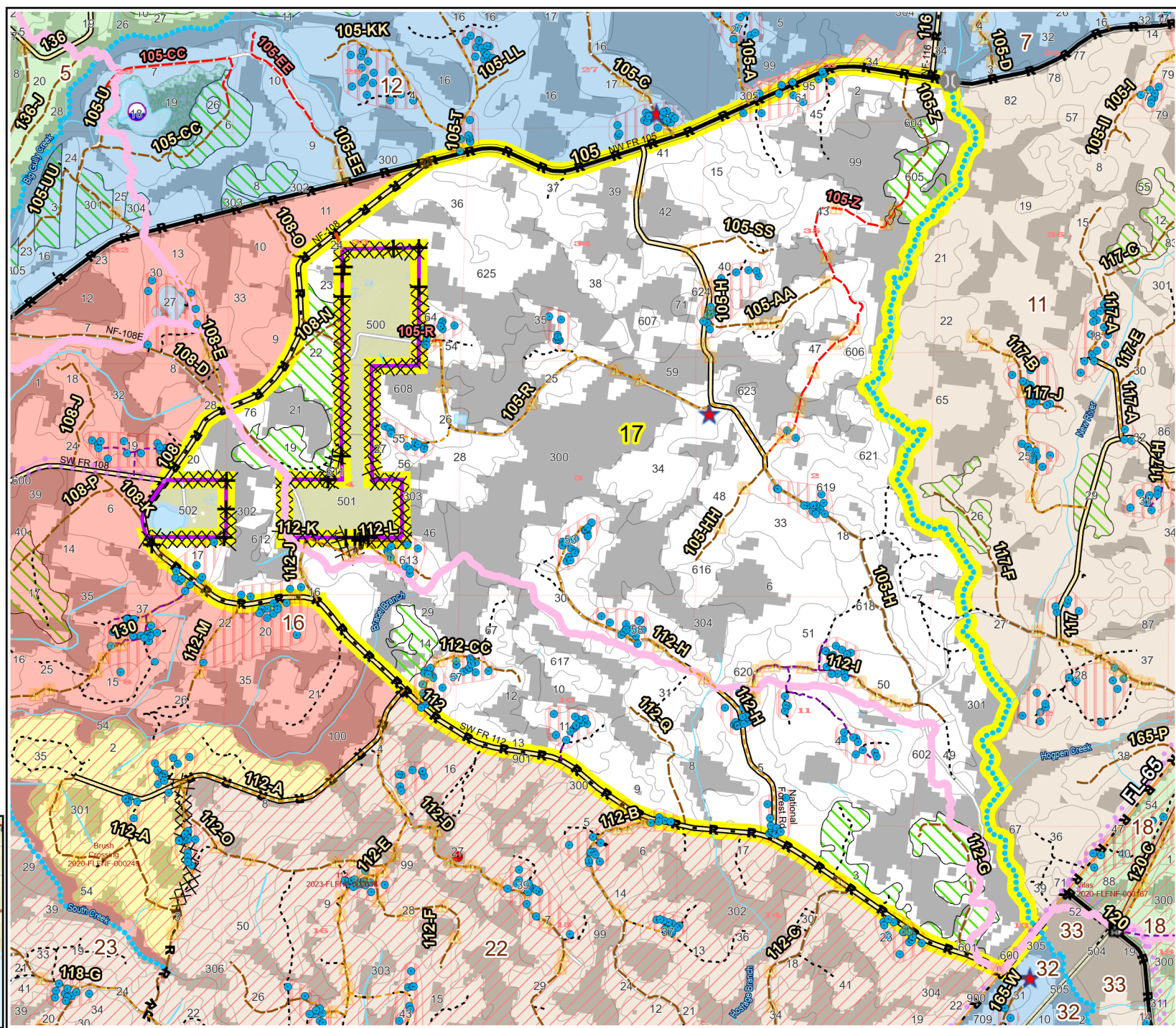
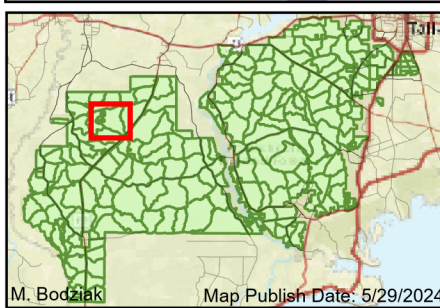
District: Apalachicola  
Apalachicola National Forest

## Burn Unit 17

5193 FACTS Reportable Acres  
3406 Burnable Acres  
Last Burned: 3/15/2023

- RCW Trees
- RCW Cluster
- ★ Apiary
- Road Erosion
- Trails
- + Fireline Tie In
- Control Line - Dozer
- Control Line - Road
- Boundary- Private
- Boundary - Natural Feature
- Unknown
- access by foot
- access by utv

Burn Unit Info	
<span style="border: 2px solid yellow; width: 20px; height: 10px; display: inline-block;"></span> Burn Unit	<b>Yrs. Last Burn</b>
<span style="background-color: gray; width: 20px; height: 10px; display: inline-block;"></span> Private	0 - 1
<span style="border: 1px dashed black; width: 20px; height: 10px; display: inline-block;"></span> USFS No Burn	> 1 - 2
<span style="background-color: yellow; width: 20px; height: 10px; display: inline-block;"></span> Burnable Area	> 2 - 3
<span style="background-color: gray; width: 20px; height: 10px; display: inline-block;"></span> Did not burn last 27 yrs	> 3 - 4
<span style="background-color: white; width: 20px; height: 10px; display: inline-block;"></span> Burned during last 27 yrs	> 4 - 5
	> 5 - 10
	> 10 - 15
	> 15 - 20
	> 20 - 25



BurnDate	Tr.Winds	Temp	Mix Ht.
RH	Disp. Index	Wind	KBDI
DSR	RX Position	Burn Boss	