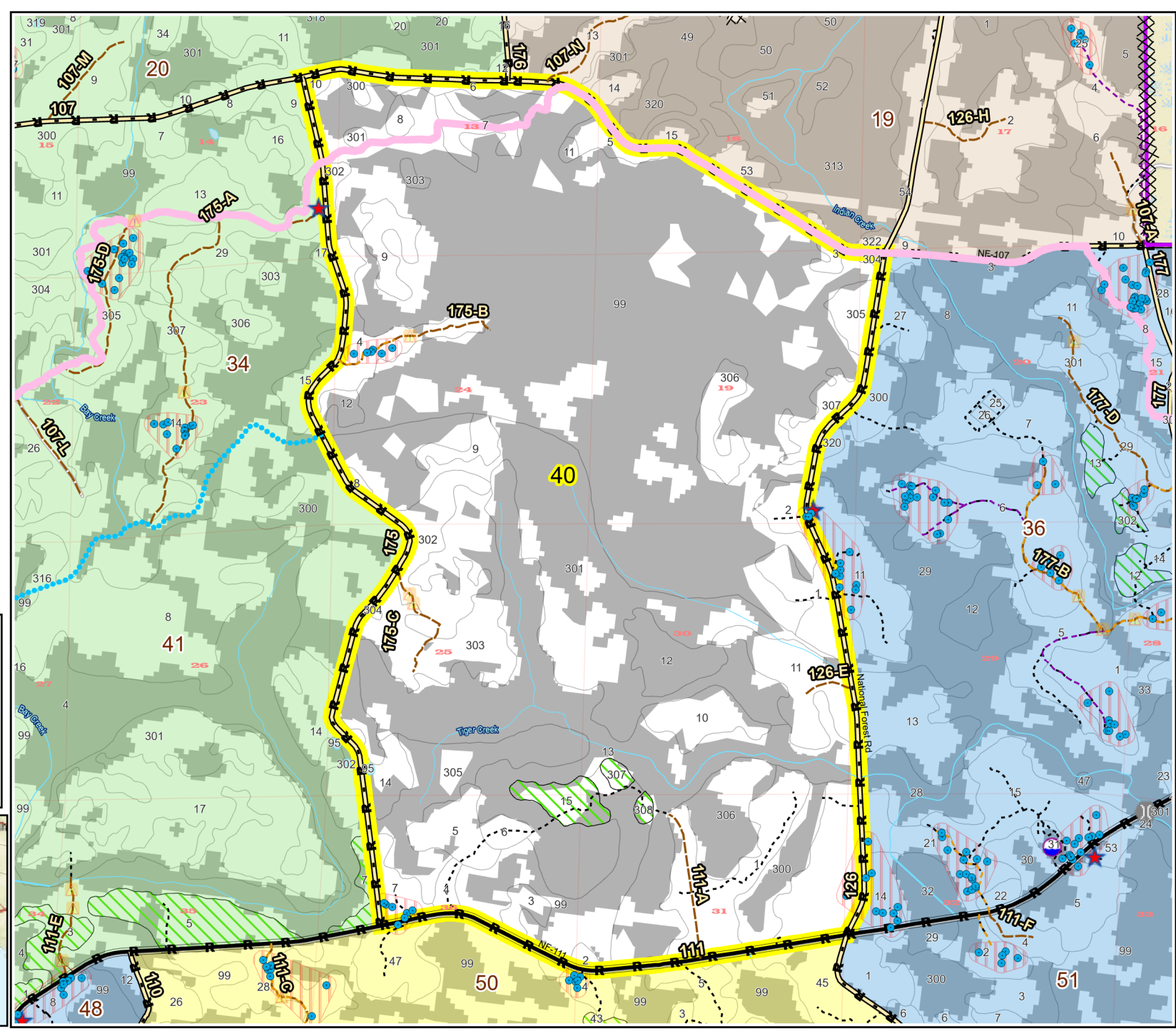
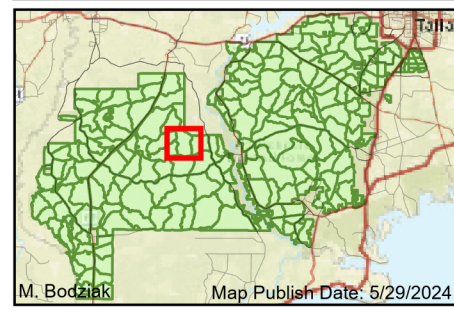


Prescribe Burn Map
 District: Apalachicola
 Apalachicola National Forest
Burn Unit 40
 3770 FACTS Reportable Acres
 1559 Burnable Acres
 Last Burned: 5/23/2024 3:17:00 PM

- RCW Trees
- RCW Cluster
- ★ Apiary
- R Road Erosion
- Trails
- Control Line - Road
- Boundary -
- ⋯ Natural Feature
- access by foot
- access by utv

Burn Unit Info		Yrs. Last Burn
	Burn Unit	0 - 1
	Private	> 1 - 2
	USFS No Burn	> 2 - 3
	Did not burn last 27 yrs	> 3 - 4
	Burned during last 27 yrs	> 4 - 5
		> 5 - 10
		> 10 - 15
		> 15 - 20
		> 20 - 25



0 0.13 0.25 0.5 0.75 1 1.25 Miles

BurnDate _____
 RH _____
 DSR _____

Tr.Winds _____
 Disp. Index _____
 RX Position _____

Temp _____
 Wind _____
 Burn Boss _____

Mix Ht. _____
 KBDI _____

Document Path: T:\FSW\NFIN\Florida\Program\5100\Fire\GIS\Apalachicola\APRX\Burns\RX\BXR\B_TEMPLATE.aprx
 Age of Rough Last Updated: 5/29/2024