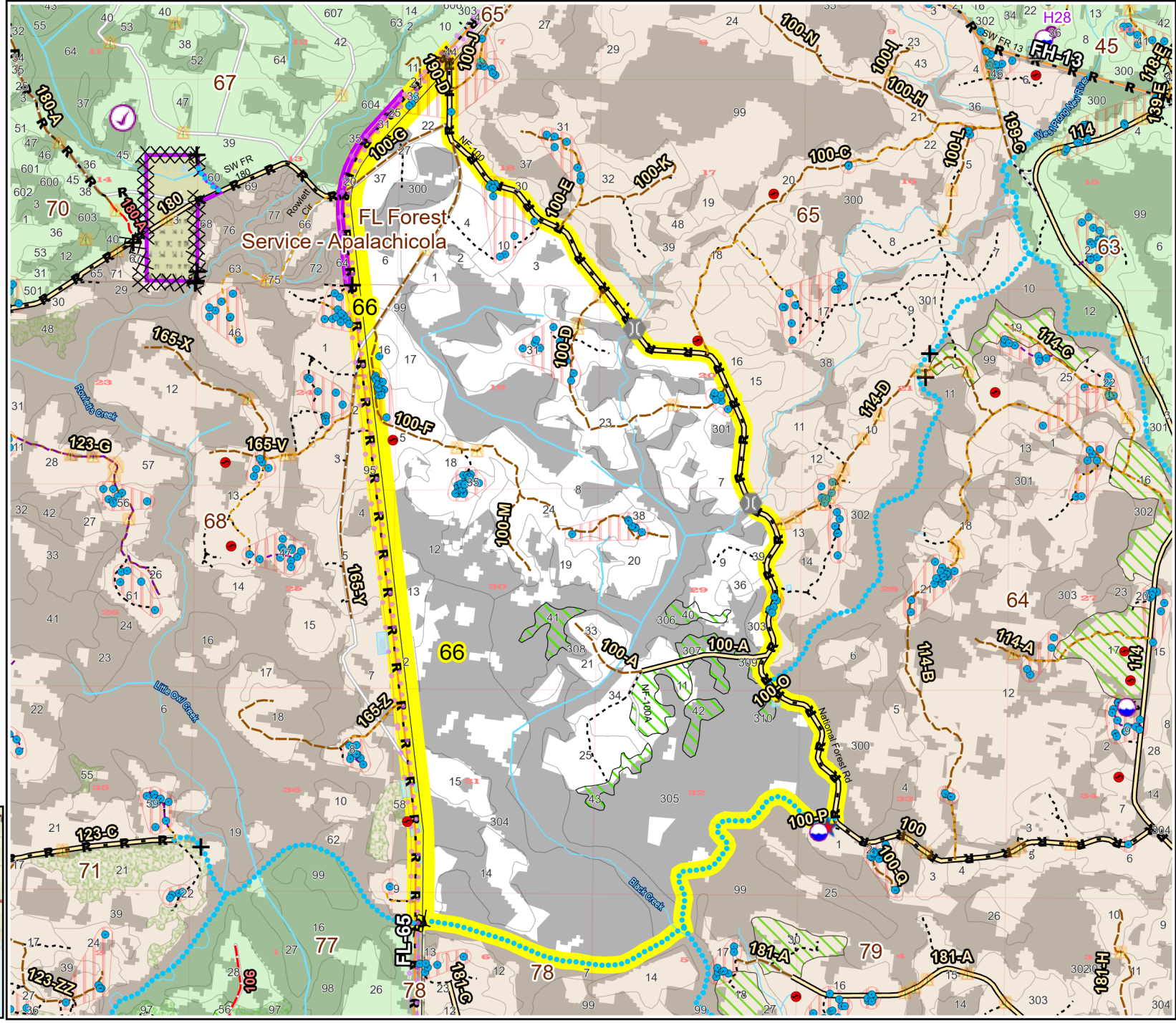
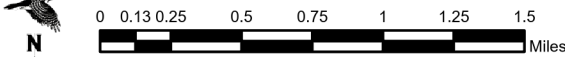
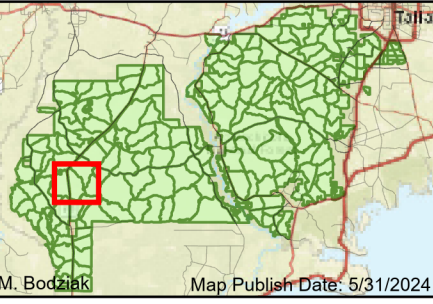


Prescribe Burn Map  
 District: Apalachicola  
 Apalachicola National Forest  
**Burn Unit 66**  
 4039 FACTS Reportable Acres  
 1889 Burnable Acres  
 Last Burned: 3/20/2024



- RCW Trees
- RCW Cluster
- Flatwood
- Salamander
- Potential Pond
- ★ Apiary
- Road Erosion
- + Fireline Tie In
- Control Line - Dozer
- Control Line - Road
- Boundary - Private
- Boundary - Feature
- Natural Feature
- access by foot
- access by utv

Burn Unit Info	Yrs. Last Burn
<span style="border: 2px solid yellow; padding: 2px;"> </span> Burn Unit	0 - 1
<span style="border: 2px solid grey; padding: 2px;"> </span> Private	> 1 - 2
<span style="border: 2px dashed black; padding: 2px;"> </span> USFS No Burn	> 2 - 3
<span style="background-color: grey; border: 1px solid black; padding: 2px;"> </span> Burnable Area	> 3 - 4
<span style="background-color: lightgrey; border: 1px solid black; padding: 2px;"> </span> Did not burn last 27 yrs	> 4 - 5
<span style="background-color: white; border: 1px solid black; padding: 2px;"> </span> Burned during last 27 yrs	> 5 - 10
	> 10 - 15
	> 15 - 20
	> 20 - 25



BurnDate	Tr.Winds	Temp	Mix Ht.
RH	Disp. Index	Wind	KBDI
DSR	RX Position	Burn Boss	