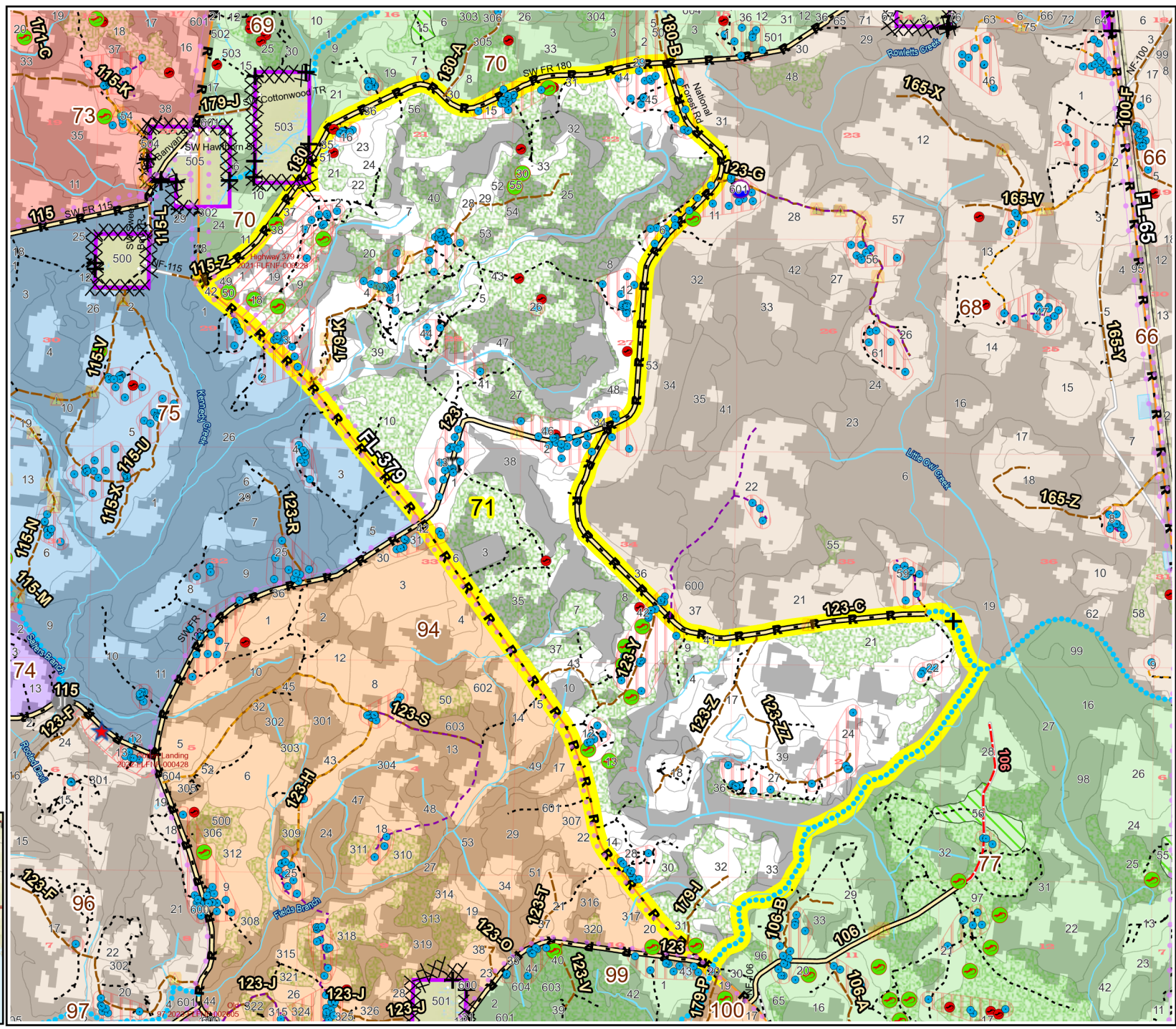


# Prescribe Burn Map

District: Apalachicola  
Apalachicola National Forest

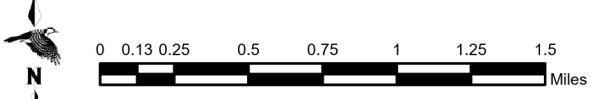
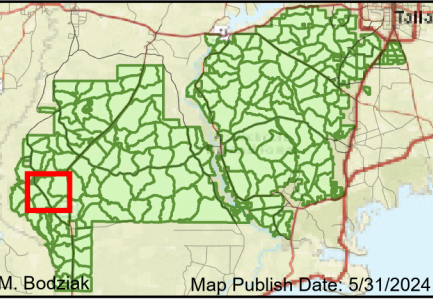
## Burn Unit 71

3651 FACTS Reportable Acres  
2293 Burnable Acres  
Last Burned: 5/16/2024 3:00:00 PM



- RCW Trees
- RCW Cluster
- Active FS Pond
- Flatwood Salamander
- Potential Pond
- ★ Apiary
- Road Erosion
- + Fireline Tie In
- Control Line - Dozer
- Control Line - Road
- Boundary - Private
- Boundary - Natural Feature
- access by foot
- access by utv

Burn Unit Info	
<span style="background-color: yellow; border: 1px solid black; width: 20px; height: 10px; display: inline-block;"></span> Burn Unit	<b>Yrs. Last Burn</b>
<span style="background-color: gray; border: 1px solid black; width: 20px; height: 10px; display: inline-block;"></span> Private	0 - 1
<span style="border: 1px dashed black; width: 20px; height: 10px; display: inline-block;"></span> USFS No Burn	> 1 - 2
<span style="background-color: lightblue; border: 1px solid black; width: 20px; height: 10px; display: inline-block;"></span> Burnable Area	> 2 - 3
<span style="background-color: lightyellow; border: 1px solid black; width: 20px; height: 10px; display: inline-block;"></span> Did not burn last 27 yrs	> 3 - 4
<span style="background-color: lightorange; border: 1px solid black; width: 20px; height: 10px; display: inline-block;"></span> Burned during last 27 yrs	> 4 - 5
<span style="background-color: lightred; border: 1px solid black; width: 20px; height: 10px; display: inline-block;"></span>	> 5 - 10
<span style="background-color: lightpurple; border: 1px solid black; width: 20px; height: 10px; display: inline-block;"></span>	> 10 - 15
<span style="background-color: lightblue; border: 1px solid black; width: 20px; height: 10px; display: inline-block;"></span>	> 15 - 20
<span style="background-color: lightgreen; border: 1px solid black; width: 20px; height: 10px; display: inline-block;"></span>	> 20 - 25



BurnDate	Tr.Winds	Temp	Mix Ht.
RH	Disp. Index	Wind	KBDI
DSR	RX Position	Burn Boss	