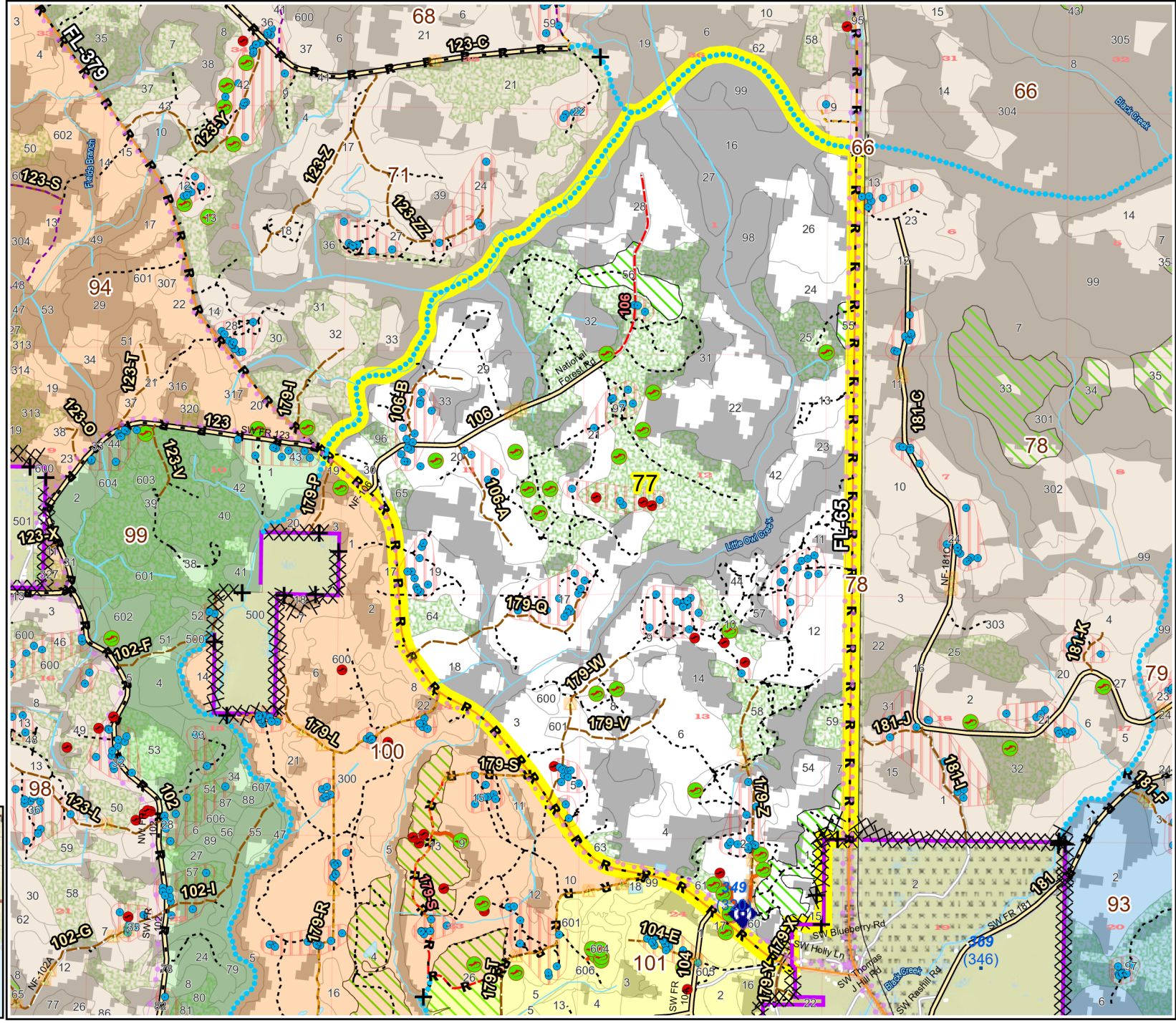


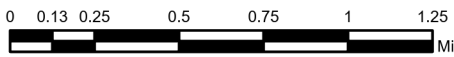
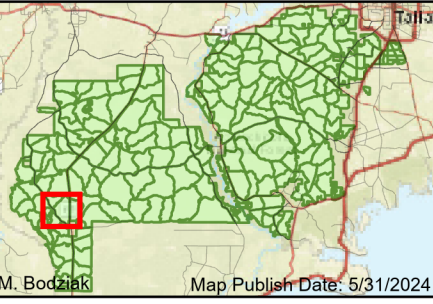
Prescribe Burn Map  
 District: Apalachicola  
 Apalachicola National Forest  
**Burn Unit 77**  
 3367 FACTS Reportable Acres  
 1998 Burnable Acres  
 Last Burned: 1/24/2023



- RCW Trees
- Active FS
- Pond
- Flatwood
- Salamander
- Potential Pond
- Road Erosion
- + Fireline Tie In
- X Control Line - Dozer
- R Control Line - Road
- Boundary - Private
- Boundary - Natural
- Unknown
- access by foot
- access by utv

**Burn Unit Info**

	Yrs. Last Burn
<span style="color: yellow;">---</span> Burn Unit	0 - 1
<span style="color: grey;">---</span> Private	> 1 - 2
<span style="color: black;">X</span> USFS No Burn	> 2 - 3
<span style="color: grey;">---</span> Did not burn last 27 yrs	> 3 - 4
<span style="color: white;">---</span> Burned during last 27 yrs	> 4 - 5
	> 5 - 10
	> 10 - 15
	> 15 - 20
	> 20 - 25



BurnDate \_\_\_\_\_ Tr.Winds \_\_\_\_\_ Temp \_\_\_\_\_ Mix.Ht. \_\_\_\_\_  
 RH \_\_\_\_\_ Disp. Index \_\_\_\_\_ Wind \_\_\_\_\_ KBDI \_\_\_\_\_  
 DSR \_\_\_\_\_ RX Position \_\_\_\_\_ Burn Boss \_\_\_\_\_