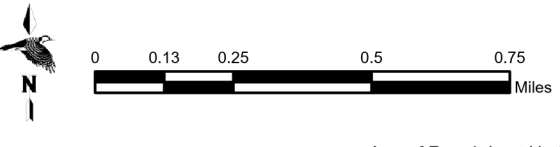
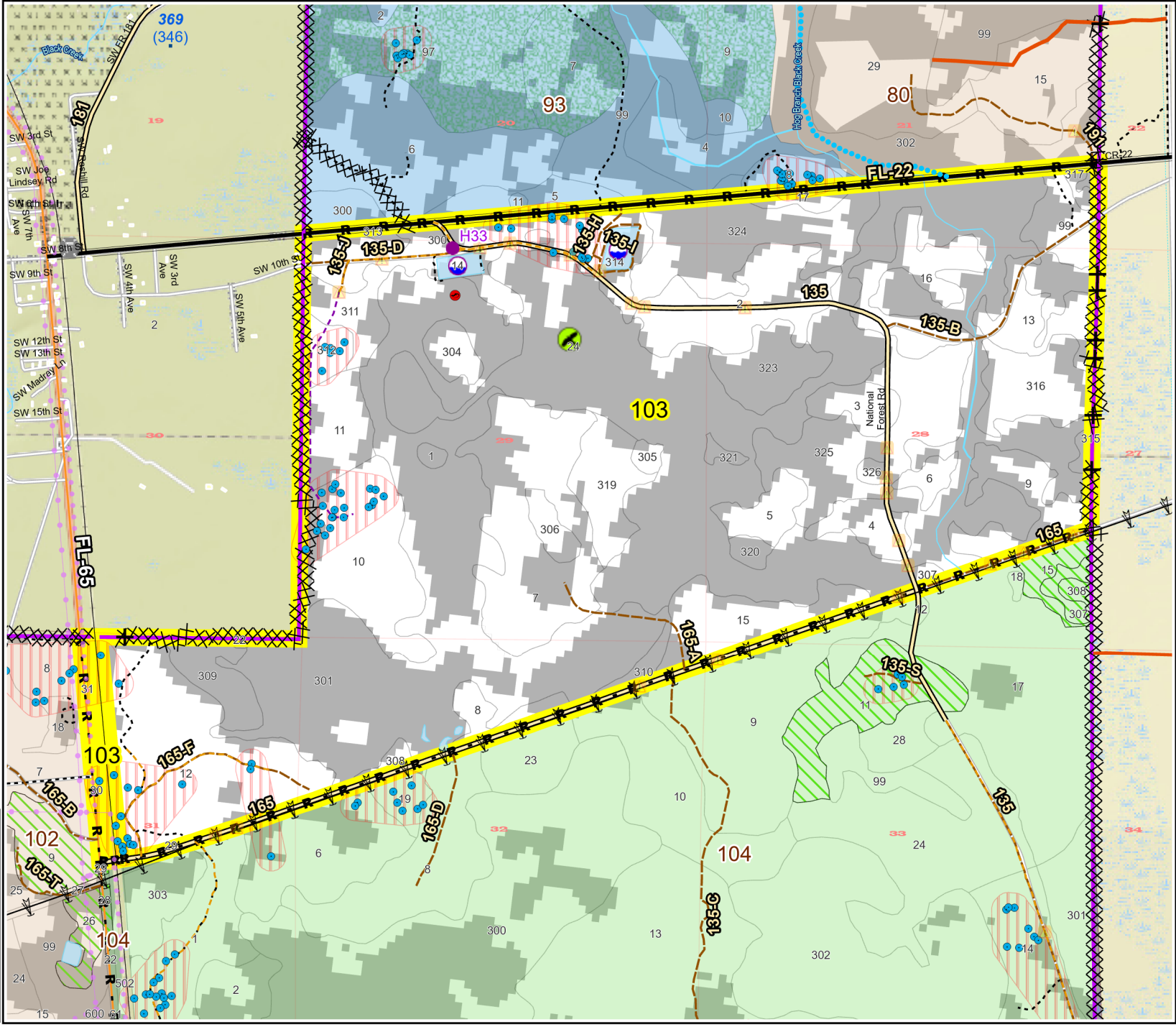
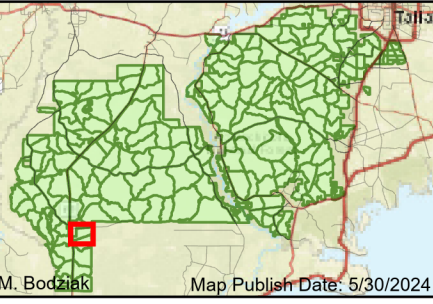


Prescribe Burn Map  
 District: Apalachicola  
 Apalachicola National Forest  
**Burn Unit 103**  
 1668 FACTS Reportable Acres  
 742 Burnable Acres  
 Last Burned: 2/11/2022

- RCW Trees
- RCW Cluster
- Flatwood
- Salamander
- Potential Pond
- Eagles
- Road Erosion
- Power
- Transmission Line
- Fireline Tie In
- Control Line - Dozer
- Control Line - Road
- Boundary - Private
- Boundary - Natural Feature
- access by foot
- access by utv

Burn Unit Info	
<span style="border: 2px solid yellow; width: 20px; height: 10px; display: inline-block;"></span> Burn Unit	Yrs. Last Burn
<span style="background-color: gray; width: 20px; height: 10px; display: inline-block;"></span> Private	0 - 1
<span style="border: 1px dashed black; width: 20px; height: 10px; display: inline-block;"></span> USFS No Burn	> 1 - 2
<span style="background-color: lightgray; width: 20px; height: 10px; display: inline-block;"></span> Burnable Area	> 2 - 3
<span style="background-color: white; width: 20px; height: 10px; display: inline-block;"></span> Did not burn last 27 yrs	> 3 - 4
<span style="background-color: lightgray; width: 20px; height: 10px; display: inline-block;"></span> Burned during last 27 yrs	> 4 - 5
	> 5 - 10
	> 10 - 15
	> 15 - 20
	> 20 - 25



BurnDate \_\_\_\_\_ Tr.Winds \_\_\_\_\_ Temp \_\_\_\_\_ Mix Ht. \_\_\_\_\_  
 RH \_\_\_\_\_ Disp. Index \_\_\_\_\_ Wind \_\_\_\_\_ KBDI \_\_\_\_\_  
 DSR \_\_\_\_\_ RX Position \_\_\_\_\_ Burn Boss \_\_\_\_\_