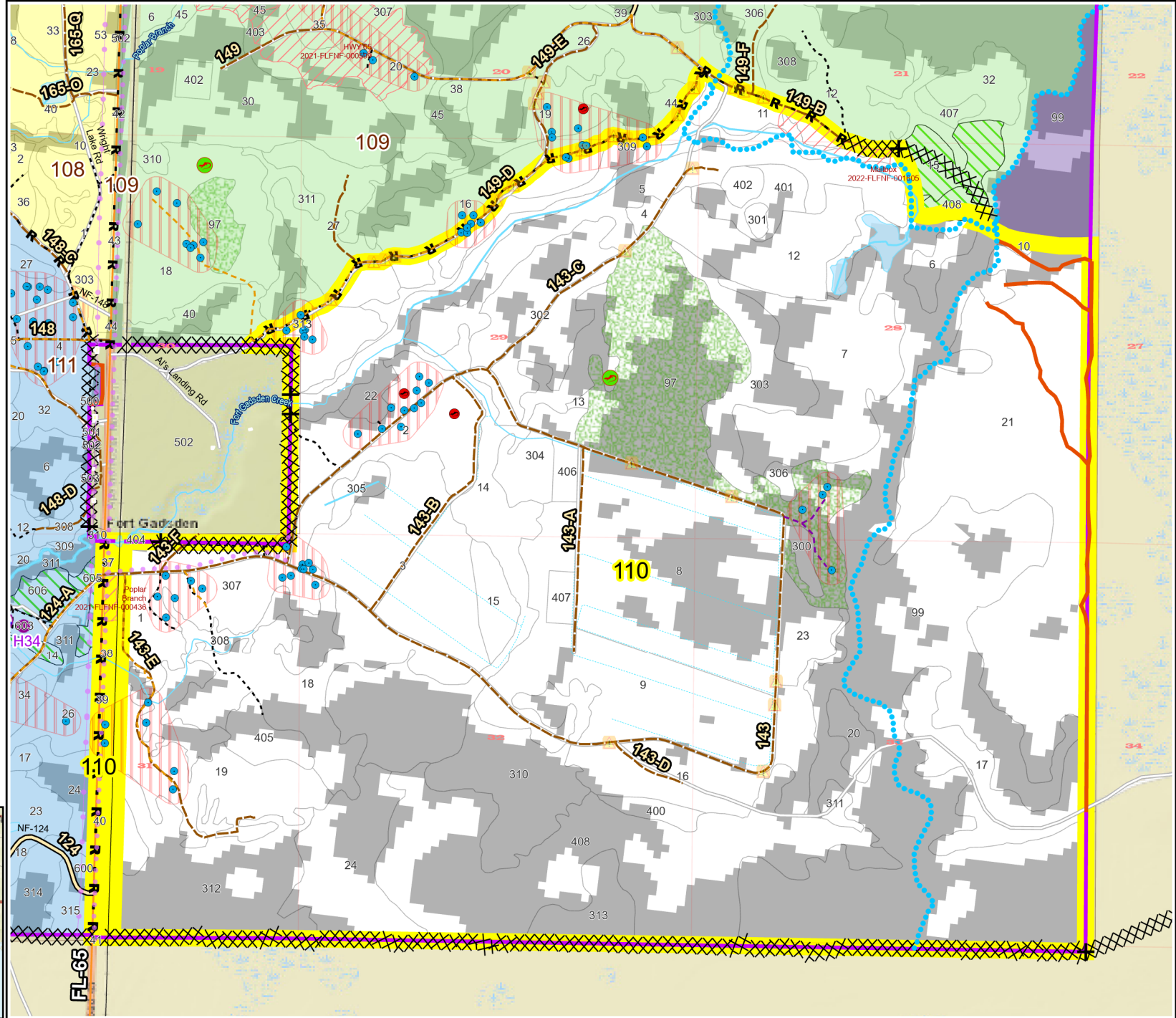


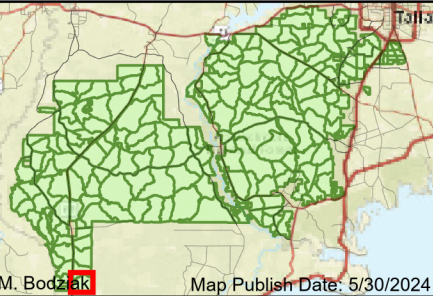
Prescribe Burn Map
 District: Apalachicola
 Apalachicola National Forest
Burn Unit 110
 2763 FACTS Reportable Acres
 1758 Burnable Acres
 Last Burned: 2/21/2023



- RCW Trees
- RCW Cluster
- Active FS Pond
- Salamander Potential Pond
- Road Erosion
- + Fireline Tie In
- Control Line - Dozer
- R** Control Line - Road Boundary - Private
- Boundary - Natural Feature
- Unknown
- access by foot
- access by utv

Burn Unit Info

	Yrs. Last Burn
 Burn Unit	0 - 1
 Private	> 1 - 2
 USFS No Burn	> 2 - 3
 Burnable Area	> 3 - 4
 Did not burn last 27 yrs	> 4 - 5
 Burned during last 27 yrs	> 5 - 10
	> 10 - 15
	> 15 - 20
	> 20 - 25



0 0.13 0.25 0.5 0.75 Miles

BurnDate _____

RH _____

DSR _____

Tr.Winds _____

Disp. Index _____

RX Position _____

Temp _____

Wind _____

Burn Boss _____

Mix Ht. _____

KBDI _____

Document Path: T:\FS\NFIN\Florida\Program\5100\Fire\GIS\Apalachicola\APRX\RXBurns\RXB\RXB_TEMPLATE.aprx
 Age of Rough Last Updated: 5/29/2024