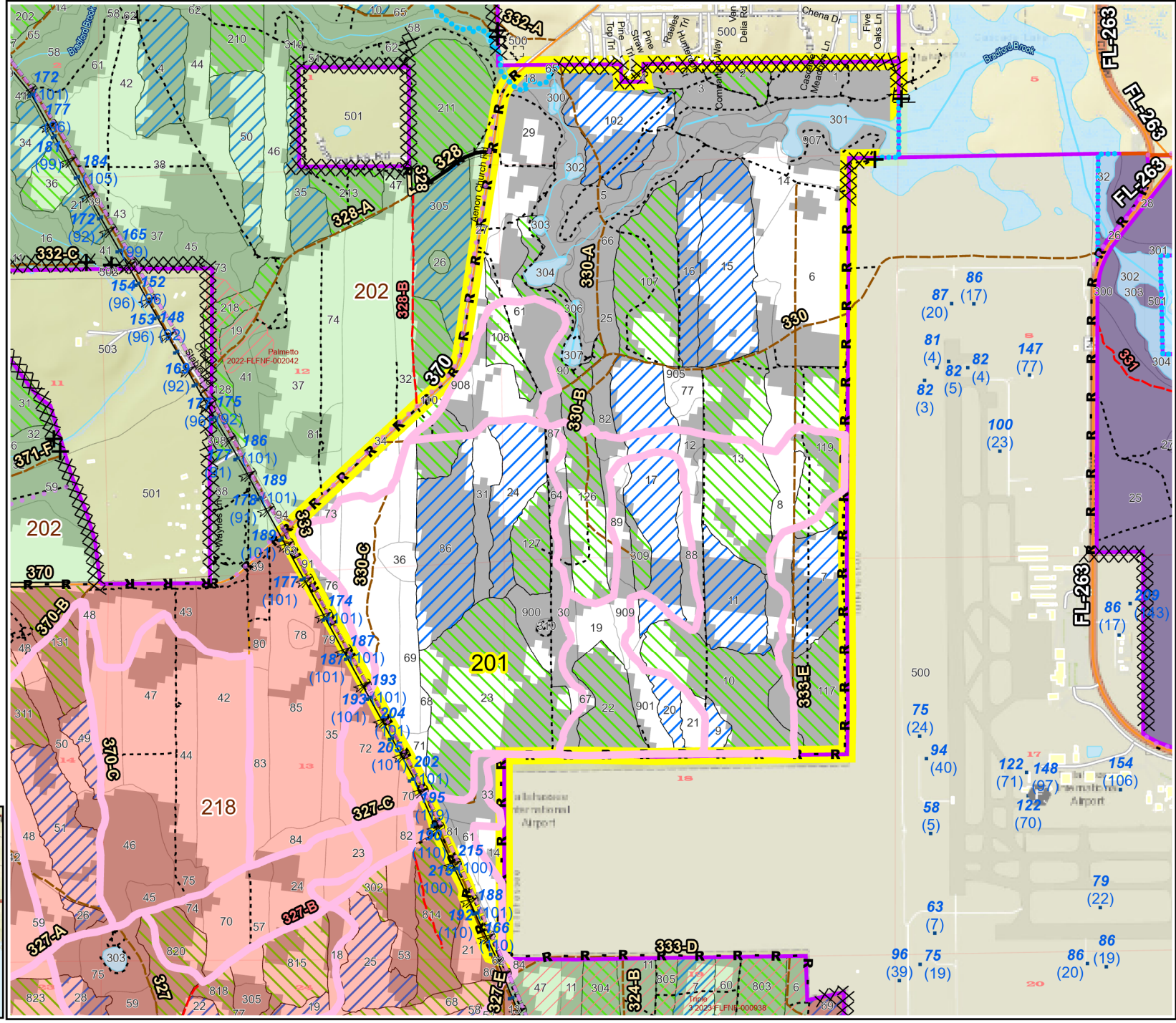
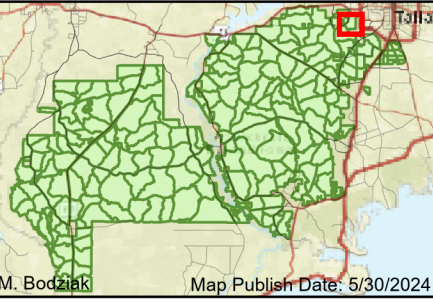


Prescribe Burn Map
 District: Wakulla
 Apalachicola National Forest
Burn Unit 201
 1293 FACTS Reportable Acres
 536 Burnable Acres
 Last Burned: 1/11/2022



- RCW Trees
- Road Erosion
- Trails
- Power
- Transmission Line
- Fireline Tie In
- Control Line - Dozer
- Control Line - Road
- Boundary - Private
- Boundary - Natural Feature
- Natural Feature
- access by utv

Burn Unit Info	
 Burn Unit	Yrs. Last Burn
 Private	0 - 1
 USFS No Burn	> 1 - 2
 Burnable Area	> 2 - 3
 Did not burn last 27 yrs	> 3 - 4
 Burned during last 27 yrs	> 4 - 5
	> 5 - 10
	> 10 - 15
	> 15 - 20
	> 20 - 25



0 0.13 0.25 0.5 0.75 Miles

BurnDate _____
 RH _____
 DSR _____

Tr.Winds _____
 Disp. Index _____
 RX Position _____

Temp _____
 Wind _____
 Burn Boss _____

Mix Ht. _____
 KBDI _____

Document Path: T:\FS\NFS\FinFlorida\Program\5100\Fire\GIS\Apalachicola\APRX\Burns\RX\B\RXB_TEMPLATE.aprx
 Age of Rough Last Updated: 5/29/2024