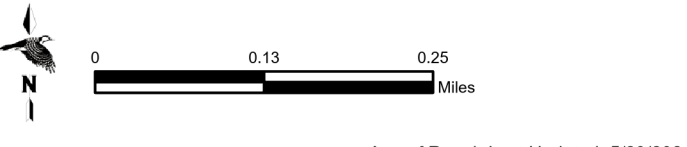
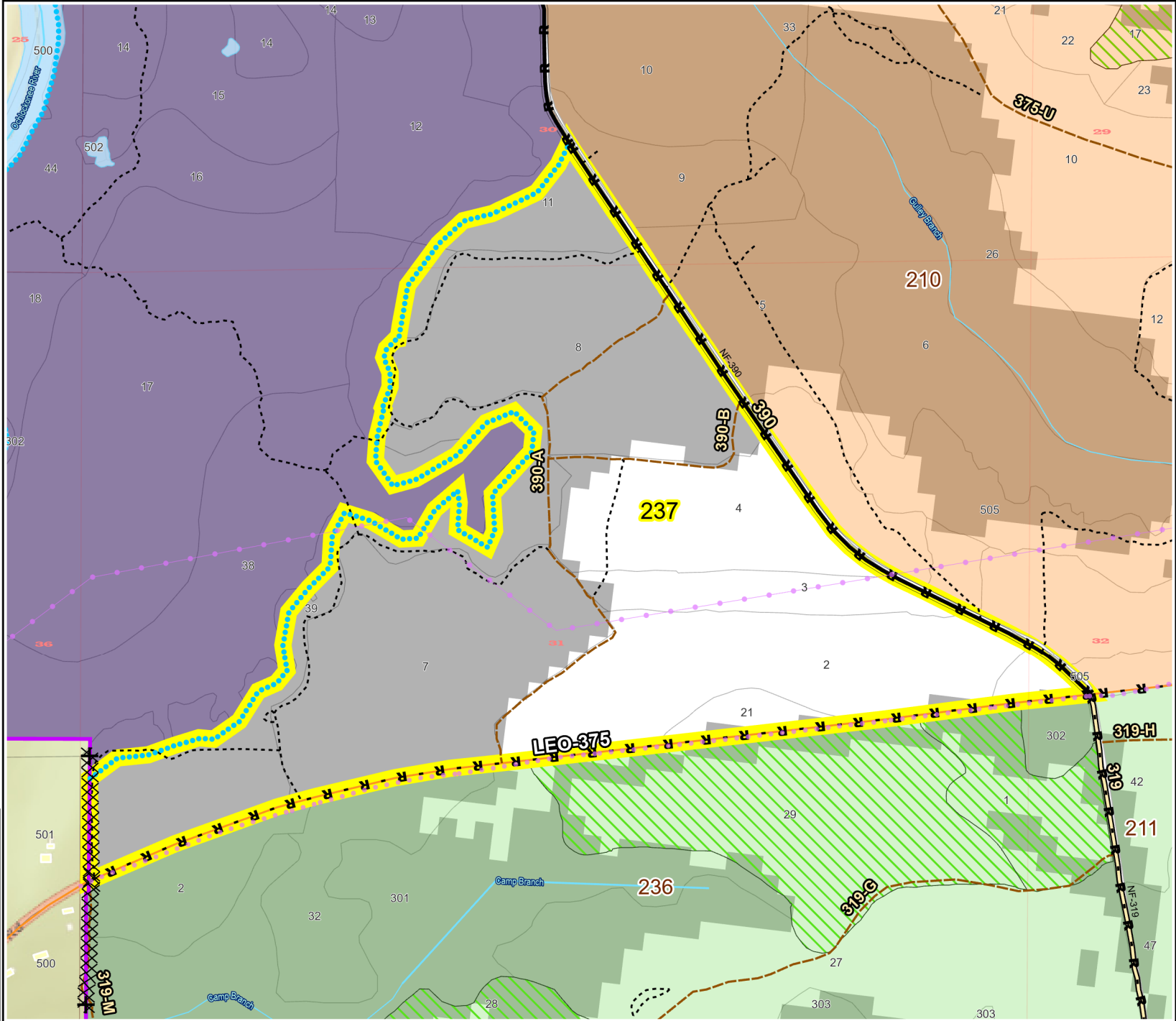
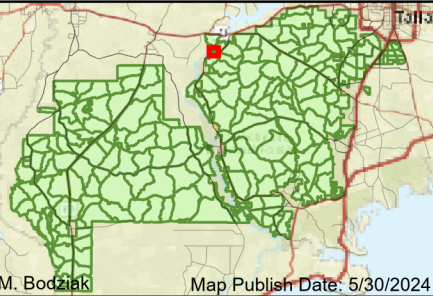


Prescribe Burn Map  
 District: Wakulla  
 Apalachicola National Forest  
**Burn Unit 237**  
 180 FACTS Reportable Acres  
 67 Burnable Acres  
 Last Burned: 12/15/2021

- RCW Trees
- Road Erosion
- Control Line - Dozer
- Control Line - Road
- Boundary - Private
- Boundary -
- Natural Feature

Burn Unit Info		Yrs. Last Burn	
<span style="border: 2px solid yellow; width: 20px; height: 10px; display: inline-block;"></span> Burn Unit			0 - 1
<span style="background-color: gray; width: 20px; height: 10px; display: inline-block;"></span> Private			> 1 - 2
<span style="border: 1px dashed black; width: 20px; height: 10px; display: inline-block;"></span> USFS No Burn			> 2 - 3
<b>Burnable Area</b>			> 3 - 4
<span style="background-color: gray; width: 20px; height: 10px; display: inline-block;"></span> Did not burn last 27 yrs			> 4 - 5
<span style="background-color: white; width: 20px; height: 10px; display: inline-block;"></span> Burned during last 27 yrs			> 5 - 10
			> 10 - 15
			> 15 - 20
			> 20 - 25



BurnDate _____	Tr.Winds _____	Temp _____	Mix Ht. _____
RH _____	Disp. Index _____	Wind _____	KBDI _____
DSR _____	RX Position _____	Burn Boss _____	