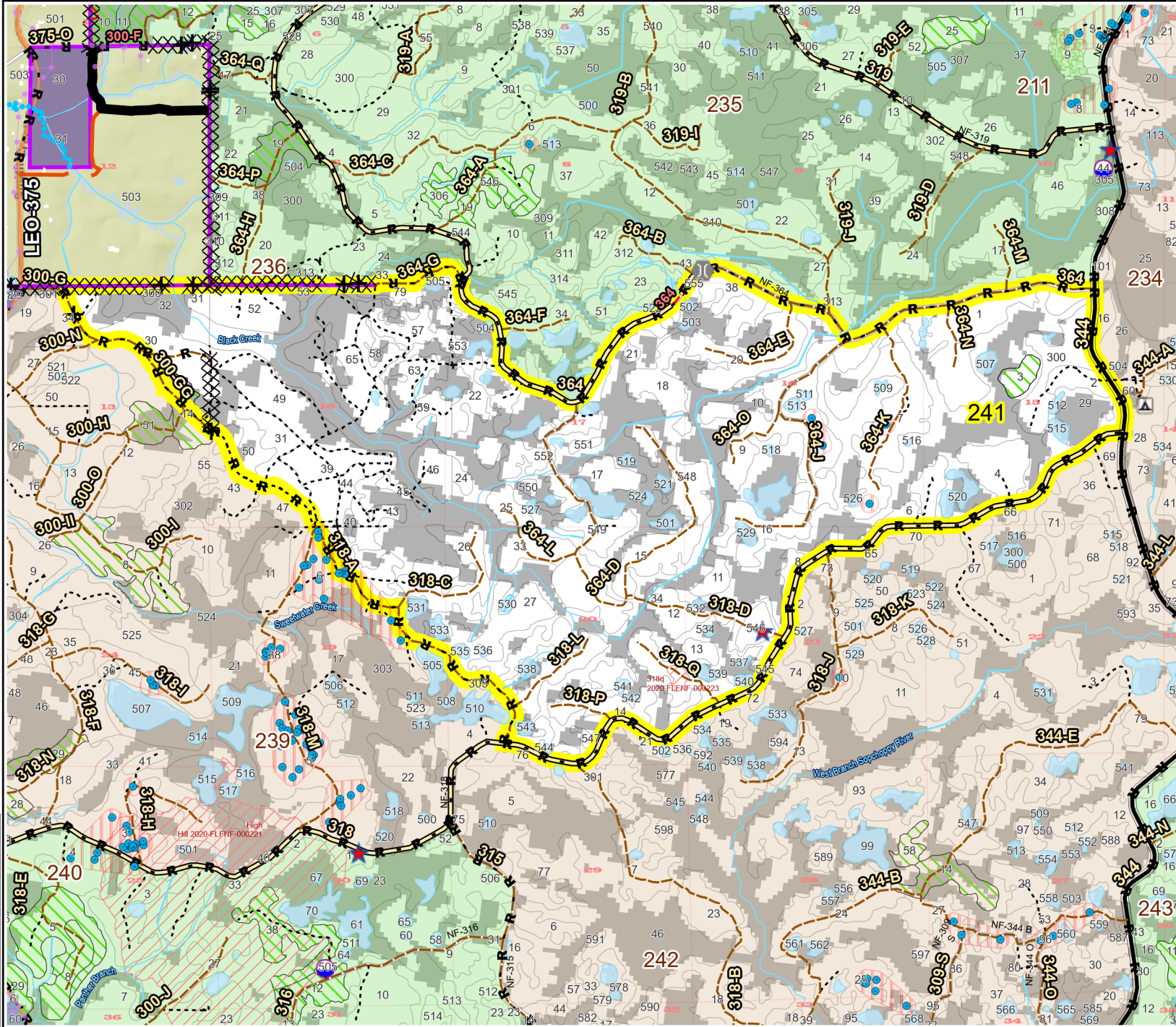
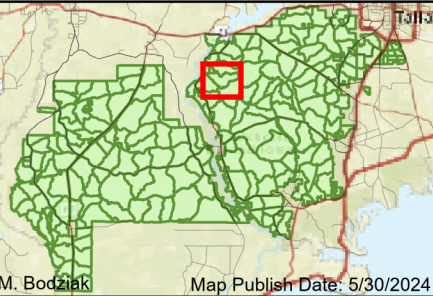


Prescribe Burn Map  
 District: Wakulla  
 Apalachicola National Forest  
**Burn Unit 241**  
 3108 FACTS Reportable Acres  
 2096 Burnable Acres  
 Last Burned: 2/2/2024

- RCW Trees
- ▨ RCW Cluster
- ★ Apiary
- ⊠ Road Erosion
- ⊕ Fireline Tie In
- ⊗ Control Line - Dozer
- R Control Line - Road
- ▬ Boundary- Private

Burn Unit Info		Yrs. Last Burn
▬ Burn Unit		0 - 1
▬ Private		> 1 - 2
⊗ USFS No Burn		> 2 - 3
█ Burnable Area		> 3 - 4
▬ Did not burn last 27 yrs		> 4 - 5
▬ Burned during last 27 yrs		> 5 - 10
		> 10 - 15
		> 15 - 20
		> 20 - 25



0 0.13 0.25 0.5 0.75 1 1.25 Miles

BurnDate	Tr.Winds	Temp	Mix Ht.
RH	Disp. Index	Wind	KBDI
DSR	RX Position	Burn Boss	

Document Path: T:\FS\NFS\Fin\Florida\Program\5100\Fire\GIS\Apalachicola\APRX\BURNS\RXB\RXB\_TEMPLATE.aprx  
 Age of Rough Last Updated: 5/29/2024