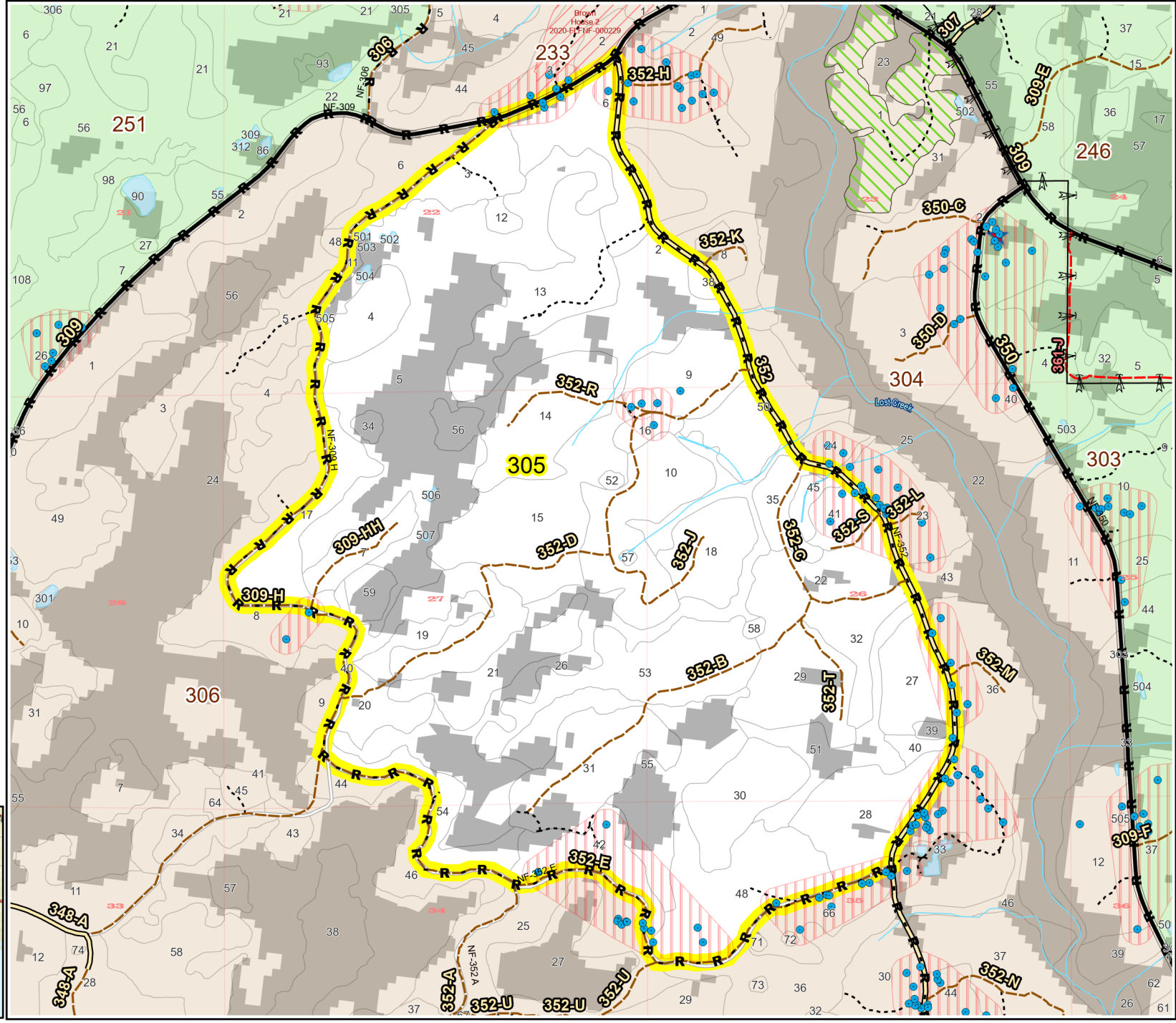
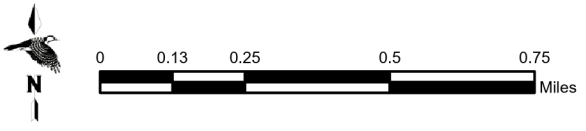
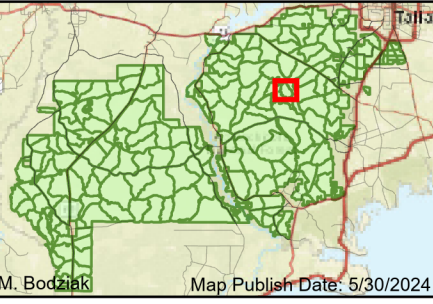


Prescribe Burn Map  
 District: Wakulla  
 Apalachicola National Forest  
**Burn Unit 305**  
 1387 FACTS Reportable Acres  
 1151 Burnable Acres  
 Last Burned: 5/2/2024



- RCW Trees
- RCW Cluster
- ★ Apiary
- Road Erosion
- R** Control Line - Road

Burn Unit Info		Yrs. Last Burn	
<span style="border: 2px solid yellow; width: 15px; height: 10px; display: inline-block;"></span> Burn Unit		0 - 1	
<span style="background-color: gray; width: 15px; height: 10px; display: inline-block;"></span> Private		> 1 - 2	
<span style="border: 1px dashed gray; width: 15px; height: 10px; display: inline-block;"></span> USFS No Burn		> 2 - 3	
<b>Burnable Area</b>		> 3 - 4	
<span style="background-color: gray; width: 15px; height: 10px; display: inline-block;"></span> Did not burn last 27 yrs		> 4 - 5	
<span style="background-color: white; width: 15px; height: 10px; display: inline-block;"></span> Burned during last 27 yrs		> 5 - 10	
		> 10 - 15	
		> 15 - 20	
		> 20 - 25	



BurnDate _____	Tr.Winds _____	Temp _____	Mix Ht. _____
RH _____	Disp. Index _____	Wind _____	KBDI _____
DSR _____	RX Position _____	Burn Boss _____	