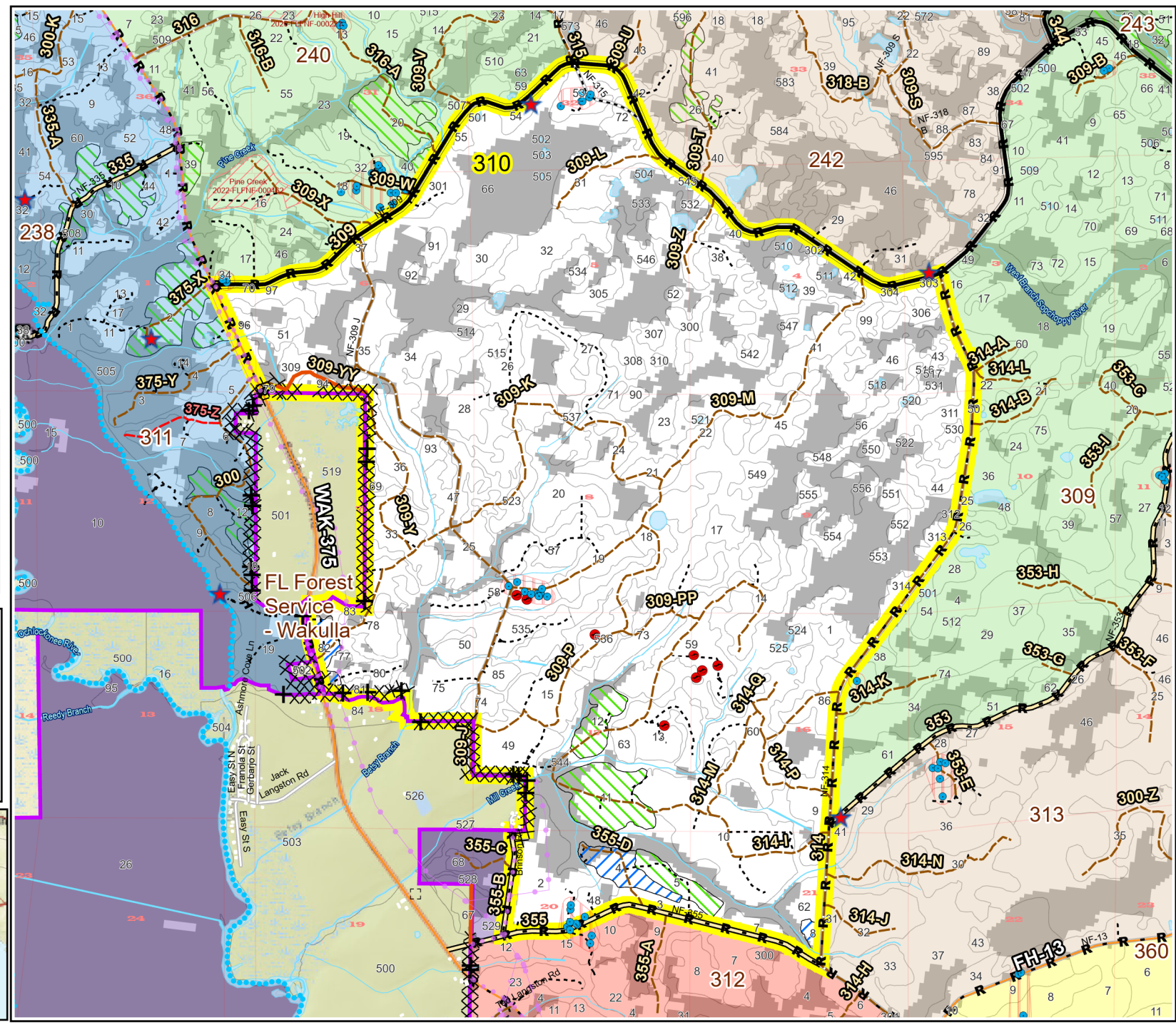
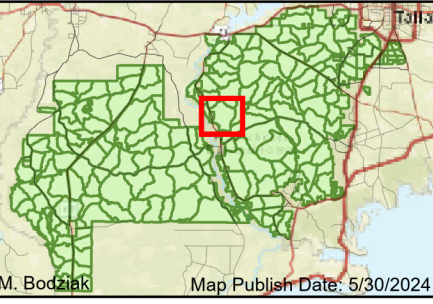


Prescribe Burn Map
 District: Wakulla
 Apalachicola National Forest
Burn Unit 310
 5368 FACTS Reportable Acres
 4042 Burnable Acres
 Last Burned: 2/24/2024

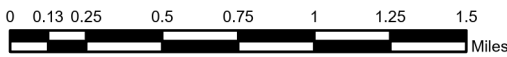


- RCW Trees
- Salamander
- ★ Apiary
- Road Erosion
- + Fireline Tie In
- Control Line - Dozer
- Control Line - Road
- Boundary - Private
- Unknown
- RCW Cluster
- Flatwood
- Potential Pond

| Burn Unit Info | |
|--|----------------|
| Burn Unit | Yrs. Last Burn |
| Private | 0 - 1 |
| USFS No Burn | > 1 - 2 |
| Burnable Area | > 2 - 3 |
| Did not burn last 27 yrs | > 3 - 4 |
| Burned during last 27 yrs | > 4 - 5 |
| | > 5 - 10 |
| | > 10 - 15 |
| | > 15 - 20 |
| | > 20 - 25 |



M. Bodziak Map Publish Date: 5/30/2024



| | | | |
|----------|-------------|-----------|---------|
| BurnDate | Tr.Winds | Temp | Mix Ht. |
| RH | Disp. Index | Wind | KBDI |
| DSR | RX Position | Burn Boss | |