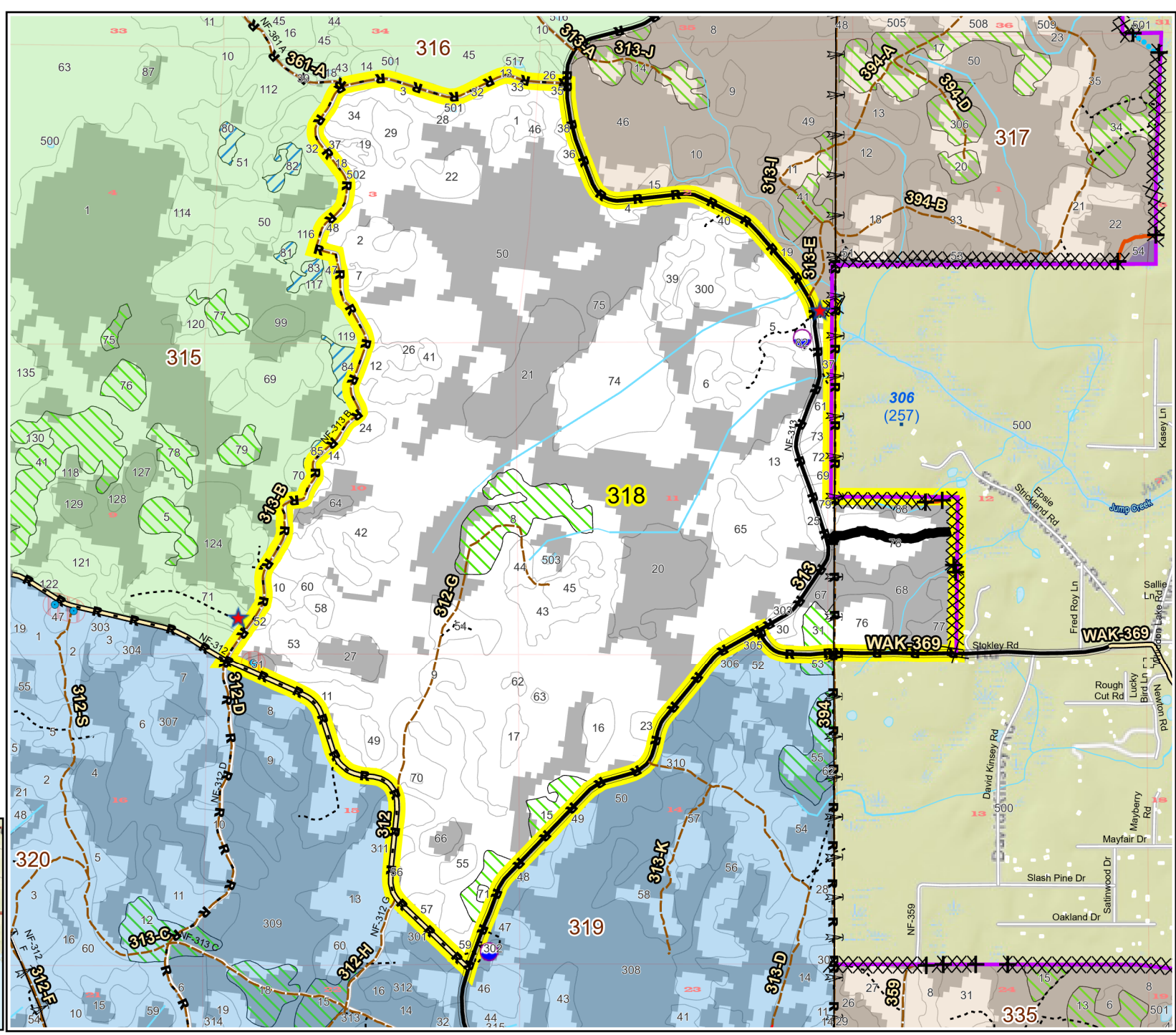
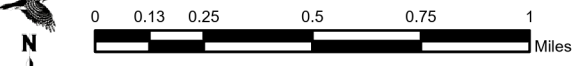
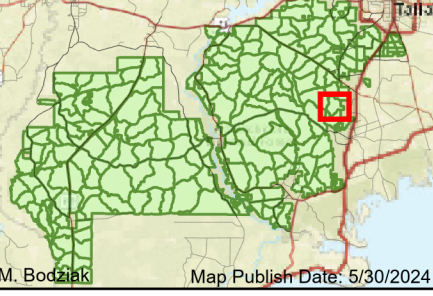


Prescribe Burn Map  
 District: Wakulla  
 Apalachicola National Forest  
**Burn Unit 318**  
 2266 FACTS Reportable Acres  
 1542 Burnable Acres  
 Last Burned: 3/30/2023



- RCW Trees
- RCW Cluster
- ★ Apiary
- Road Erosion
- Power
- Transmission Line
- + Fireline Tie In
- Control Line - Dozer
- Control Line - Road
- Access Line - UTV
- Boundary - Private
- Unknown

Burn Unit Info	
<span style="border: 2px solid yellow; padding: 2px;"> </span> Burn Unit	Yrs. Last Burn
<span style="background-color: gray; padding: 2px;"> </span> Private	0 - 1
<span style="border: 1px dashed black; padding: 2px;"> </span> USFS No Burn	> 1 - 2
<span style="background-color: lightgray; padding: 2px;"> </span> Did not burn last 27 yrs	> 2 - 3
<span style="background-color: white; padding: 2px;"> </span> Burned during last 27 yrs	> 3 - 4
	> 4 - 5
	> 5 - 10
	> 10 - 15
	> 15 - 20
	> 20 - 25



BurnDate	Tr.Winds	Temp	Mix Ht.
RH	Disp. Index	Wind	KBDI
DSR	RX Position	Burn Boss	