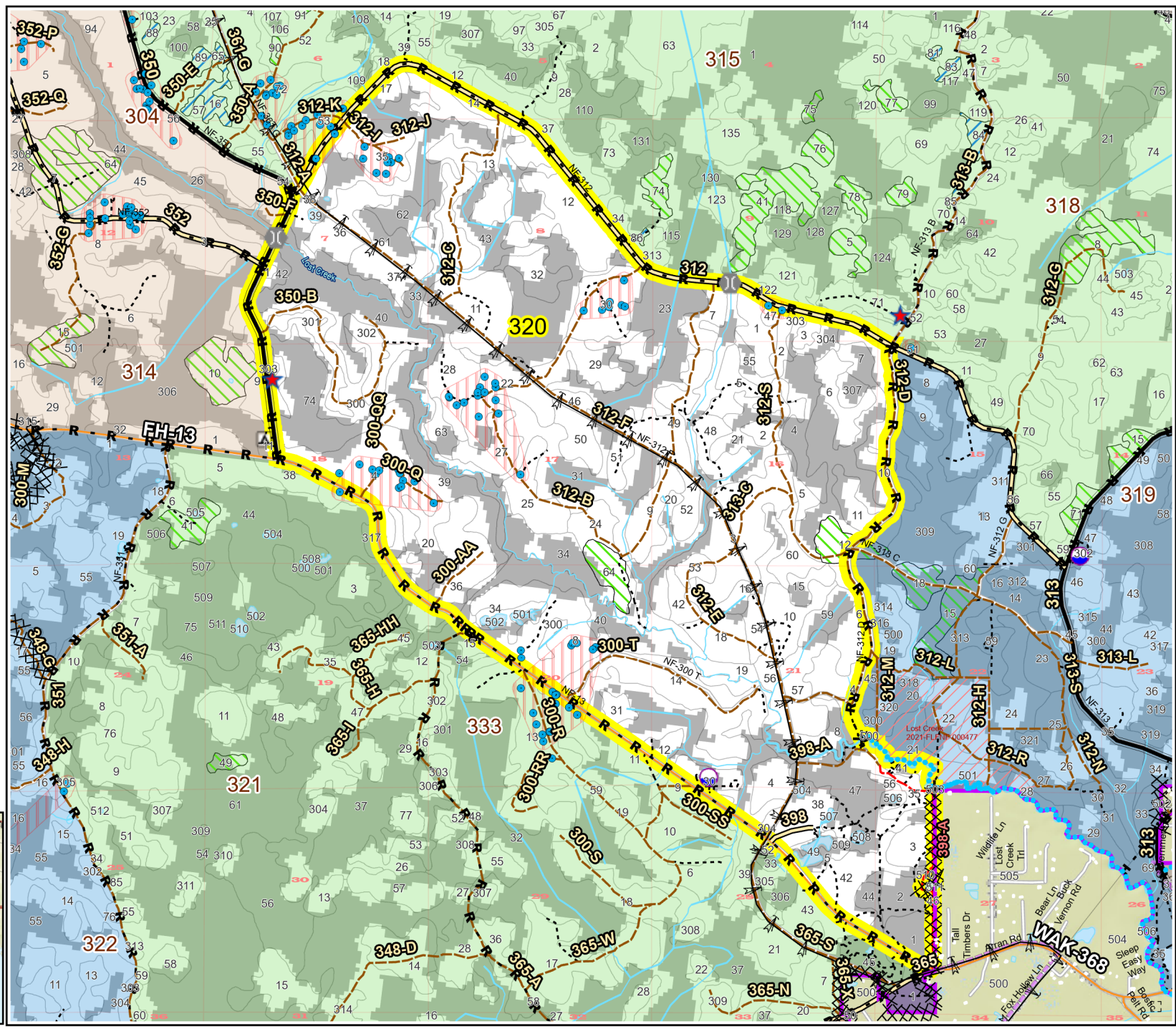
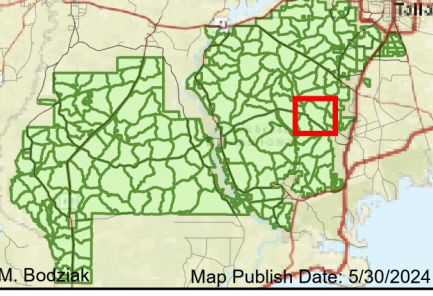


Prescribe Burn Map  
 District: Wakulla  
 Apalachicola National Forest  
**Burn Unit 320**  
 4004 FACTS Reportable Acres  
 2619 Burnable Acres  
 Last Burned: 4/20/2022

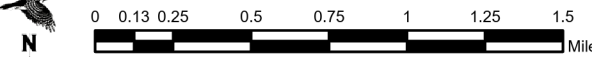


- RCW Trees
- RCW Cluster
- ★ Apiary
- Road Erosion
- Power
- Transmission Line
- + Fireline Tie In
- Control Line - Dozer
- Control Line - Road
- Boundary - Private
- Boundary - Natural Feature

Burn Unit Info	
<span style="background-color: yellow; border: 1px solid black; width: 20px; height: 10px; display: inline-block;"></span> Burn Unit	Yrs. Last Burn
<span style="background-color: grey; border: 1px solid black; width: 20px; height: 10px; display: inline-block;"></span> Private	0 - 1
<span style="border: 1px dashed black; width: 20px; height: 10px; display: inline-block;"></span> USFS No Burn	> 1 - 2
<span style="background-color: lightgrey; border: 1px solid black; width: 20px; height: 10px; display: inline-block;"></span> Burnable Area	> 2 - 3
<span style="background-color: lightgrey; border: 1px solid black; width: 20px; height: 10px; display: inline-block;"></span> Did not burn last 27 yrs	> 3 - 4
<span style="background-color: lightgrey; border: 1px solid black; width: 20px; height: 10px; display: inline-block;"></span> Burned during last 27 yrs	> 4 - 5
	> 5 - 10
	> 10 - 15
	> 15 - 20
	> 20 - 25



M. Bodziak Map Publish Date: 5/30/2024



BurnDate	Tr.Winds	Temp	Mix Ht.
RH	Disp. Index	Wind	KBDI
DSR	RX Position	Burn Boss	