

# Prescribe Burn Map

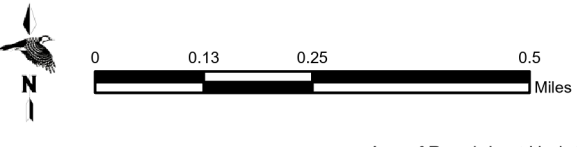
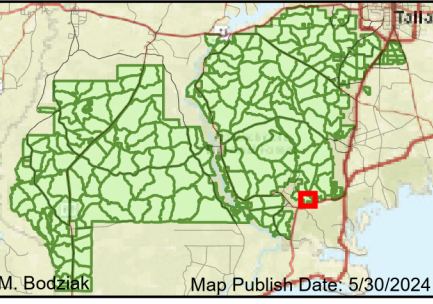
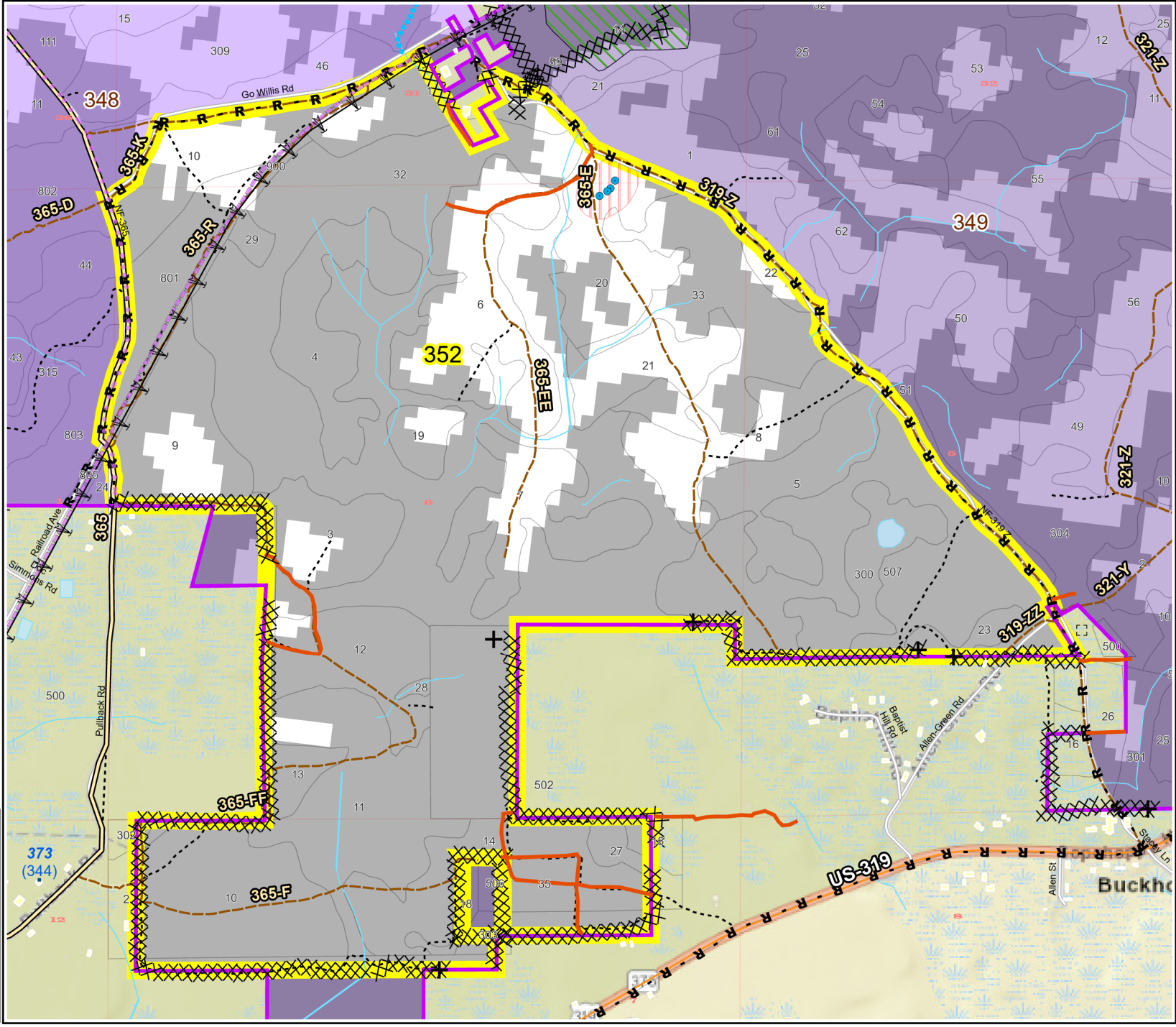
District: Wakulla  
Apalachicola National Forest

## Burn Unit 352

803 FACTS Reportable Acres  
151 Burnable Acres  
Last Burned: 2/6/2001

- RCW Trees
- RCW Cluster
- Road Erosion
- Power
- Transmission Line
- Fireline Tie In
- Control Line - Dozer
- Control Line - Road
- Boundary - Private
- Unknown

Burn Unit Info		Yrs. Last Burn
<span style="border: 2px solid yellow; width: 15px; height: 10px; display: inline-block;"></span> Burn Unit		0 - 1
<span style="background-color: gray; width: 15px; height: 10px; display: inline-block;"></span> Private		> 1 - 2
<span style="border: 1px dashed black; width: 15px; height: 10px; display: inline-block;"></span> USFS No Burn		> 2 - 3
<span style="background-color: lightgray; width: 15px; height: 10px; display: inline-block;"></span> Burnable Area		> 3 - 4
<span style="background-color: white; width: 15px; height: 10px; display: inline-block;"></span> Did not burn last 27 yrs		> 4 - 5
<span style="background-color: lightgray; width: 15px; height: 10px; display: inline-block;"></span> Burned during last 27 yrs		> 5 - 10
		> 10 - 15
		> 15 - 20
		> 20 - 25



BurnDate _____	Tr.Winds _____	Temp _____	Mix Ht. _____
RH _____	Disp. Index _____	Wind _____	KBDI _____
DSR _____	RX Position _____	Burn Boss _____	