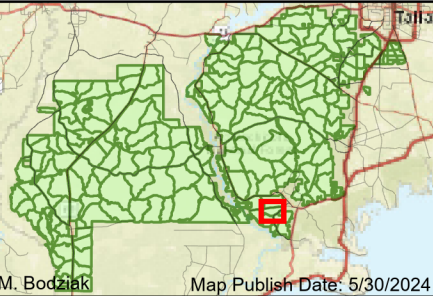


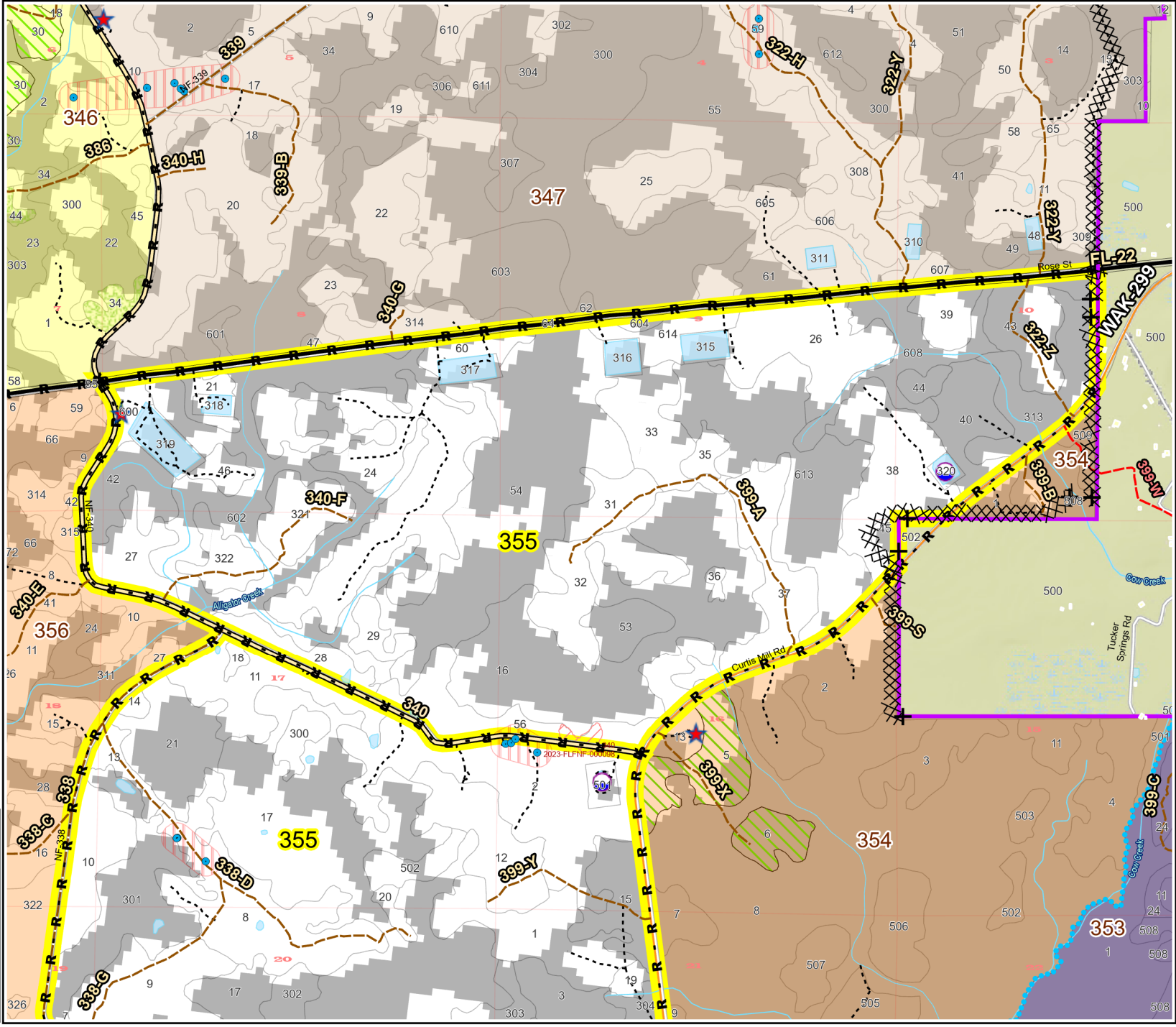
Prescribe Burn Map  
 District: Wakulla  
 Apalachicola National Forest  
**Burn Unit 355**  
 1280 FACTS Reportable Acres  
 0 Burnable Acres  
 Last Burned: 2/27/2024

- RCW Trees
- RCW Cluster
- ★ Apiary
- Road Erosion
- + Fireline Tie In
- Control Line - Dozer
- Control Line - Road
- Boundary- Private

Burn Unit Info		Yrs. Last Burn
<span style="border: 1px solid yellow; width: 20px; height: 10px; display: inline-block;"></span> Burn Unit		0 - 1
<span style="background-color: gray; width: 20px; height: 10px; display: inline-block;"></span> Private		> 1 - 2
<span style="border: 1px dashed black; width: 20px; height: 10px; display: inline-block;"></span> USFS No Burn		> 2 - 3
<span style="background-color: lightgray; width: 20px; height: 10px; display: inline-block;"></span> Burnable Area		> 3 - 4
<span style="background-color: lightgray; width: 20px; height: 10px; display: inline-block;"></span> Did not burn last 27 yrs		> 4 - 5
<span style="background-color: white; width: 20px; height: 10px; display: inline-block;"></span> Burned during last 27 yrs		> 5 - 10
		> 10 - 15
		> 15 - 20
		> 20 - 25



M. Bodziak Map Publish Date: 5/30/2024



BurnDate \_\_\_\_\_ Tr.Winds \_\_\_\_\_ Temp \_\_\_\_\_ Mix Ht. \_\_\_\_\_  
 RH \_\_\_\_\_ Disp. Index \_\_\_\_\_ Wind \_\_\_\_\_ KBDI \_\_\_\_\_  
 DSR \_\_\_\_\_ RX Position \_\_\_\_\_ Burn Boss \_\_\_\_\_