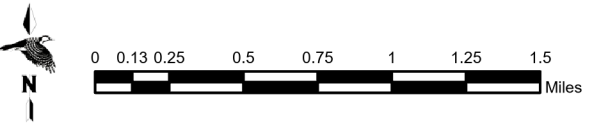
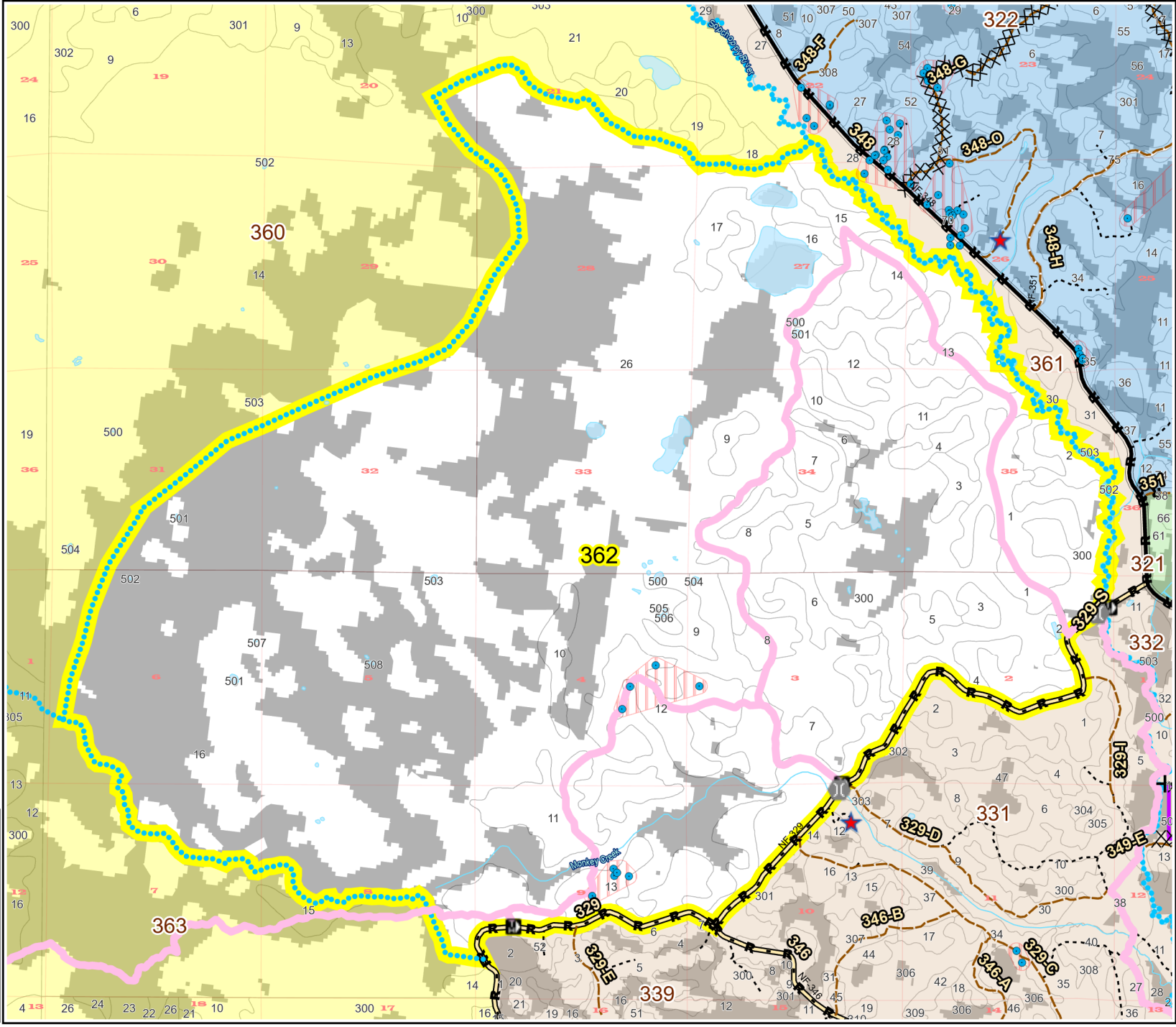
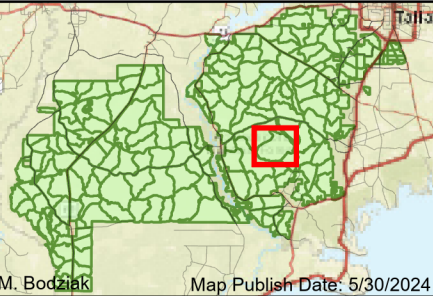


Prescribe Burn Map  
 District: Wakulla  
 Apalachicola National Forest  
**Burn Unit 362**  
 7815 FACTS Reportable Acres  
 5348 Burnable Acres  
 Last Burned: 4/7/2021

- RCW Trees
- RCW Cluster
- ★ Apiary
- Road Erosion
- Trails
- Control Line - Road
- Boundary -
- ⋯ Natural Feature

Burn Unit Info		Yrs. Last Burn
<span style="border: 2px solid yellow; width: 20px; height: 10px; display: inline-block;"></span>	Burn Unit	0 - 1
<span style="background-color: gray; width: 20px; height: 10px; display: inline-block;"></span>	Private	> 1 - 2
<span style="border: 1px dashed black; width: 20px; height: 10px; display: inline-block;"></span>	USFS No Burn	> 2 - 3
<span style="background-color: lightgray; width: 20px; height: 10px; display: inline-block;"></span>	Did not burn last 27 yrs	> 3 - 4
<span style="background-color: white; width: 20px; height: 10px; display: inline-block;"></span>	Burned during last 27 yrs	> 4 - 5
		> 5 - 10
		> 10 - 15
		> 15 - 20
		> 20 - 25



BurnDate \_\_\_\_\_ Tr.Winds \_\_\_\_\_ Temp \_\_\_\_\_ Mix Ht. \_\_\_\_\_  
 RH \_\_\_\_\_ Disp. Index \_\_\_\_\_ Wind \_\_\_\_\_ KBDI \_\_\_\_\_  
 DSR \_\_\_\_\_ RX Position \_\_\_\_\_ Burn Boss \_\_\_\_\_