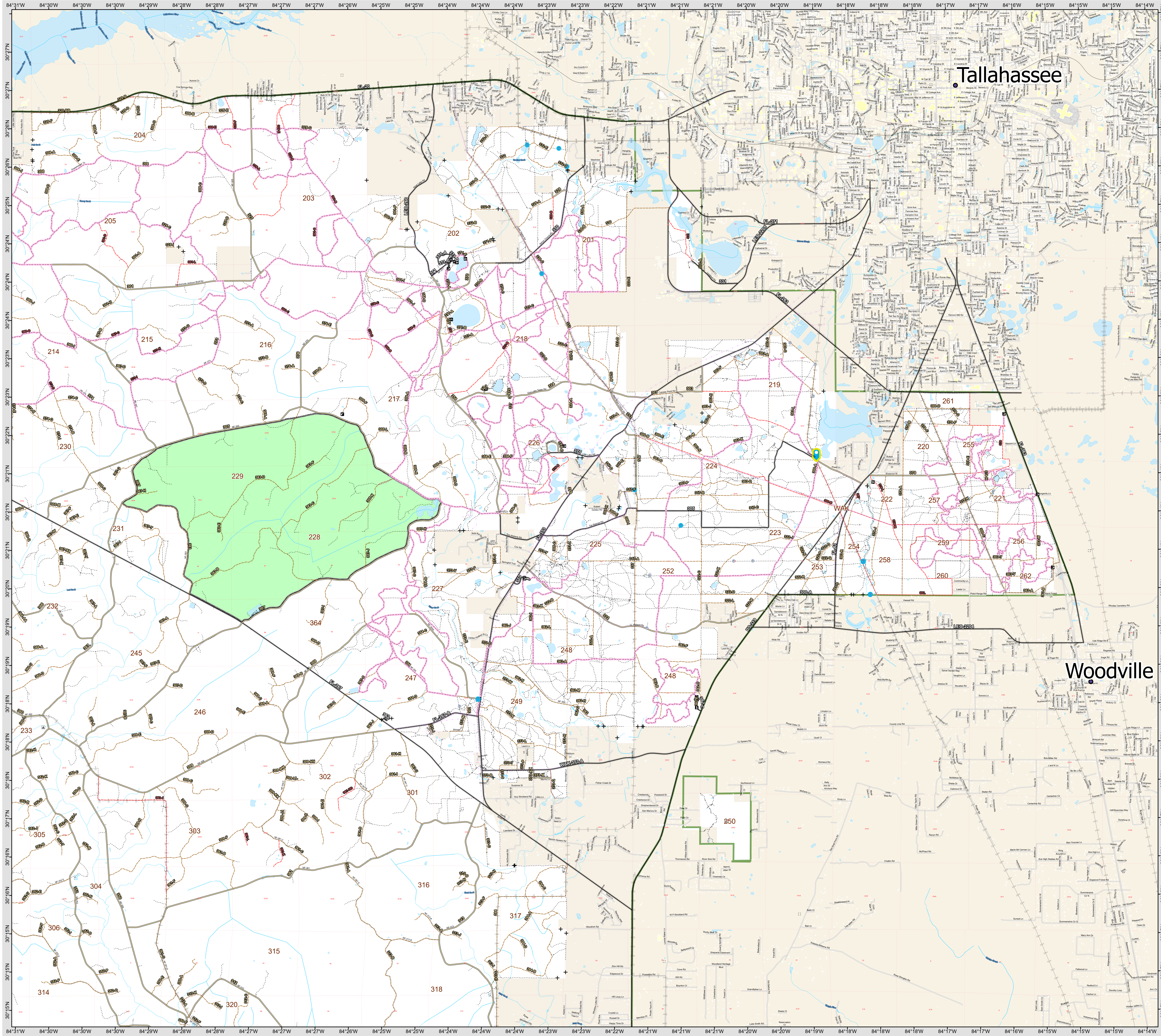
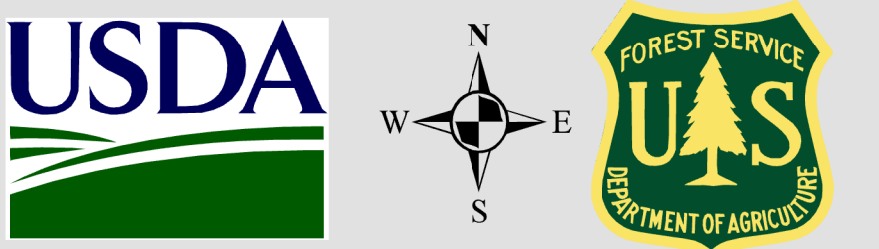


Apalachicola National Forest Forest Clean Up Leon County



Legend

- USFS Land Ownership
- USFS Road System
- Local Roads Hierarchy
- Streams
- Waterbody

USFS Land Ownership

- USFS National Forest Boundary
- USFS National Forest
- USFS National Forest
- USFS National Forest

USFS Road System

- USFS Road System
- USFS Road System
- USFS Road System
- USFS Road System

Local Roads Hierarchy

- Local Roads Hierarchy
- Local Roads Hierarchy
- Local Roads Hierarchy
- Local Roads Hierarchy

Streams

- Streams
- Streams
- Streams
- Streams

Waterbody

- Waterbody
- Waterbody
- Waterbody
- Waterbody

0 0.45 0.9 1.8 Miles

This map was produced by the US Forest Service on 2/23/2024.

This product is reproduced from geospatial information prepared by the U.S. Department of Agriculture, Forest Service. GIS data and product accuracy may vary. They may be developed from sources of differing accuracy, accurate only at certain scales, based on modeling or interpretation, incomplete while being created or revised, etc. Using GIS products for purposes other than those for which they were created may yield inaccurate or misleading results. The Forest Service reserves the right to correct, update, modify, or replace GIS products without notification.

For more information, contact: Apalachicola National Forest (850) 926-3561, 57 Taft Drive, Crawfordville, FL 32327.

Data Projection: NAD_1983_StatePlane_Florida_North_FIPS_0903_Feet