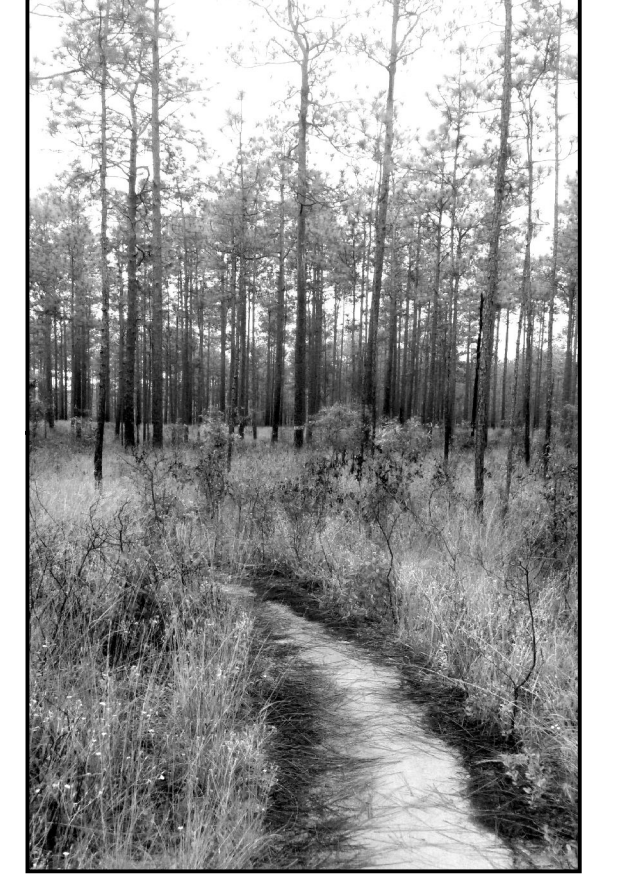


Motor Vehicle Use Map

Apalachicola National Forest



America's Great Outdoors

Florida Forest Service 2024
United States Department of Agriculture

VICINITY MAP



INFORMATION SOURCES

Apalachicola Ranger District
11152 NW State Route 20
Bristol, FL 32311
(850) 643-2282

OR
Wakulla Ranger District
57 Tall Drive
Crawfordville, FL 32327
(850) 926-3561

A printable (8.5 x 11) Map Book is available online at
<https://www.fs.usda.gov/main/florida/maps-pubs>

select
Apalachicola National Forest MVUM



treadlightly!
LEAVING A GOOD IMPRESSION

Travel and recreate with minimum impact.
Respect the environment and the rights of others.

Educate yourself plan and prepare before you go.

Allow for future use of the outdoors by leaving it better than you found it.

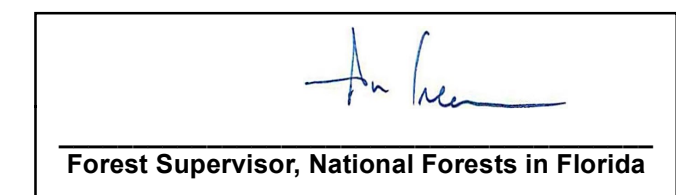
Discover the rewards of responsible recreation.

For more information on Tread Lightly!, go to www.treadlightly.org or call 1-800-966-9900.

The U.S. Department of Agriculture (USDA) prohibits discrimination in all its programs and activities on the basis of race, color, national origin, age, disability, and where applicable, sex, marital status, familial status, parental status, religion, sexual orientation, genetic information, political beliefs, reprisal, or because all or part of an individual's income is derived from any public assistance program. (Not all prohibited bases apply to all programs.) Persons with disabilities who require alternative means for communication of program information (Braille, large print, audiotape, etc.) should contact USDA's TARGET Center at (202) 720-2600 (voice and TDD). To file a complaint of discrimination, write to USDA, Director, Office of Civil Rights, 1400 Independence Avenue, S.W., Washington, D.C. 20250-9410, or call (800) 795-3272 (voice) or (202) 720-6382 (TDD). USDA is an equal opportunity provider and employer.

PURPOSE AND CONTENTS OF THIS MAP

The designations shown on this motor vehicle use map (MVUM) were made by the responsible official pursuant to 36 CFR 212.51, are effective as of the date on the front cover of this MVUM, and will remain in effect until superseded by next year's MVUM.



It is the responsibility of the user to acquire the current MVUM. This MVUM shows the National Forest System roads, National Forest System trails, and the areas on National Forest System lands in the Apalachicola National Forest that are designated for motor vehicle use pursuant to 36 CFR 212.51. This MVUM also identifies the vehicle classes allowed on each route and in each area, and any seasonal restrictions that apply on those routes and in those areas.

Designation of a road, trail, or area for motor vehicle use by a particular class of vehicle under 36 CFR 212.51 should not be interpreted as encouraging or inviting use or implying that the road, trail, or area is passable, actively maintained, or safe for travel. Motor vehicle designations include parking along designated routes and at facilities associated with designated routes when it is safe to do so and when not causing damage to National Forest System resources. Seasonal weather conditions and natural events may render designated roads and trails impassable for extended periods. Designated areas may contain dangerous or impassable terrain. Many designated roads and trails may be passable only by high-clearance vehicles or four-wheel-drive vehicles. Maintenance of designated roads and trails will depend on available resources, and many may receive little maintenance.

This motor vehicle use map identifies those roads, trails, and areas designated for the motor vehicle use under 36 CFR 212.51 for the purpose of enforcing the prohibition at 36 CFR 261.13. This is a limited purpose. The other public roads are shown for information and navigation purposes only and are not subject to designation under the Forest Service travel management regulation.

These designations apply only to National Forest System roads, National Forest System trails, and areas on National Forest System lands.

Legend

- Roads Open to Highway Legal Vehicles
- Trails Open to Wheeled Vehicles 50" or Less in Width
- Trails Open to Motorcycles Only
- Special Vehicle Designation (See Table)
- Seasonal Designation
- Highways, U.S. State
- Other Public Roads
- Short Route Identifier
- MotORIZED Trailhead
- Ranger Station
- Work Center
- Boat Launch
- Swimming Area
- Geologic/Historic Site
- Picnic Area
- FS Campground
- FS Hunt Camp
- Forest or Unit Boundary
- National Forest System Lands
- Non-National Forest System Lands within the National Forest
- Wilderness Areas
- Administrative/Political Boundary
- Lakes and Rivers

PROHIBITIONS

It is prohibited to possess or operate a motor vehicle on National Forest System lands on the Apalachicola National Forest other than in accordance with these designations (36 CFR 261.13).

Violators of 36 CFR 261.13 are subject to a fine of up to \$5,000, imprisonment for up to 6 months, or both (18 U.S.C. 3371(e)). This prohibition applies regardless of the presence or absence of signs.

This map does not display nonmotorized uses, over-snow uses, or other facilities and attractions on the Apalachicola National Forest. Obtain forest visitor information from the local national forest office.

Designated roads, trails and areas may also be subject to temporary emergency closures. As a visitor, you must comply with signs notifying you of such restrictions. A national forest may issue an order to close a road, trail or area on a temporary basis to protect the life, health, or safety of forest visitors or the natural or cultural resources in these areas. Such a temporary and/or emergency closure is consistent with the Travel Management Rule (36 CFR 212.52 (b), 36 CFR 261 subpart B).

The designation "road or trail open to all motor vehicles" does not supersede State traffic law.

EXPLANATION OF LEGEND ITEMS

Roads Open to Highway Legal Vehicles Only:
These roads are open only to motor vehicles licensed under State law for general operation on all public roads within the state.

Trails Open to Wheeled Vehicles 50" or less in Width:
These trails are open only to wheeled, motor vehicles less than 50 inches in width at the widest point on the vehicle.

Special Vehicle Designation:
This symbol indicates the road or trail is open to classes of vehicles other than those listed above. Refer to the Special Designation Table for further instructions.

Trails Open to Motorcycles Only:
These trails are open only to motorcycles. Sidecars are not permitted.

Seasonal Designation:
This symbol, used in conjunction with one of the other road or trail symbols, indicates that the road or trail is open only during certain portions of the year.

Other Public Roads and Trails:
Highways, U.S. State
Other Public Roads

These symbols are used to show routes the Forest Service does not have jurisdiction over and has not designated for motorized use. These symbols are part of the reference layers showing connections to towns and cities outside the forest boundary.

Short Route Identifier:
This symbol is used for roads that are too short to show a symbol type on the map. The symbol contains the number of the road or trail. Users should refer to the corresponding number in the Short Route Table for designation information.

Milepost Marker:
This symbol is used to display the beginning and ending mileposts of a road that has a change in the designation but not the symbology.

MotORIZED Trail Access:
This symbol indicates a trailhead for access to a motorized route. Not all motorized routes have trailheads and those that do may range from primitive to developed.

Trails Open to E-Bikes:
The Forest Service manages e-bikes as a MOTOR VEHICLE. Class 1, 2, and 3 e-bikes are allowed on roads designated for all classes of motor vehicles and roads designated for motorized mixed use. Class 1, 2, and 3 e-bikes are also allowed on trails open to all classes of motor vehicles, including motorcycles.

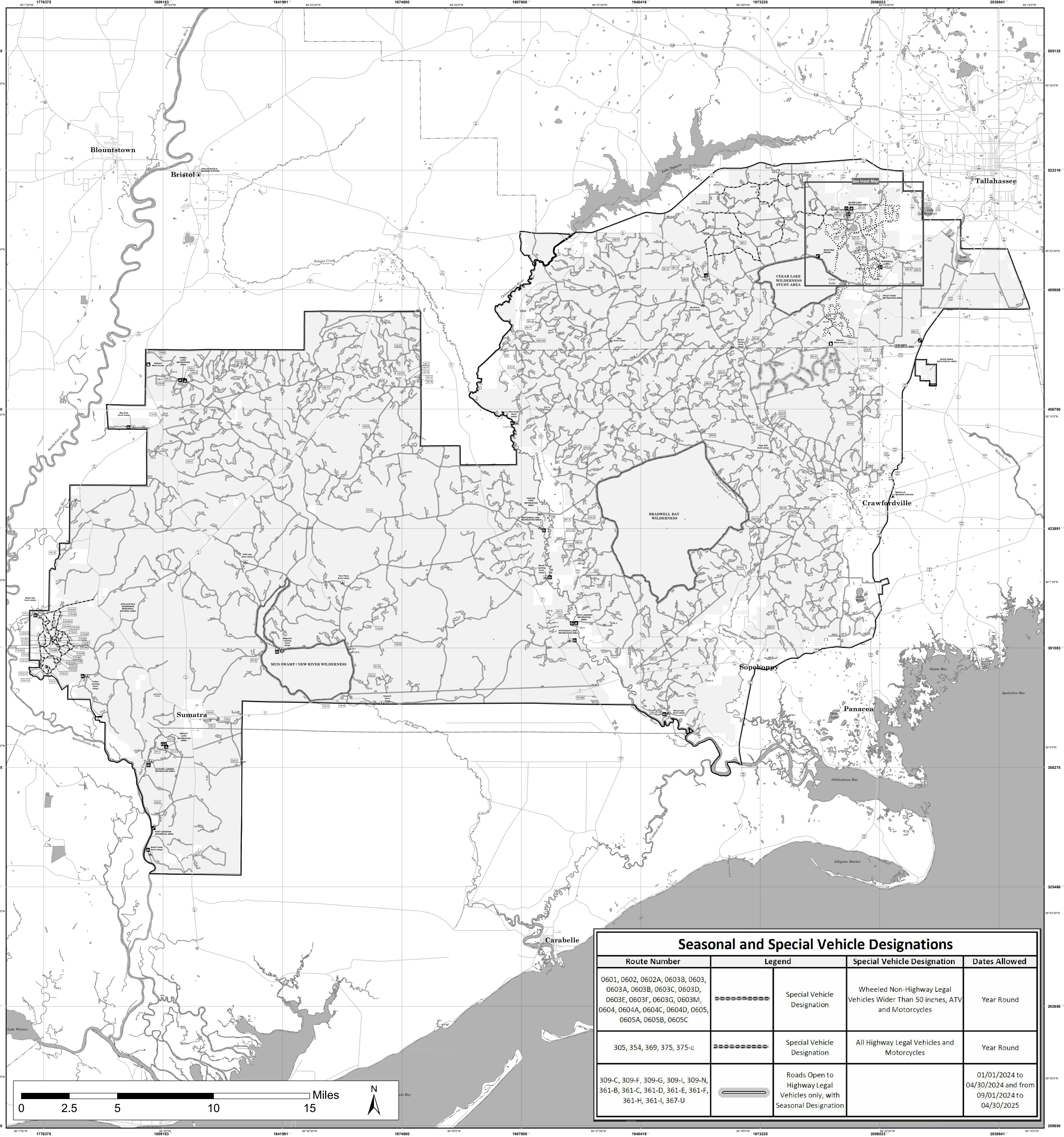
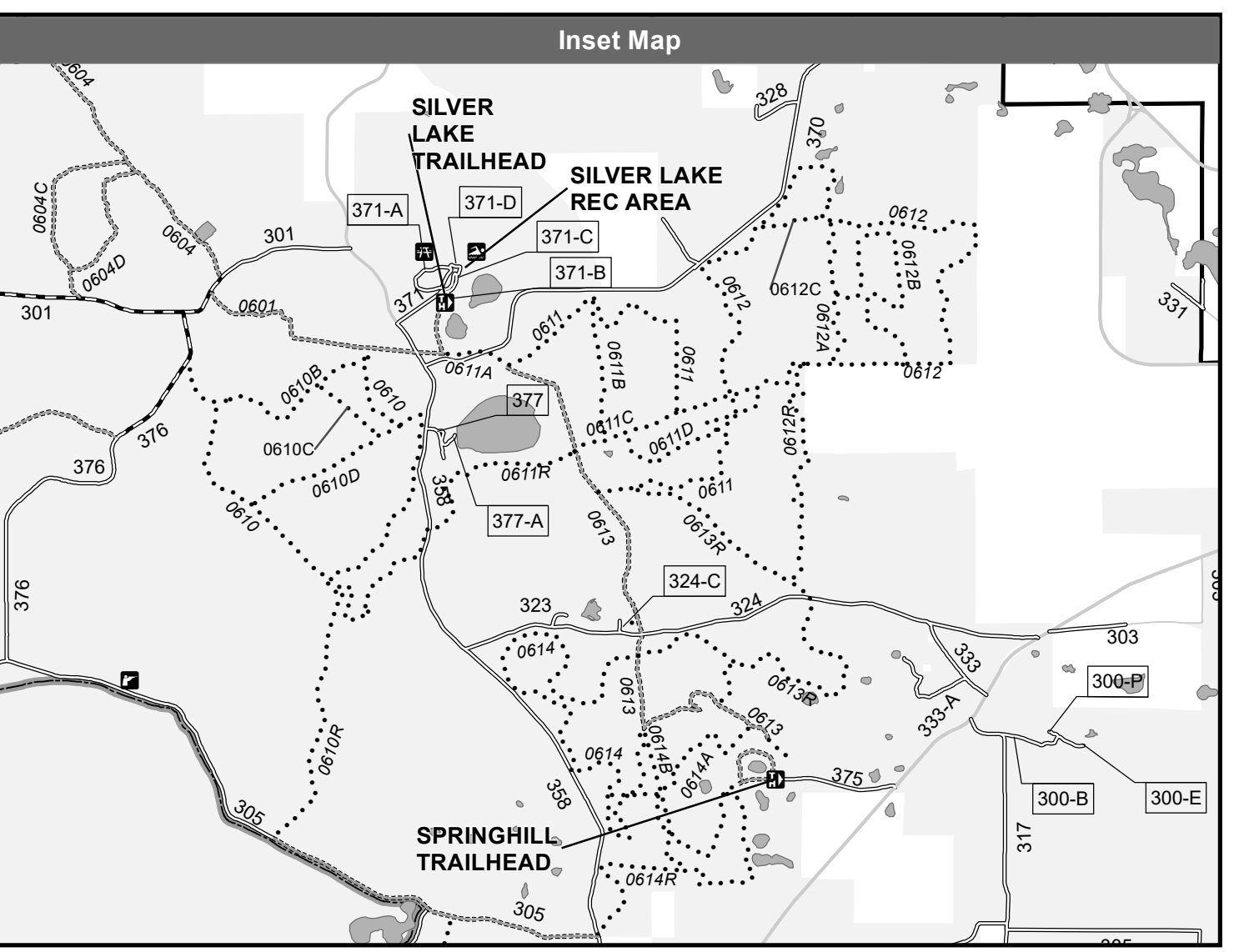
Seasonal Road Designations
All routes with a seasonal designation are open from 01/01/2024 to 04/30/2024 and from 09/01/2024 to 04/30/2025

Roads within Developed Campgrounds
Roads within all Developed Campgrounds are open to only highway legal vehicles, year-round.

IN CASE OF EMERGENCY
DIAL 911
Franklin County Sheriff's Office
Phone: (850) 670-8500
Liberty County Sheriff's Office
Phone: (850) 643-2235
Leon County Sheriff's Office
Phone: (850) 606-3300
Wakulla County Sheriff's Office
Phone: (850) 745-7100
To Report Forest Fires:
Florida Interagency Coordination Center
(850) 323-8600
Select Option 0

ALWAYS REMEMBER TO RESPECT PRIVATE LAND! PROTECT YOUR PRIVILEGE. STAY ON DESIGNATED ROADS AND TRAILS AND IN DESIGNATED AREAS.
Read and understand this map in its entirety. If you have questions, please contact the Apalachicola National Forest for clarification.

As a motor vehicle operator on a National Forest System road, trail, or area you must comply with this map, as well as all Federal, State, and local laws and regulations. Compliance with these rules is your responsibility.



Seasonal and Special Vehicle Designations			
Route Number	Legend	Special Vehicle Designation	Dates Allowed
0601, 0602, 0602A, 0603B, 0603, 0603A, 0603B, 0603C, 0603D, 0603E, 0603F, 0603G, 0603M, 0604, 0604A, 0604C, 0604D, 0605, 0605A, 0605B, 0605C		Wheeled Non-Highway Legal Vehicles Wider than 50 inches, ATV and Motorcycles	Year Round
305, 354, 369, 375, 375-c		All Highway Legal Vehicles and Motorcycles	Year Round
309-C, 309-F, 309-G, 309-I, 309-N, 361-B, 361-C, 361-D, 361-E, 361-F, 361-H, 361-I, 367-U		Roads Open to Highway Legal Vehicles only, with Seasonal Designation	01/01/2024 to 04/30/2024 and from 09/01/2024 to 04/30/2025