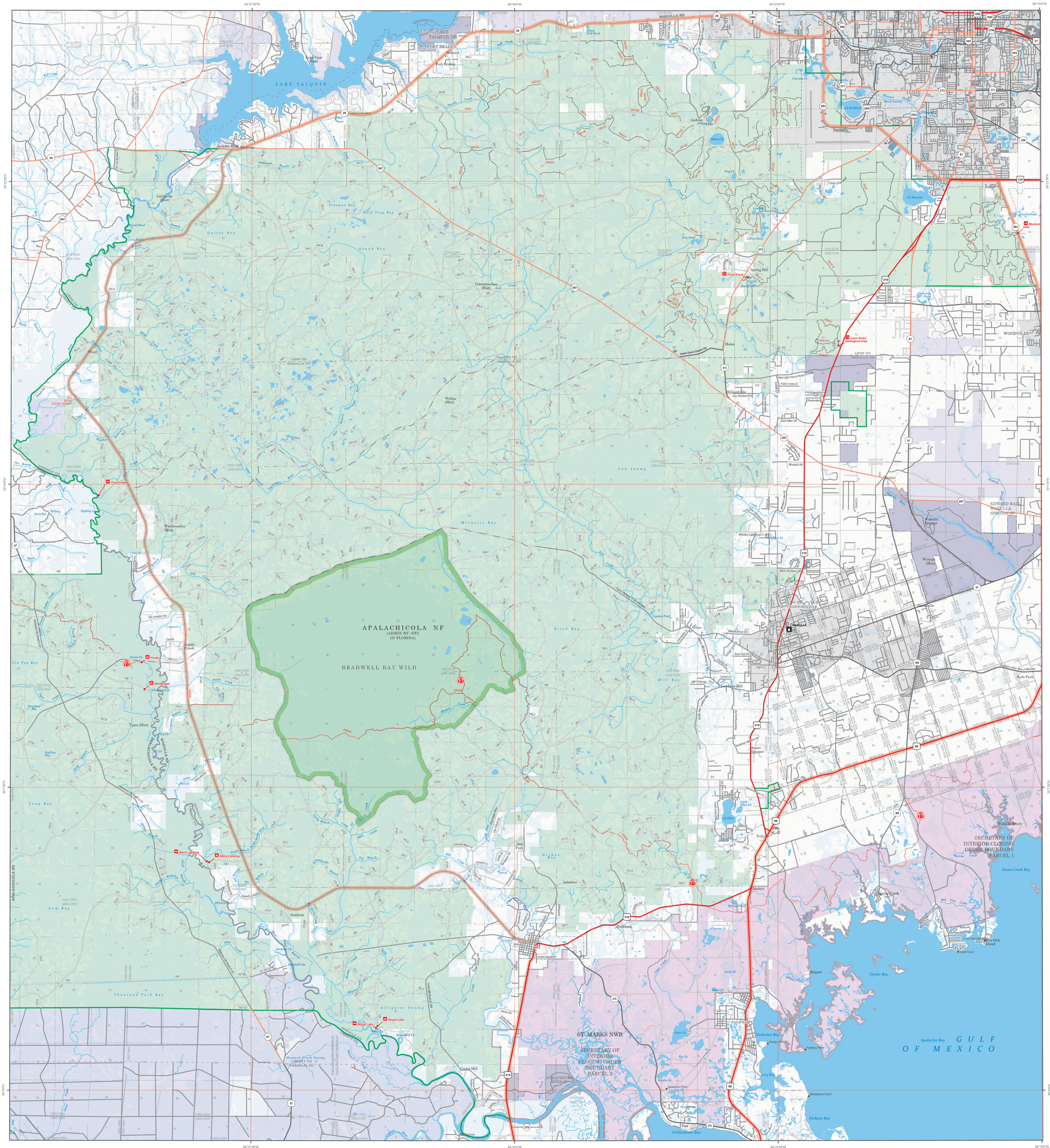
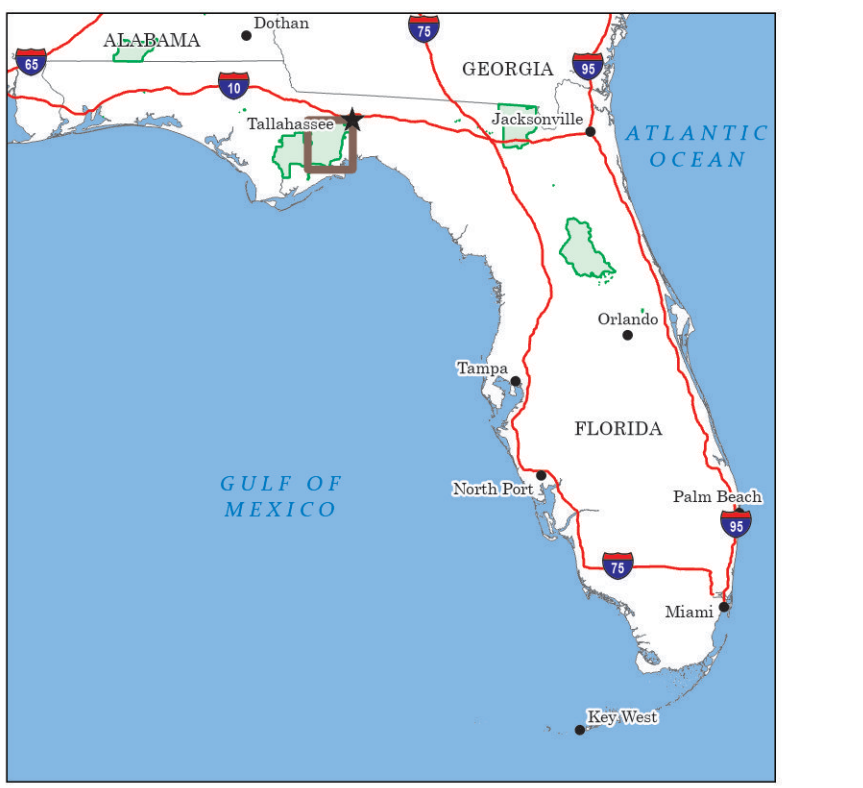
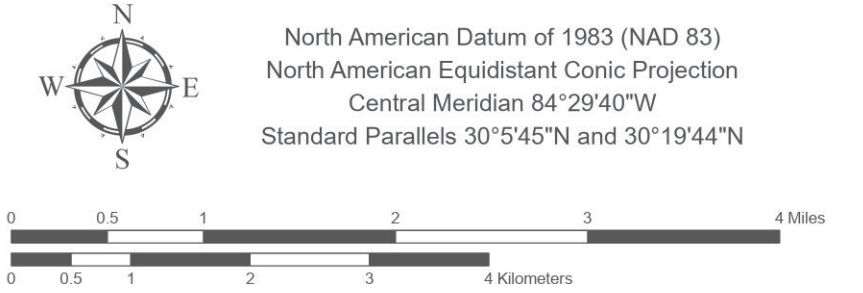


# Wakulla Ranger District National Forests in Florida

Scale 1:63,360



**LEGEND**

**FEDERAL BOUNDARIES**  
 Proclamation National Forest  
 Administrative National Forest  
 Forest Service Ranger District  
 National Park Service  
 U.S. Fish & Wildlife Service

**GEOPOLITICAL BOUNDARIES**  
 State County (or Equivalent)  
 Incorporated Place (City, Town, etc.)  
 Unincorporated Place

**WILDERNESS DESIGNATION**  
 National Wilderness Area  
 Other Designation

**LAND OWNERSHIP**  
 USFS BLM NPS USFWS  
 Tribal State Other

**TOWNSHIP AND RANGE**  
 Township Range  
 Section Line - Surveyed  
 Section Line - Proposed/Unsurveyed

**FEDERAL OFFICES**  
 FS Regional or District  
 Supervisor

**RECREATION**  
 Campground  
 Center  
 Area - Access

**ROADS**  
 Road with the National Forest boundary overlaid  
 Primary Highway  
 Secondary Highway  
 Faded Road  
 Detour Road  
 High Clearance

**ROAD SHIELDS/NUMBER**  
 Interstate U.S. State County BIA  
 Key to Key to Key to Key to

**OTHER TRANSPORTATION**  
 Ferry  
 Tunnel  
 Bridge or Railway

**TRAILS**  
 National Designated Trails  
 National Trail Markers

**NATIONAL TRAIL MARKERS**  
 National Trail Markers  
 Historic Trails

**WATER POINTS**  
 Weir/Spring  
 Rapids  
 Dam / Weir  
 Lock (downstream)  
 Rock (downstream)  
 Rock (upstream)

**WATER LINES**  
 Potential Stream, Canal, or Pipeline  
 Intermittent Stream  
 Underground Pipeline, Aqueduct, Tunnel  
 Head  
 Dam / Weir  
 Lock (downstream)  
 Dam Lock Chamber, Nonwaterway Shore

**WATERBODIES**  
 Potential Intermittent Wetland  
 Freshwater  
 Must Not

**MOTOR VEHICLE USE MAP (MVUM)**  
 The MVUM is a legal enforceable document that identifies the roads, trails, and areas where motor vehicle use is allowed in a Forest Service administrative unit or ranger district. MVUMs are issued each year. It is the responsibility of motor vehicle users to acquire the current MVUM. MVUMs are available FREE at Forest Service offices and at:  
[https://www.fs.usda.gov/recreation/programs/ohv/ohv\\_maps.shtml](https://www.fs.usda.gov/recreation/programs/ohv/ohv_maps.shtml)  
 This is not a legal document. Public lands are subject to change and leasing, and may have access restrictions. Not all roads and trails on this map are open to motor vehicle use. Check with appropriate officials and obtain appropriate regulatory maps and information. Obtain permission before entering private lands.  
 The USDA Forest Service uses the most current and complete data available. GIS data and product accuracy may vary. Using GIS products for purposes other than those for which they were intended may yield inaccurate or misleading results.  
 USDA is an equal opportunity provider, employer, and lender.