

Burn Unit 241-100

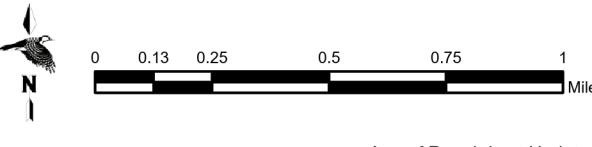
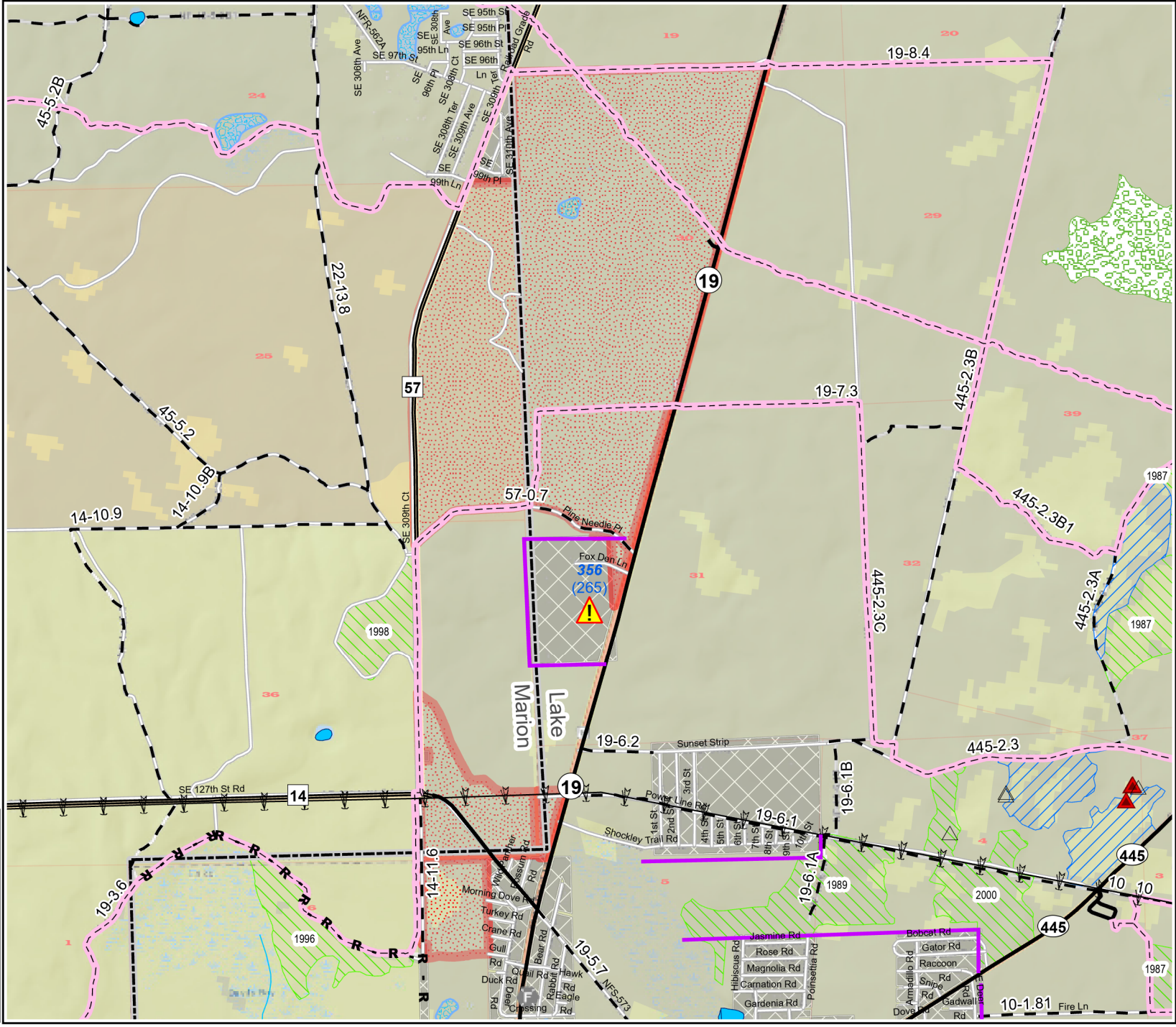
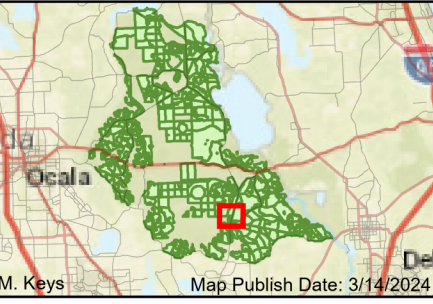
Prescribed Burn Map
 Ocala National Forest
 Seminole Ranger District
 FACTS Acres: 758
 Last Burned:
 SUID: 080505PF05Y24241100

FirePoint

- FY 24 Planned Burn Unit
- Completed FY24
- Editable DropPoints
- RCW Tree Protect
- RCW Tree Not to Protect
- RCW Cluster
- Fire Station
- Control Line - Road
- Boundary-Private
- Power Line
- Transmission Line
- Trails
- Prairies
- Sapling LL & Slash

Burn Unit Info

| Burn Unit | Adjacent Unit Yrs. Since Last Burn |
|---------------------------|------------------------------------|
| Burn Unit | 0-1 |
| Private | 1-2 |
| USFS No Burn | 2-3 |
| Burnable Area | 3-4 |
| Did not burn last 27 yrs | 4-5 |
| Burned during last 27 yrs | 5-10 |
| | 11-13 |



BurnDate _____ Tr.Winds _____ Temp _____ Mix Ht. _____
 RH _____ Disp. Index _____ Wind _____ KBDI _____
 DSR _____ RX Position _____ Burn Boss _____