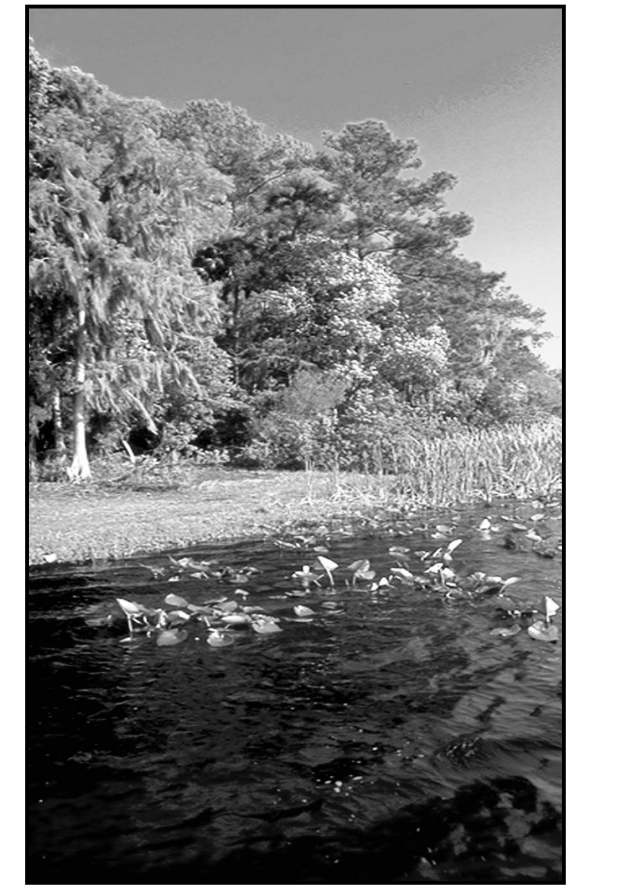


Motor Vehicle Use Map Ocala National Forest



America's Great Outdoors

Florida Forest Service 2023
United States Department of Agriculture



INFORMATION SOURCES
Lake George Ranger District
17147 East Highway 40
Silver Springs, FL 34488
(352) 625 - 2520
OR
Seminole Ranger District
40929 State Road 19
Umatilla, FL 32784
(352) 669 - 3153

IN CASE OF EMERGENCY
DIAL 911
Lake County Sheriff's Office
Phone: (352) 343-2500
Marion County Sheriff's Office
Phone: (352) 732-9111
Putnam County Sheriff's Office
Phone: (386) 329-0800
To Report Forest Fires:
Florida Interagency Coordination Center
(850) 523 - 8600
Select Option 0



tread lightly!
LEAVING A GOOD IMPRESSION



In accordance with Federal civil rights law and U.S. Department of Agriculture (USDA) civil rights regulations and policies, the USDA, its Agencies, offices, and employees, and institutions participating in or administering USDA programs are prohibited from discriminating based on race, color, national origin, religion, sex, gender identity (including gender expression), sexual orientation, disability, age, marital status, family/parental status, income derived from a public assistance program, political beliefs, or reprisal or retaliation for prior civil rights activity, in any program or activity conducted or funded by USDA (not all bases apply to all programs). Remedies and complaint filing deadlines vary by program or incident.

Persons with disabilities who require alternative means of communication for program information (e.g., Braille, large print, audiotape, American Sign Language, etc.) should contact the responsible Agency or USDA's TARGET Center at (202) 720-2600 (voice and TTY) or contact USDA through the Federal Relay Service at (800) 877-8339. Additionally, program information may be made available in languages other than English.

To file a program discrimination complaint, complete the USDA Program Discrimination Complaint Form, AD-3027, found online at http://www.ascr.usda.gov/complaint_filing_cust.html and at any USDA office or write a letter addressed to USDA and provide in the letter all of the information requested in the form. To request a copy of the complaint form, call (866) 632-9992. Submit your completed form or letter to USDA by: (1) mail: U.S. Department of Agriculture, Office of the Assistant Secretary for Civil Rights, 1400 Independence Avenue, SW, Washington, D.C. 20250-9410; (2) fax: (202) 690-7442; or (3) email: program.intake@usda.gov.
USDA is an equal opportunity provider, employer, and lender.

PURPOSE AND CONTENTS OF THIS MAP

The designations shown on this motor vehicle use map (MVUM) were made by the responsible official pursuant to 36 CFR 212.51, are effective as of the date on the front cover of this MVUM, and will remain in effect until superseded by next year's MVUM.

Kelly Russell
Forest Supervisor, National Forests in Florida

It is the responsibility of the user to acquire the current MVUM. This MVUM shows the National Forest System roads, National Forest System trails, and the areas on National Forest System lands in the Ocala National Forest that are designated for motor vehicle use pursuant to 36 CFR 212.51. This MVUM also identifies the vehicle classes allowed on each route and in each area, and any seasonal restrictions that apply on those routes and in those areas.

Designation of a road, trail, or area for motor vehicle use by a particular class of vehicle under 36 CFR 212.51 should not be interpreted as encouraging or inviting use or implying that the road, trail, or area is passable, actively maintained, or safe for travel. Motor vehicle designations include parking along designated routes and at facilities associated with designated routes when it is safe to do so and when not causing damage to National Forest System resources. Seasonal weather conditions and natural events may render designated roads and trails impassable for extended periods. Designation areas may contain dangerous or impassable terrain. Many designated roads and trails may be passable only by high-clearance vehicles or four-wheel-drive vehicles. Maintenance of designated roads and trails will depend on available resources, and many may receive little maintenance.

This motor vehicle use map identifies those roads, trails, and areas designated for the motor vehicle use under 36 CFR 212.51 for the purpose of enforcing the prohibition at 36 CFR 261.13. This is a limited purpose. Other public roads are shown for information and navigation purposes only and are not subject to designation under the Forest Service travel management regulations.

These designations apply only to National Forest System roads, National Forest System trails, and areas on National Forest System lands.

OPERATOR RESPONSIBILITIES

Operating a motor vehicle on National Forest System roads, National Forest System trails, and in areas on National Forest System lands carries a greater responsibility than operating that vehicle in a city or other developed setting. Not only must you know and follow all applicable traffic laws, you need to show concern for the environment as well as other forest users. The misuse of motor vehicles can lead to the temporary or permanent closure of any designated road, trail, or area. As a motor vehicle operator, you are also subject to State traffic law, including State requirements for licensing, registration, and operation of the vehicle in question.

Motor vehicle use, especially off-highway vehicle use, involves inherent risks that may cause property damage, serious injury, and possibly death to participants. Drive cautiously and anticipate rough surfaces and features, such as mud, vegetation, and water crossings common to remote driving conditions. By your participation, you voluntarily assume full responsibility for these damages, risks, and dangers. Take care at all times to protect yourself and those under your responsibility.

Much of the Ocala National Forest is remote. Medical assistance may not be readily available. Cellular telephones do not work in many areas of the Ocala National Forest. Take adequate food, water, first-aid supplies, and other equipment appropriate for the conditions and expected weather.

ALWAYS REMEMBER TO RESPECT PRIVATE LAND! PROTECT YOUR PRIVILEGE. STAY ON DESIGNATED ROADS AND TRAILS AND IN DESIGNATED AREAS.

Read and understand this map in its entirety. If you have questions, please contact the Ocala National Forest for clarification.

As a motor vehicle operator on a National Forest System road, trail, or area you must comply with this map, as well as all Federal, State, and local laws and regulations. Compliance with these rules is your responsibility.

PROHIBITIONS

It is prohibited to possess or operate a motor vehicle on National Forest System lands on the Ocala National Forest other than in accordance with these designations (36 CFR 212.51).

Violators of 36 CFR 261.13 are subject to a fine of up to \$5,000, imprisonment for up to 6 months, or both (18 U.S.C. 3671(a)). This prohibition applies regardless of the presence or absence of signs.

This map does not display nonmotorized use or other facilities and attractions on the Ocala National Forest. Obtain forest visitor information from the local national forest office.

Designated roads, trails and areas may also be subject to temporary emergency closures. As a visitor, you must comply with signs notifying you of such restrictions. A national forest may issue an order to close a road, trail or area on a temporary basis to protect the life, health, or safety of forest visitors or the natural or cultural resources in these areas. Such a temporary and/or emergency closure is consistent with the Travel Management Rule (36 CFR 212.52 (d), 36 CFR 261 subpart B).

The designation "road or trail open to all motor vehicles" does not supersede State traffic law.

Legend

- Roads Open to Highway Legal Vehicles
- Trails Open to Wheeled Vehicles 50' or Less in Width
- Trails Open to Motorcycles Only
- Special Vehicle Designation (See Table)
- Seasonal Designation
- Highways, U.S. State
- Other Public Roads
- Short Route Identifier
- Milepost Marker
- FS Campground
- Picnic Area
- Motorized Trailhead
- Ranger Station
- Forest or Unit Boundary
- National Forest System Lands
- Non-National Forest System Lands within the National Forest
- Wilderness Areas
- Administrative/Political Boundary
- Lakes and Rivers

0 0.4 0.8 1.6 2.4 3.2 Miles

EXPLANATION OF LEGEND ITEMS

Roads Open to Highway Legal Vehicles Only:
These roads are open only to motor vehicles licensed under State law for general operation on all public roads within the state.

Trails Open to Wheeled Vehicles 50' or Less in Width:
These trails are open only to wheeled, motor vehicles less than 50 inches in width at the widest point on the vehicle.

Special Vehicle Designation:
This symbol indicates the road or trail is open to classes of vehicles other than those listed above. Refer to the Special Designation Table for further instructions.

Trails Open to Motorcycles Only:
These trails are open only to motorcycles. Sidecars are not permitted.

Seasonal Designation:
This symbol, used in conjunction with one of the other road or trail symbols, indicates that the road or trail is open only during certain portions of the year.

Other Public Roads and Trails:
Highways, U.S. State
Other Public Roads

These symbols are used to show routes the Forest Service does not have jurisdiction over and has not designated for motorized use. These symbols are part of the reference layer showing connections to towns and cities outside the forest boundary.

Short Route Identifier:
(70333)
This symbol is used for roads that are too short to show a symbol type on the map. The symbol contains the number of the road or trail. Users should refer to the corresponding number in the Short Route Table for designation information.

Milepost Marker:
This symbol is used to display the beginning and ending mileposts of a road that has a change in the designation but not the symbology.

Motorized Trail Access:
This symbol indicates a trailhead for access to a motorized route. Not all motorized routes have trailheads and those that do may range from primitive to developed.

Trails Open to E-Bikes:
The Forest Service manages e-bikes as a MOTOR VEHICLE. Class 1, 2, and 3 e-bikes are allowed on roads designated for all classes of motor vehicles and roads designated for motorized mixed use. Class 1, 2, and 3 e-bikes are also allowed on trails open to all classes of motor vehicles, including motorcycles.

Seasonal Road Designations
All routes with a seasonal designation are open from 11/01 to 01/15.

Roads within Developed Campgrounds
Roads within all Developed Campgrounds, except Lake Delancy West, are open to only highway legal vehicles year-round. See Inset Map 2 for Lake Delancy West Campground.

Inset Map 1
74-4.0, 74-4.4, 74-4.1, 70-3.4, 70-3.4B, 70-3.4C, 70-4.7A, 70-4.7B, 70-4.7C, 70-4.7D, 70-4.7E, 70-4.7F, 70-4.7G, 70-4.7H, 70-4.7I, 70-4.7J, 70-4.7K, 70-4.7L, 70-4.7M, 70-4.7N, 70-4.7O, 70-4.7P, 70-4.7Q, 70-4.7R, 70-4.7S, 70-4.7T, 70-4.7U, 70-4.7V, 70-4.7W, 70-4.7X, 70-4.7Y, 70-4.7Z

Inset Map 2
LAKES DELANCY EAST CAMPGROUND
LAKES DELANCY WEST CAMPGROUND



Special Vehicle Designations

Route Number	Legend	Special Vehicle Designation	Dates Allowed	Beginning Mile Post	Ending Mile Post
05-10.0, 08-08-1.0, 09-20.0, 09-20.3, 09-20.3A, 09-30.5, 09-32.7, 09-33.7, 09-33.7A, 09-33.7B, 09-35.8, 09-52A, 10, 10, 1.01, 11-15.2A, 11-17.0, 11-17.0B, 11-18.4, 11-18.4A, 11-19.2, 11-22.4, 11-23.7, 11-15.2, 13-14.4, 13-8.7A, 14-6.0, 14-8.8, 14-8.8, 16-0.4, 16-0.2, 1, 16-0.2, 1A, 16-0.3, 16-0.3A, 16-0.3B, 16-0.3C, 16-0.3D, 16-0.3E, 16-0.3F, 16-0.3G, 16-0.3H, 16-0.3I, 16-0.3J, 16-0.3K, 16-0.3L, 16-0.3M, 16-0.3N, 16-0.3O, 16-0.3P, 16-0.3Q, 16-0.3R, 16-0.3S, 16-0.3T, 16-0.3U, 16-0.3V, 16-0.3W, 16-0.3X, 16-0.3Y, 16-0.3Z, 16-0.3AA, 16-0.3AB, 16-0.3AC, 16-0.3AD, 16-0.3AE, 16-0.3AF, 16-0.3AG, 16-0.3AH, 16-0.3AI, 16-0.3AJ, 16-0.3AK, 16-0.3AL, 16-0.3AM, 16-0.3AN, 16-0.3AO, 16-0.3AP, 16-0.3AQ, 16-0.3AR, 16-0.3AS, 16-0.3AT, 16-0.3AU, 16-0.3AV, 16-0.3AW, 16-0.3AX, 16-0.3AY, 16-0.3AZ	Special Vehicle Designation	All Highway Legal Vehicles, Wheeled Non-Highway Legal Vehicles Less than 65 inches, All Vehicles 50 inches Wide or Less	01/01-12/31		
43-18, 44-1.1, 61-61-1.7, 61-1A, 66-5.5, 74-6.0A	Special Vehicle Designation	All Highway Legal Vehicles, All Vehicles 50 inches Wide or Less	01/01-12/31		
0220N-0221, 0220N-0221-A, 0221-B, 0222, 0223, 0224, 0224-A, 0224-B, 0224-C, 0224-D, 0224-E, 0224-F, 0224-G, 0224-H, 0224-I, 0224-J, 0224-K, 0224-L, 0224-M, 0224-N, 0224-O, 0224-P, 0224-Q, 0224-R, 0224-S, 0224-T, 0224-U, 0224-V, 0224-W, 0224-X, 0224-Y, 0224-Z	Special Vehicle Designation	Wheeled Non-Highway Legal Vehicles Less than 65 inches, All Wheeled Vehicles 50 inches Wide or Less	01/01-12/31		
37-1.8	Special Vehicle Designation, with Seasonal Designation	Wheeled Non-Highway Legal Vehicles Less than 65 inches, All Vehicles 50 inches Wide or Less	01/01-12/31	1.270	1.343