



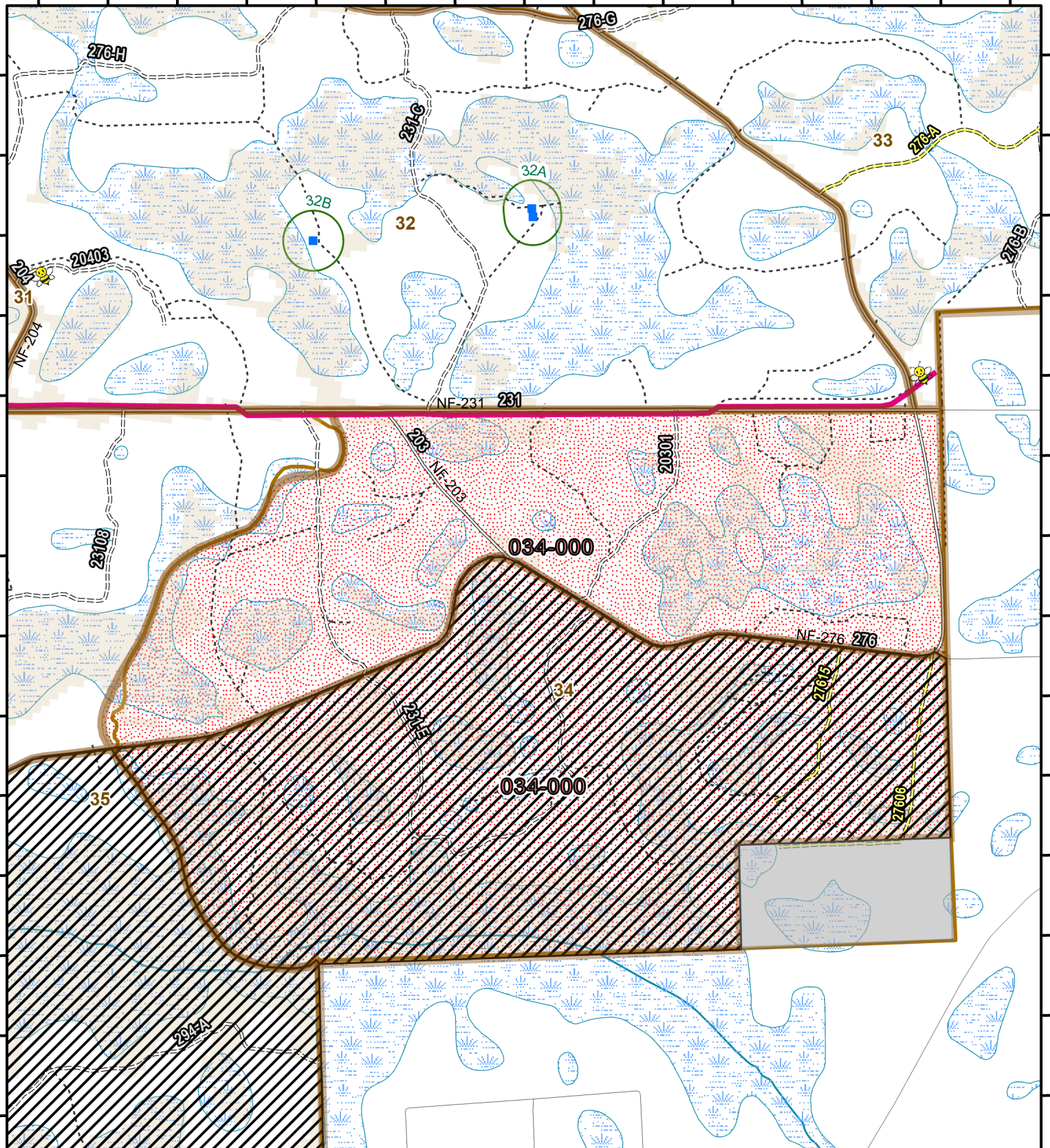
Osceola National Forest Prescribed Fire - RxBurn Map



82°18'30"W 82°18'10"W 82°17'50"W 82°17'30"W 82°17'10"W 82°16'50"W 82°16'30"W 82°16'10"W

30°19'50"N 30°20'0"N 30°20'10"N 30°20'20"N 30°20'30"N 30°20'40"N 30°20'50"N 30°21'0"N 30°21'10"N 30°21'20"N 30°21'30"N 30°21'40"N 30°21'50"N 30°22'0"N

30°19'50"N 30°20'0"N 30°20'10"N 30°20'20"N 30°20'30"N 30°20'40"N 30°20'50"N 30°21'0"N 30°21'10"N 30°21'20"N 30°21'30"N 30°21'40"N 30°21'50"N 30°22'0"N



Burn Unit: 034-000
Last Burn Date: 2/2/2023
FACTS Acres: 637
SUID: 080504PF04Y24034000



3/14/2024

- FY 24 Planned Rx Burn Unit
- FY24 Completed Rx Burn
- Burn Unit
- Burn Unit Exclusion
- Inholding
- Forest Mgt. Compartment
- RCW Cluster
- RCW Tree No Prep
- Pipeline
- Apiary
- Not burned 1994-2021
- Burned >=1x 1994-2021

0 0.4 0.8 Miles
https://ftp.wildfire.gov/public/incident_specific_data/Fuels/FL_FNF/OSC/



Maps Lie,
Trust But Verify
1:20,000

