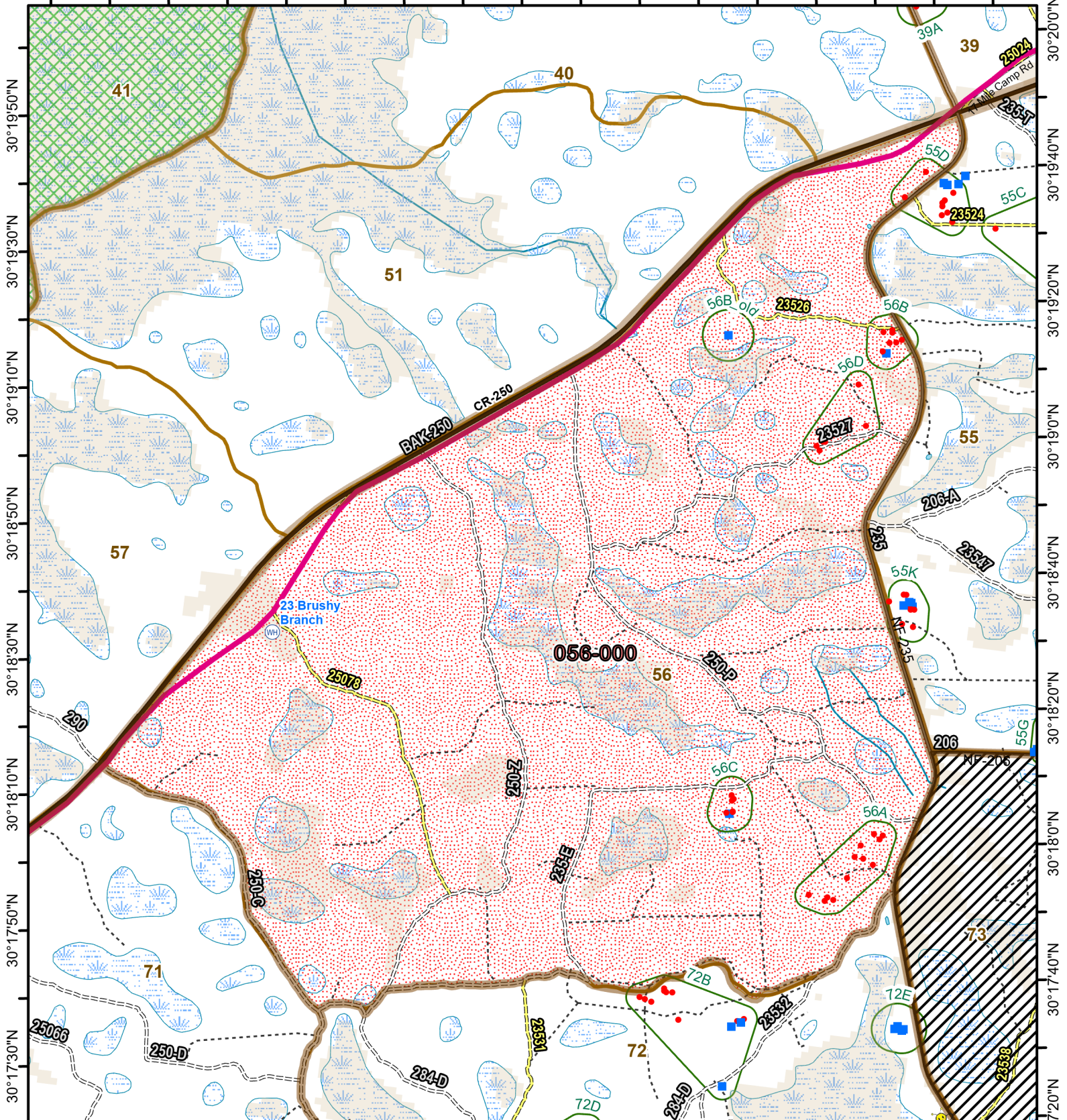




Osceola National Forest Prescribed Fire - RxBurn Map



82°26'10"W 82°25'50"W 82°25'30"W 82°25'10"W 82°24'50"W 82°24'30"W 82°24'10"W 82°23'50"W 82°23'30"W



Burn Unit: 056-000
Last Burn Date: 2/16/2023
FACTS Acres: 2190
SUID: 080504PF04Y24056000

- FY 24 Planned Rx Burn Unit
- RCW Tree No Prep
- FY24 Completed Rx Burn
- Pipeline
- Burn Unit
- Burn Unit Exclusion
- Helispot and Dipsite
- Inholding
- Apiary
- Forest Mgt. Compartment
- RCW Cluster
- Not burned 1994-2021
- Burned >=1x 1994-2021



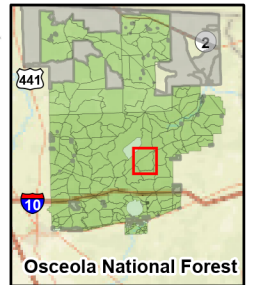
3/14/2024

0 0.45 0.9 Miles

https://ftp.wildfire.gov/public/incident_specific_data/Fuels/FL_FNF/OSC/



Maps Lie,
Trust But Verify
1:23,000



30°20'0"N
30°19'40"N
30°19'20"N
30°19'0"N
30°18'40"N
30°18'20"N
30°18'0"N
30°17'40"N
30°17'20"N