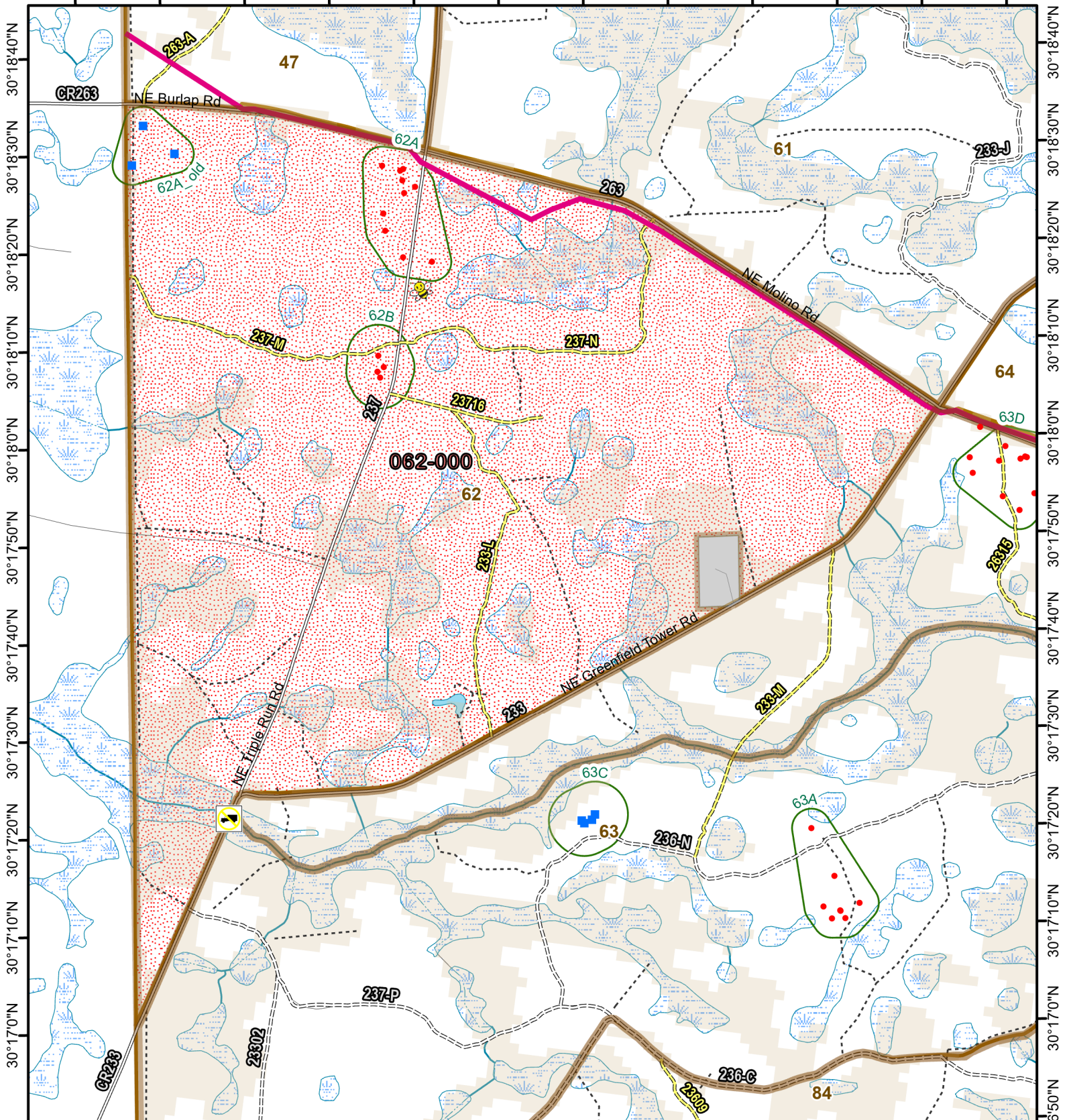




# Osceola National Forest Prescribed Fire - RxBurn Map



82°36'40"W 82°36'30"W 82°36'20"W 82°36'10"W 82°36'0"W 82°35'50"W 82°35'40"W 82°35'30"W 82°35'20"W 82°35'10"W 82°35'0"W 82°34'50"W



**Burn Unit: 062-000**  
Last Burn Date: 3/18/2022  
FACTS Acres: 980  
SUID: 080504PF04Y24062000



3/14/2024

- FY 24 Planned Rx Burn Unit
- RCW Tree No Prep
- Burn Unit
- Pipeline
- Burn Unit Exclusion
- Apiary
- Inholding
- Bridge (19 ton)
- Forest Mgt. Compartment
- Not burned 1994-2021
- RCW Cluster
- RCW Tree Prep
- Burned >=1x 1994-2021

0 0.3 0.6 Miles

[https://ftp.wildfire.gov/public/incident\\_specific\\_data/Fuels/FL\\_FNF/OSC/](https://ftp.wildfire.gov/public/incident_specific_data/Fuels/FL_FNF/OSC/)



Maps Lie,  
Trust But Verify  
1:16,000



30°18'40"N 30°18'30"N 30°18'20"N 30°18'10"N 30°18'0"N 30°17'50"N 30°17'40"N 30°17'30"N 30°17'20"N 30°17'10"N 30°17'0"N 30°16'50"N