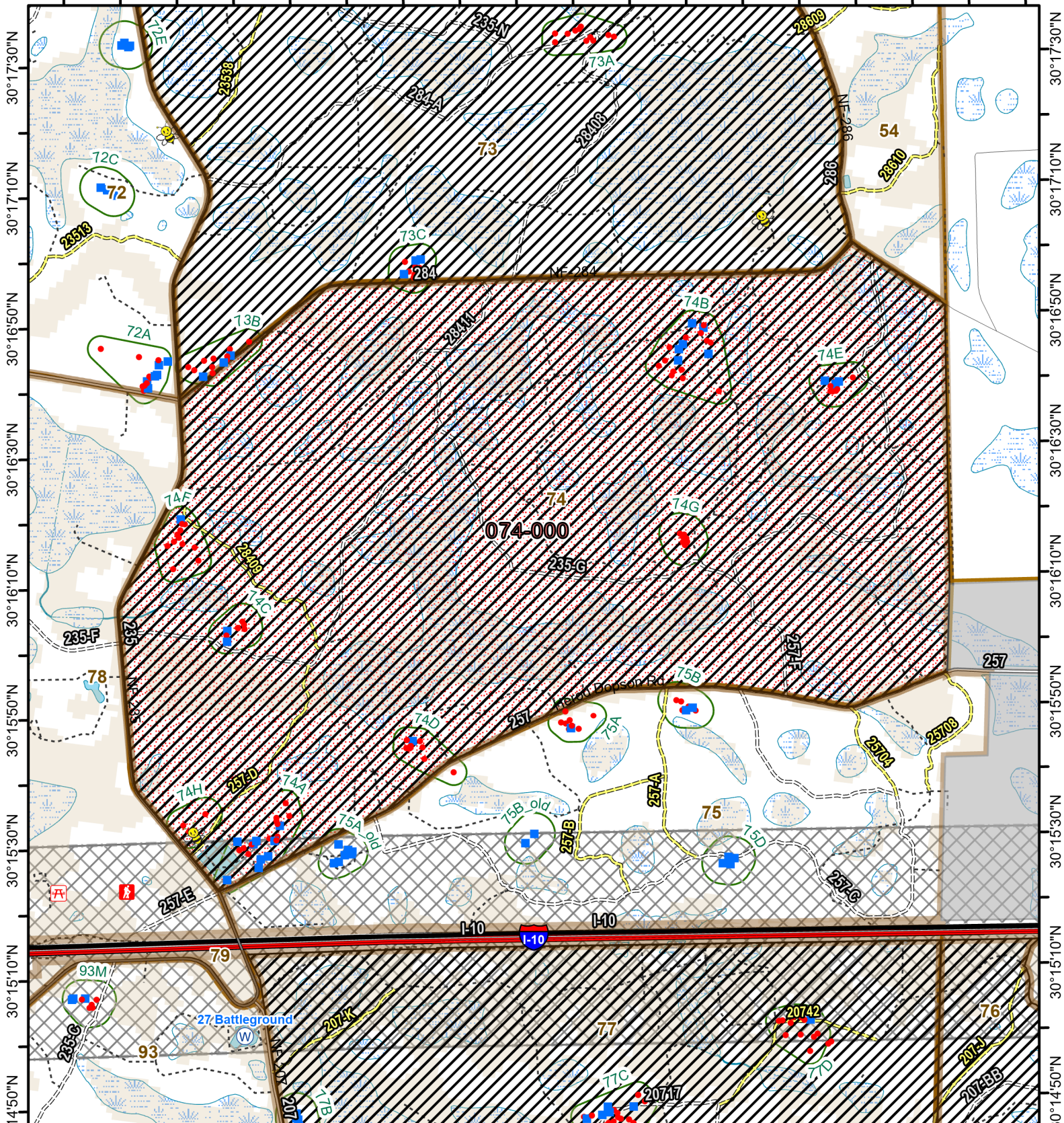




# Osceola National Forest Prescribed Fire - RxBurn Map



82°24'0"W 82°23'40"W 82°23'20"W 82°23'0"W 82°22'40"W 82°22'20"W 82°22'0"W 82°21'40"W 82°21'20"W



**Burn Unit: 074-000**  
Last Burn Date: 2/9/2024  
FACTS Acres: 2034  
SUID: 080504PF04Y24074000



3/14/2024

- FY 24 Planned Rx Burn Unit
- FY24 Completed Rx Burn
- Burn Unit
- Burn Unit Exclusion
- Inholding
- Forest Mgt. Compartment
- Smoke Sensitive Buffer
- RCW Cluster
- RCW Tree Prep
- RCW Tree No Prep
- Dip Site
- Apiary
- Not burned 1994-2021
- Burned >=1x 1994-2021

0 0.5 1 Miles

[https://ftp.wildfire.gov/public/incident\\_specific\\_data/Fuels/FL\\_FNF/OSC/](https://ftp.wildfire.gov/public/incident_specific_data/Fuels/FL_FNF/OSC/)



Maps Lie,  
Trust But Verify  
1:24,000

