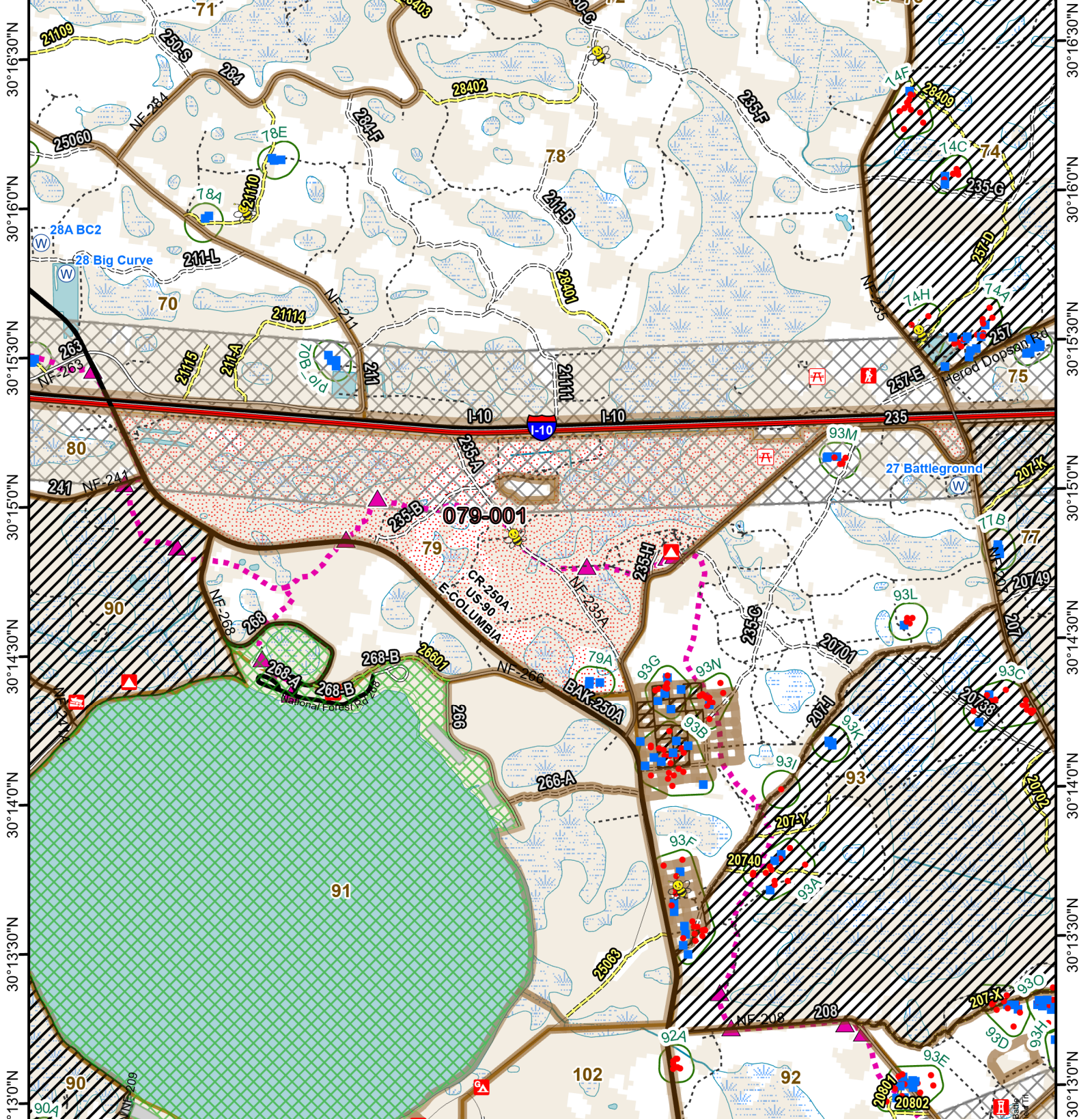




# Osceola National Forest Prescribed Fire - RxBurn Map



82°27'0"W 82°26'30"W 82°26'0"W 82°25'30"W 82°25'0"W 82°24'30"W 82°24'0"W 82°23'30"W



**Burn Unit: 079-001**  
Last Burn Date: 2/11/2007  
FACTS Acres: 906  
SUID: 080504PF04Y24079001



3/14/2024

- FY 24 Planned Rx Burn Unit
- FY24 Completed Rx Burn
- Burn Unit
- Burn Unit Exclusion
- Inholding
- Forest Mgt. Compartment
- Smoke Sensitive Buffer
- RCW Cluster
- RCW Tree Prep
- RCW Tree No Prep
- FNSTrail
- Dip Site
- Apiary
- Not burned 1994-2021
- Burned >=1x 1994-2021

0 0.65 1.3 Miles

[https://ftp.wildfire.gov/public/incident\\_specific\\_data/Fuels/FL\\_FNF/OSC/](https://ftp.wildfire.gov/public/incident_specific_data/Fuels/FL_FNF/OSC/)



Maps Lie,  
Trust But Verify  
1:32,000

