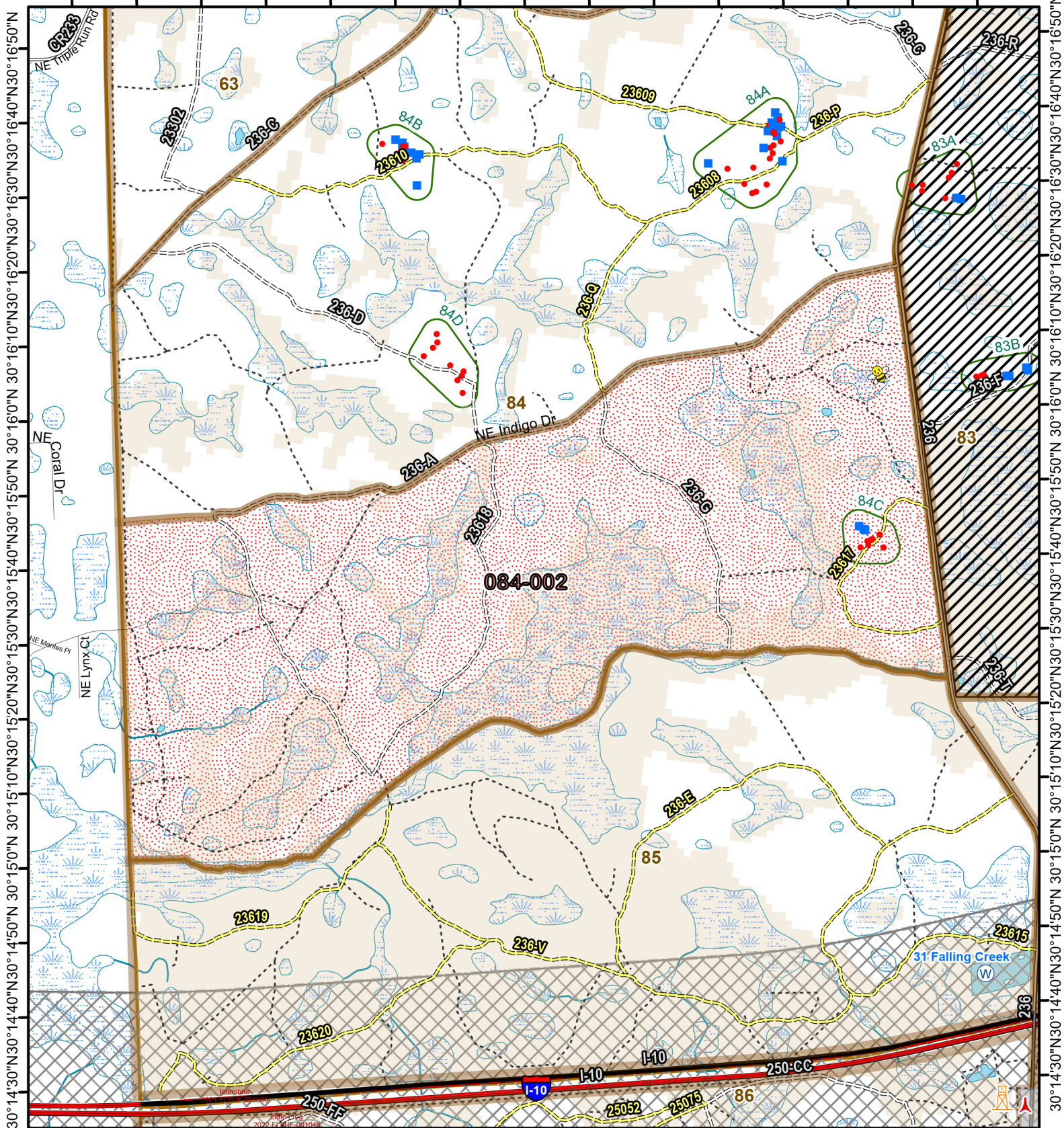




Osceola National Forest Prescribed Fire - RxBurn Map



82°36'40"W 82°36'20"W 82°36'0"W 82°35'40"W 82°35'20"W 82°35'0"W 82°34'40"W 82°34'20"W



Burn Unit: 084-002

Last Burn Date: 2/21/2018

FACTS Acres: 1102

SUID: 080504PF04Y24084002



3/14/2024

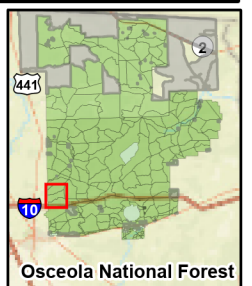
- FY 24 Planned Rx Burn Unit
- FY24 Completed Rx Burn
- Burn Unit
- Burn Unit Exclusion
- Inholding
- Forest Mgt. Compartment
- Smoke Sensitive Buffer
- RCW Cluster
- RCW Tree Prep
- RCW Tree No Prep
- W Dip Site
- 🐝 Apiary
- 🗼 Aviation Firtowers
- ⬆️ Towers (FAA)
- Not burned 1994-2021
- Burned >=1x 1994-2021

0 0.4 0.8 Miles

https://ftp.wildfire.gov/public/incident_specific_data/Fuels/FL_FNF/OSC/



Maps Lie, Trust But Verify
1:21,000



30°14'30"N 30°14'40"N 30°14'50"N 30°15'00"N 30°15'10"N 30°15'20"N 30°15'30"N 30°15'40"N 30°15'50"N 30°16'00"N 30°16'10"N 30°16'20"N 30°16'30"N 30°16'40"N 30°16'50"N