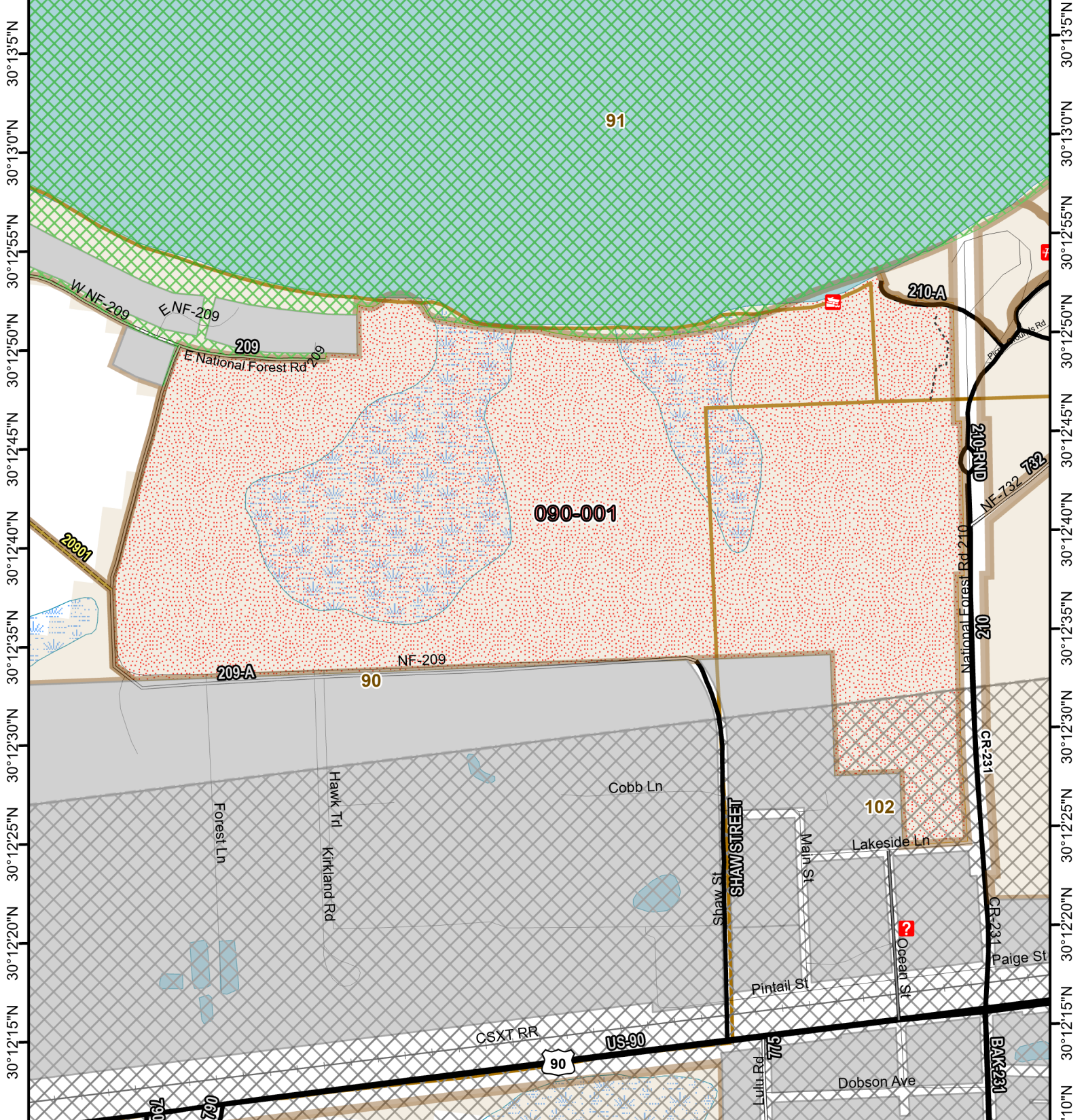




Osceola National Forest Prescribed Fire - RxBurn Map



82°26'35"W 82°26'30"W 82°26'25"W 82°26'20"W 82°26'15"W 82°26'10"W 82°26'5"W 82°26'0"W 82°25'55"W 82°25'50"W 82°25'45"W 82°25'40"W



Burn Unit: 090-001
Last Burn Date: 2/4/2018
FACTS Acres: 180
SUID: 080504PF04Y24090001



3/14/2024

- FY 24 Planned Rx Burn Unit
- Forest Mgt. Compartment
- Burn Unit
- Smoke Sensitive Buffer
- Burn Unit Exclusion
- Not burned 1994-2021
- Inholding
- Burned >=1x 1994-2021

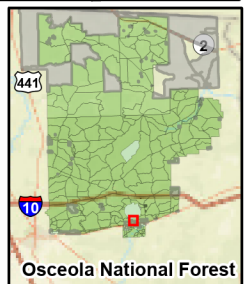
0 0.15 0.3 Miles

https://ftp.wildfire.gov/public/incident_specific_data/Fuels/FL_FNF/OSC/



Maps Lie,
Trust But Verify

1:8,000



30°13'5"N
30°13'0"N
30°12'55"N
30°12'50"N
30°12'45"N
30°12'40"N
30°12'35"N
30°12'30"N
30°12'25"N
30°12'20"N
30°12'15"N
30°12'10"N