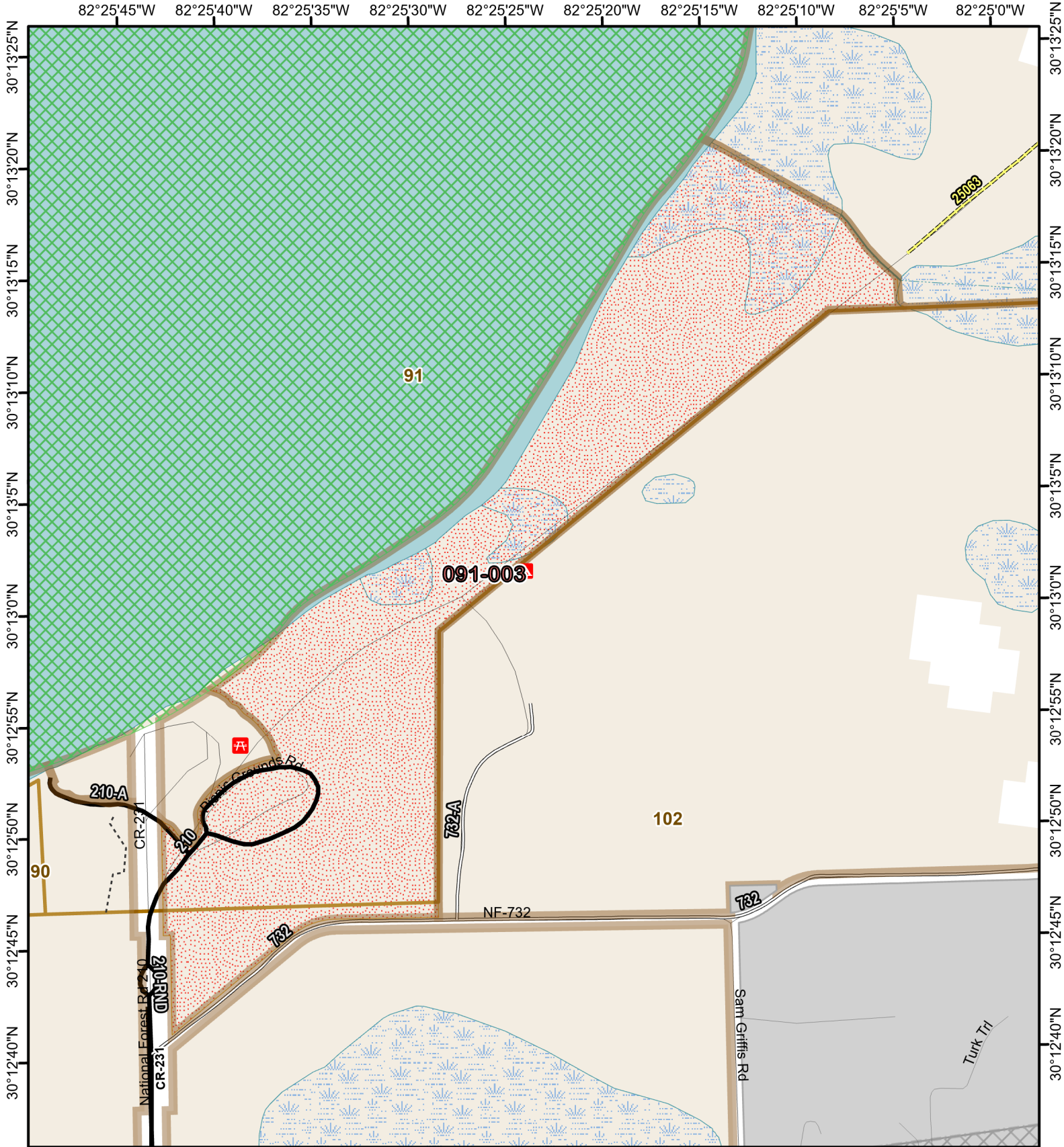




# Osceola National Forest Prescribed Fire - RxBurn Map



82°25'45"W 82°25'40"W 82°25'35"W 82°25'30"W 82°25'25"W 82°25'20"W 82°25'15"W 82°25'10"W 82°25'5"W 82°25'0"W



## Burn Unit: 091-003

Last Burn Date:  
FACTS Acres: 75  
SUID: 080504PF04Y24091003



3/14/2024

- FY 24 Planned Rx Burn Unit
- Forest Mgt. Compartment
- Burn Unit Exclusion
- Smoke Sensitive Buffer
- Not burned 1994-2021
- Inholding
- Burned >=1x 1994-2021

0 0.1 0.2 Miles

[https://ftp.wildfire.gov/public/incident\\_specific\\_data/Fuels/FL\\_FNF/OSC/](https://ftp.wildfire.gov/public/incident_specific_data/Fuels/FL_FNF/OSC/)



Maps Lie,  
Trust But Verify

1:7,000

