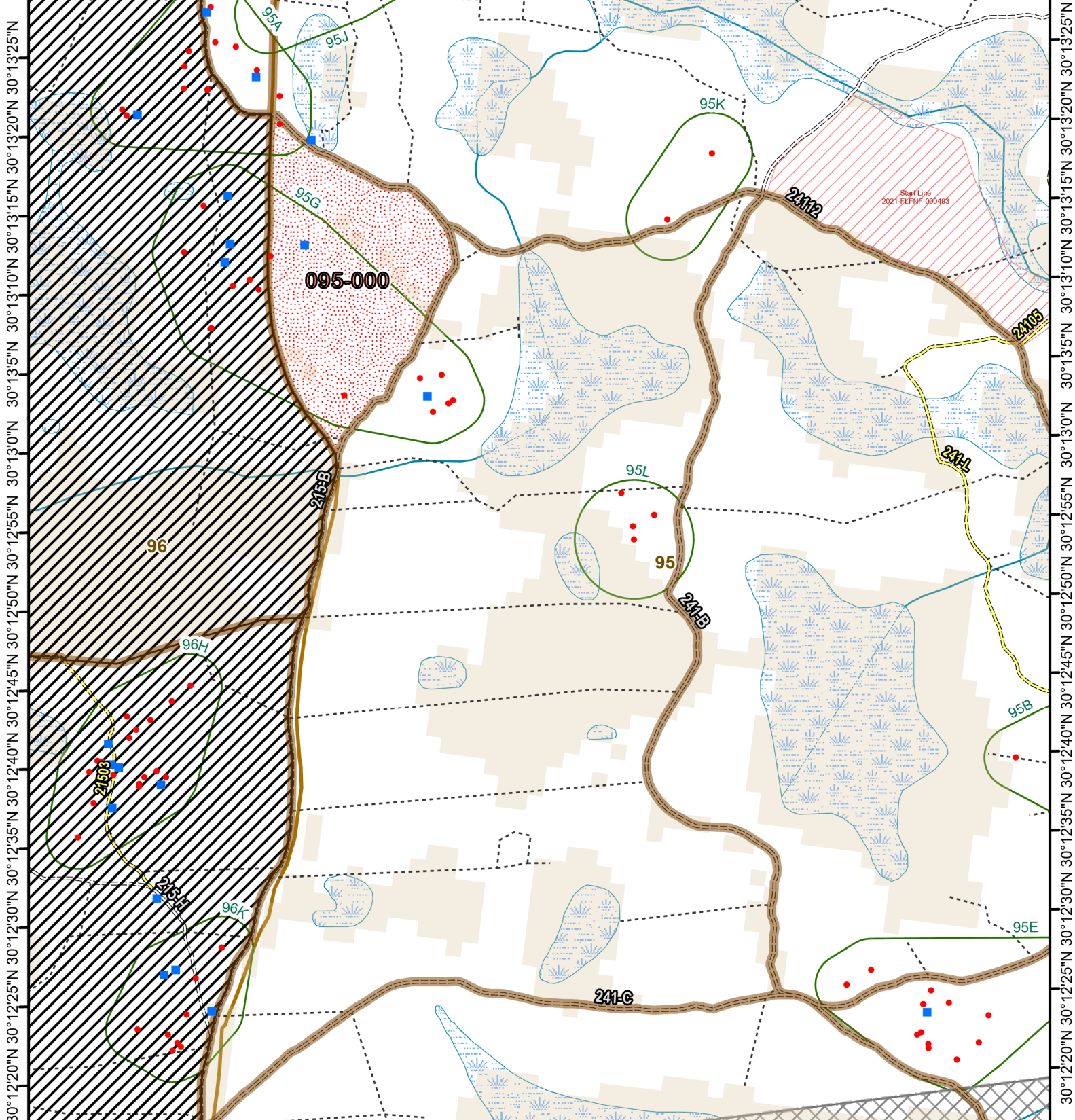




Osceola National Forest Prescribed Fire - RxBurn Map



82°29'10"W 82°29'0"W 82°28'50"W 82°28'40"W 82°28'30"W 82°28'20"W 82°28'10"W



Burn Unit: 095-000
Last Burn Date: 8/12/2005
FACTS Acres: 36
SUID: 080504PF04Y24095000



3/14/2024

- FY 24 Planned Rx Burn Unit
- FY24 Completed Rx Burn
- Burn Unit
- Burn Unit Exclusion
- Inholding
- Forest Mgt. Compartment
- Smoke Sensitive Buffer
- RCW Cluster
- RCW Tree Prep
- RCW Tree No Prep
- Wildfire 2018-2023
- Not burned 1994-2021
- Burned >=1x 1994-2021

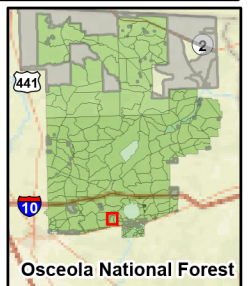
0 0.2 0.4 Miles

https://ftp.wildfire.gov/public/incident_specific_data/Fuels/FL_FNF/OSC/



Maps Lie,
Trust But Verify

1:10,000



Osceola National Forest

30°12'20"N 30°12'25"N 30°12'30"N 30°12'35"N 30°12'40"N 30°12'45"N 30°12'50"N 30°12'55"N 30°13'0"N 30°13'05"N 30°13'10"N 30°13'15"N 30°13'20"N 30°13'25"N