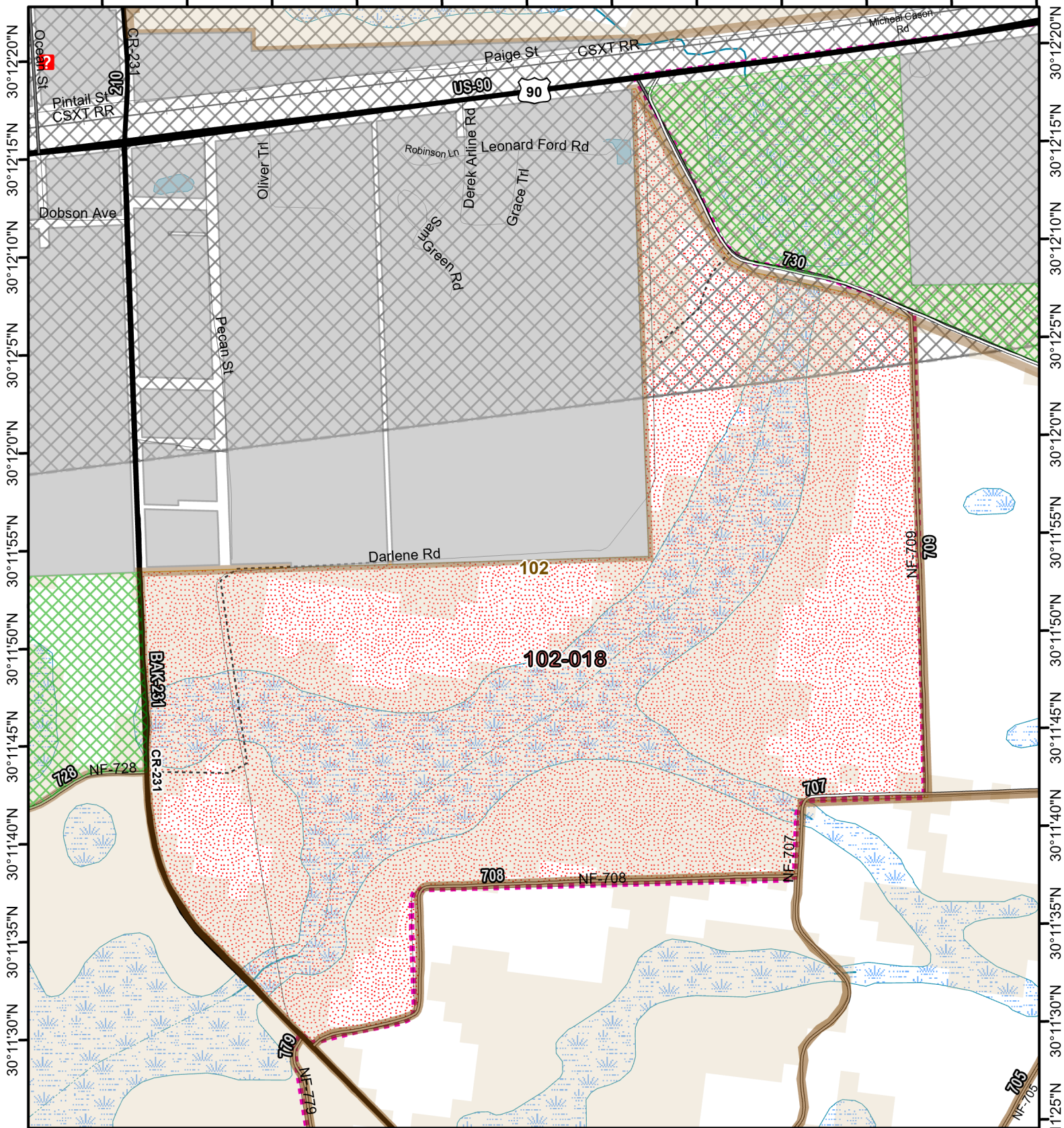




Osceola National Forest Prescribed Fire - RxBurn Map



82°25'45"W 82°25'40"W 82°25'35"W 82°25'30"W 82°25'25"W 82°25'20"W 82°25'15"W 82°25'10"W 82°25'5"W 82°25'0"W 82°24'55"W 82°24'50"W



Burn Unit: 102-018
Last Burn Date: 2/17/2010
FACTS Acres: 214
SUID: 080504PF04Y24102018



3/14/2024

- FY 24 Planned Rx Burn Unit
- Forest Mgt. Compartment
- FNS Trail
- Burn Unit
- Smoke Sensitive Buffer
- Not burned 1994-2021
- Burn Unit Exclusion
- Inholding
- Burned >=1x 1994-2021

0 0.15 0.3 Miles

https://ftp.wildfire.gov/public/incident_specific_data/Fuels/FL_FNF/OSC/



Maps Lie,
Trust But Verify
1:8,000

