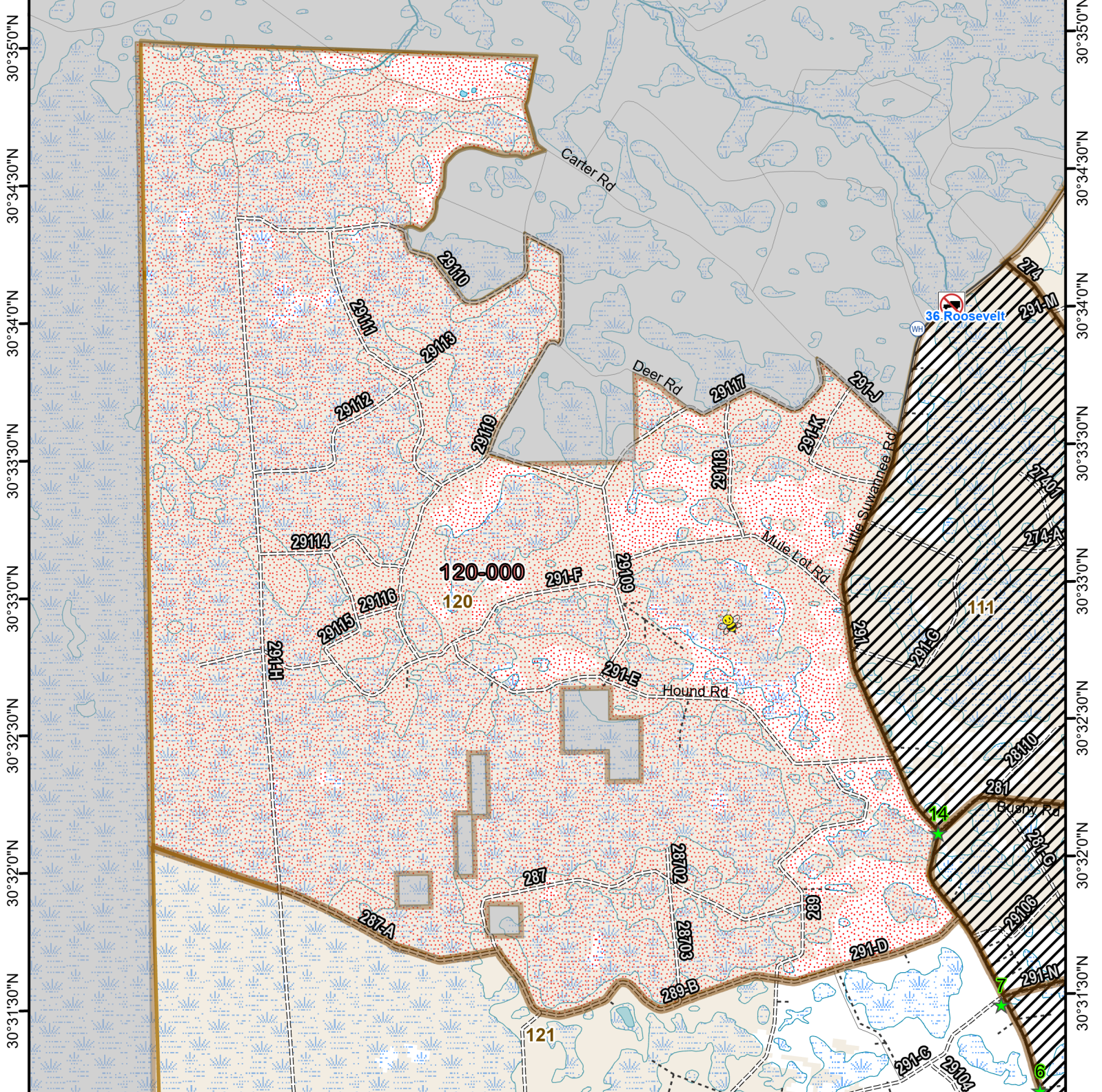




Osceola National Forest Prescribed Fire - RxBurn Map



82°37'30"W 82°37'0"W 82°36'30"W 82°36'0"W 82°35'30"W 82°35'0"W 82°34'30"W 82°34'0"W



Burn Unit: 120-000

Last Burn Date:
FACTS Acres: 5840
SUID: 080504PF04Y24120000



3/14/2024

- FY 24 Planned Rx Burn Unit
- FY24 Completed Rx Burn
- Burn Unit
- Burn Unit Exclusion
- Inholding
- Forest Mgt. Compartment
- Drop Point
- Helispot and Dipsite
- Apiary
- Bridge (3 ton)
- Not burned 1994-2021
- Burned >=1x 1994-2021

0 0.7 1.4 Miles

https://ftp.wildfire.gov/public/incident_specific_data/Fuels/FL_FNF/OSC/



Maps Lie,
Trust But Verify

1:35,000

