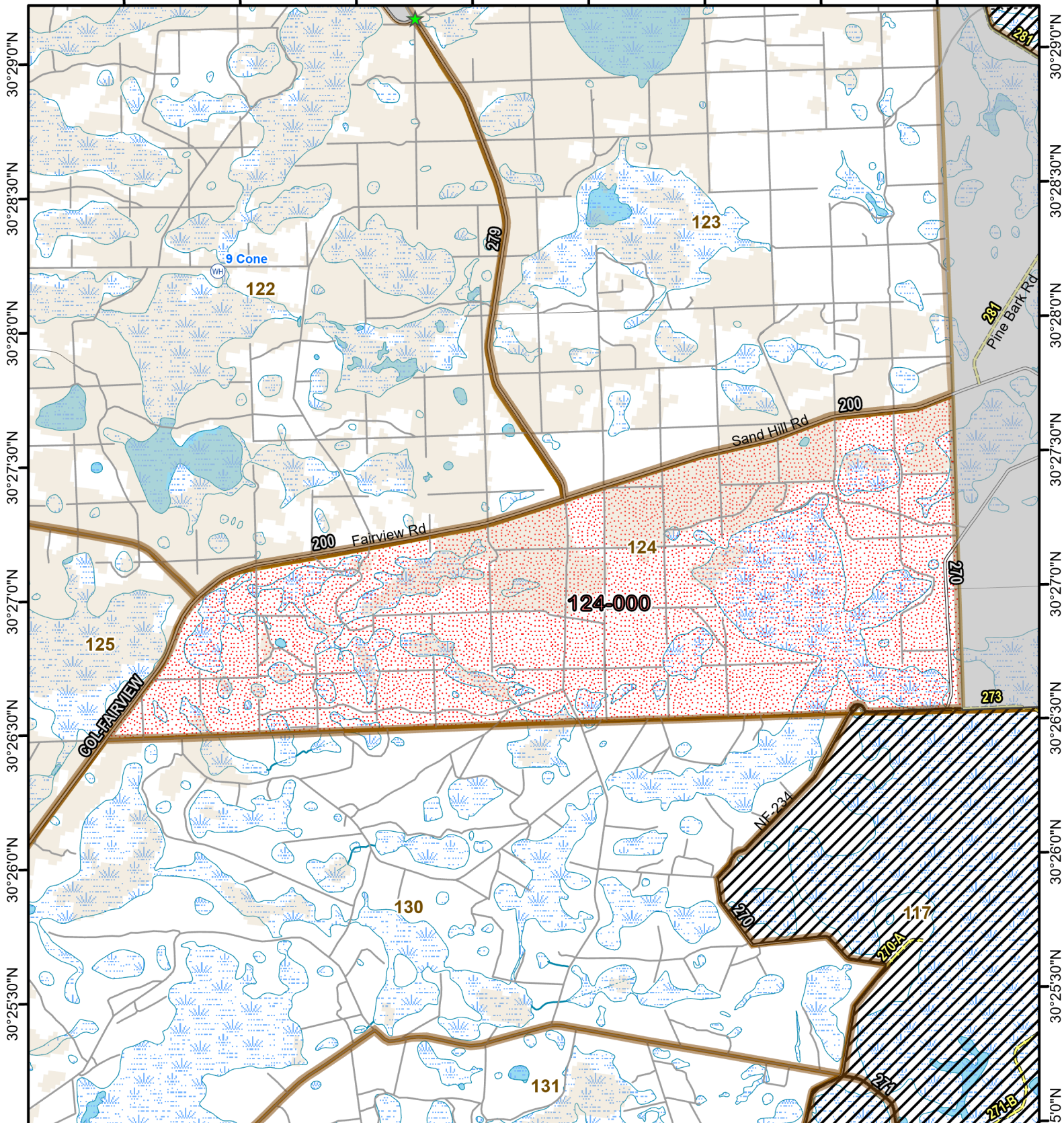




Osceola National Forest Prescribed Fire - RxBurn Map



82°33'0"W 82°32'30"W 82°32'0"W 82°31'30"W 82°31'0"W 82°30'30"W 82°30'0"W 82°29'30"W



Burn Unit: 124-000

Last Burn Date:
FACTS Acres: 2142
SUID: 080504PF04Y24124000



3/14/2024

- FY 24 Planned Rx Burn Unit
- Forest Mgt. Compartment
- FY24 Completed Rx Burn
- Drop Point
- Burn Unit
- Helispot and Dipsite
- Burn Unit Exclusion
- Not burned 1994-2021
- Inholding
- Burned >=1x 1994-2021

0 0.7 1.4 Miles

https://ftp.wildfire.gov/public/incident_specific_data/Fuels/FL_FNF/OSC/



Maps Lie,
Trust But Verify
1:35,000



30°29'0"N
30°28'30"N
30°28'0"N
30°27'30"N
30°27'0"N
30°26'30"N
30°26'0"N
30°25'30"N
30°25'0"N