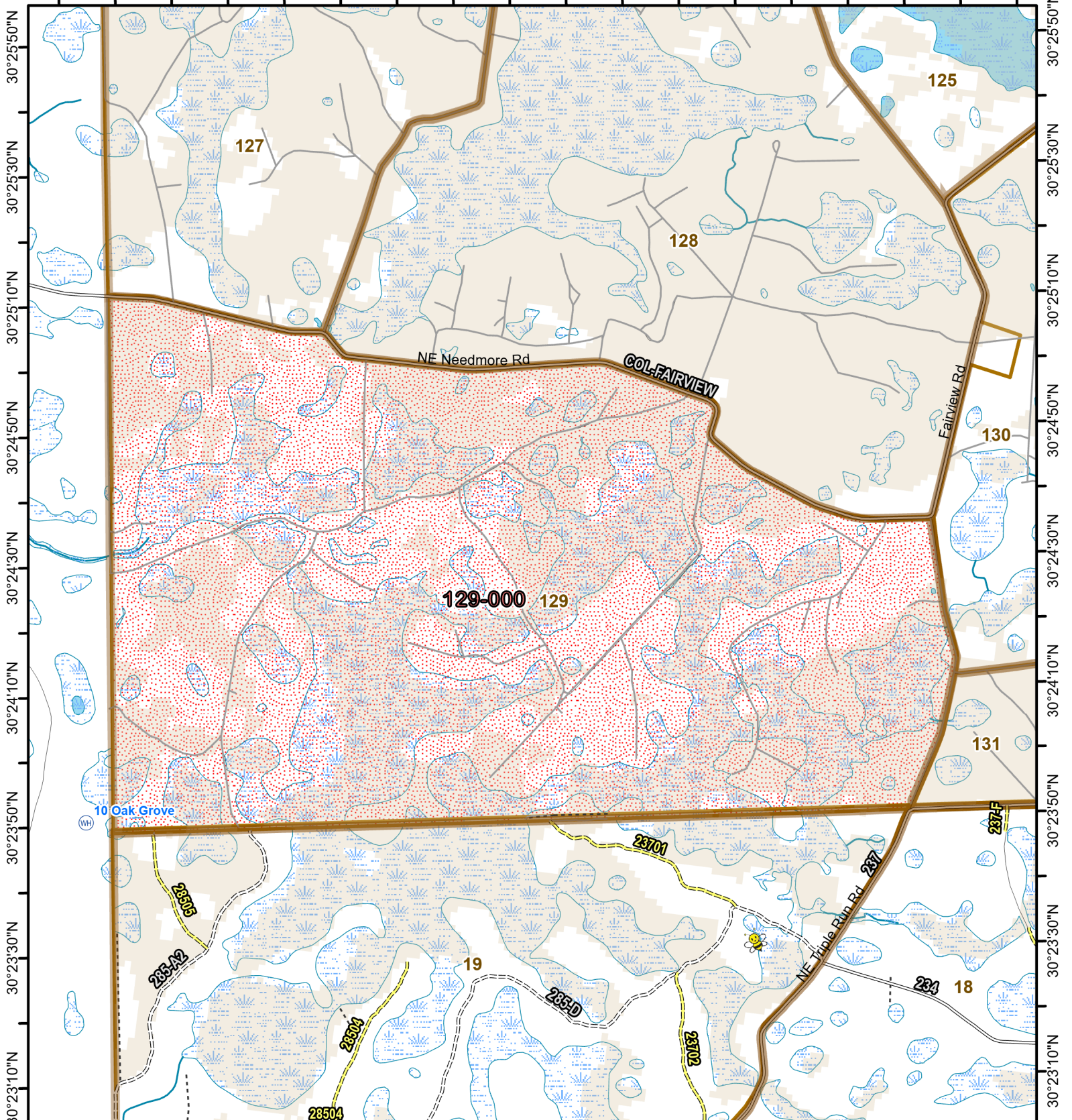




Osceola National Forest Prescribed Fire - RxBurn Map



82°36'40"W 82°36'20"W 82°36'0"W 82°35'40"W 82°35'20"W 82°35'0"W 82°34'40"W 82°34'20"W 82°34'0"W



Burn Unit: 129-000

Last Burn Date:
FACTS Acres: 1982
SUID: 080504PF04Y24129000



3/14/2024

- FY 24 Planned Rx Burn Unit
- Burn Unit
- Burn Unit Exclusion
- Inholding
- Forest Mgt. Compartment
- Helispot and Dipsite
- Apiary
- Not burned 1994-2021
- Burned >=1x 1994-2021

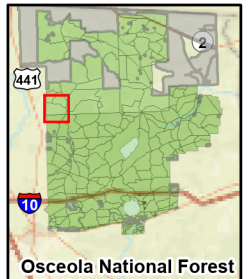
0 0.5 1 Miles

https://ftp.wildfire.gov/public/incident_specific_data/Fuels/FL_FNF/OSC/



Maps Lie,
Trust But Verify

1:24,000



Osceola National Forest