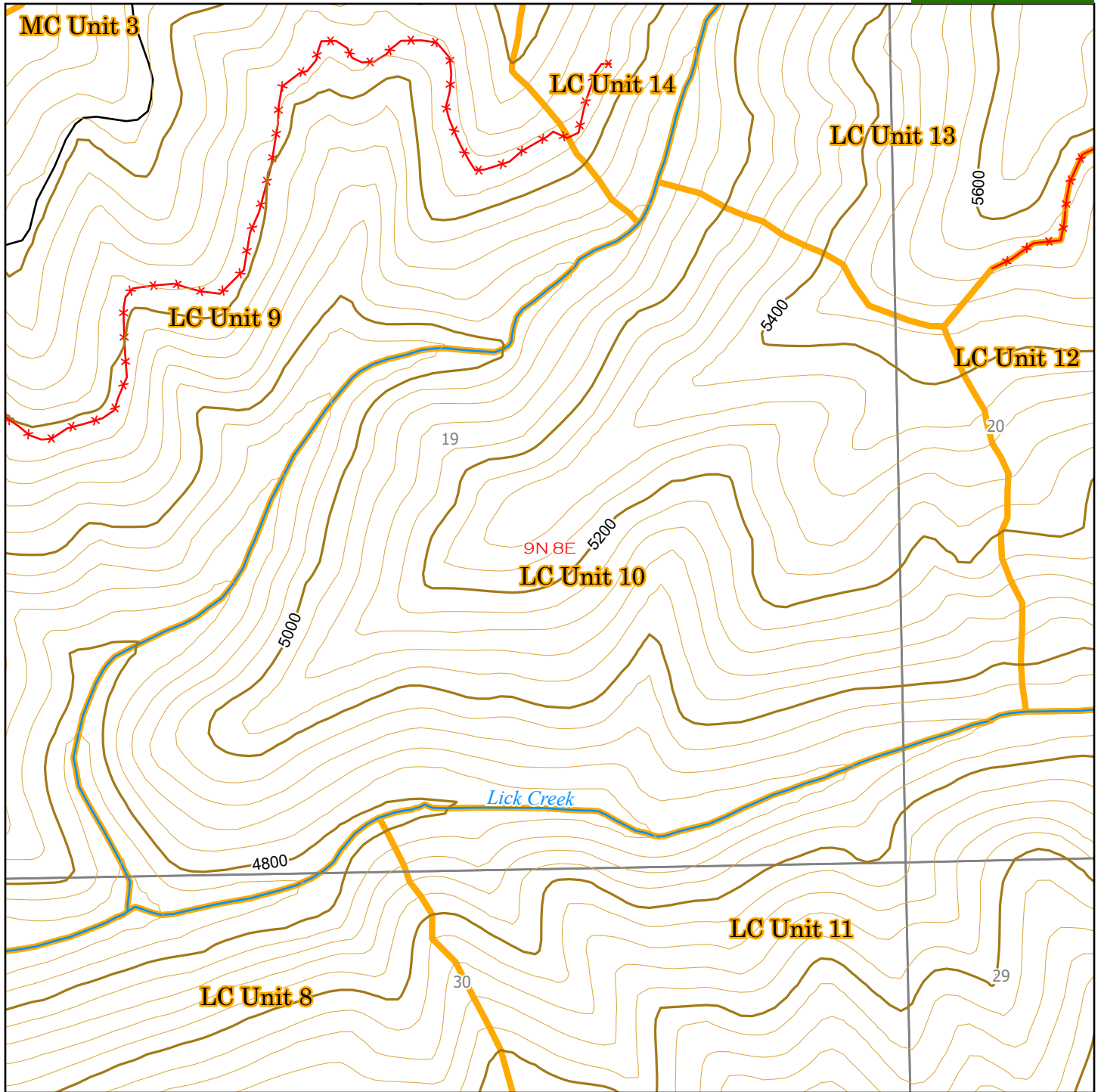





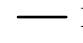


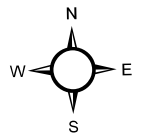
West Lowman Natural Fuels Reduction Project Area and Prescribed Burn Units.

Boise National Forest - Lowman Ranger District

Lick Creek Unit 10



-  West Lowman Project Boundary Roads
-  Pioneer Fire 2016
-  Prescribed Burn Units
-  Perennial Stream/River
-  ML1 (Closed)
-  ML2 and Up



0 0.1 0.2 0.25 0.3 0.4 0