

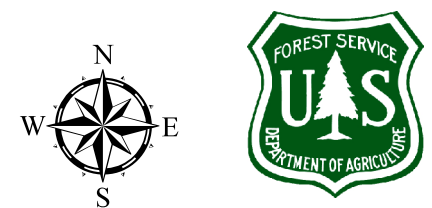
A6, B6.412 Lower stump height:  
Cut stumps as low to the ground as practicable  
(6 to 8 inch stump height) for a distance of  
25 feet from Trail 32.

**HAZARD REDUCTION AND  
SITE PREPARATION PLAN  
C6.7**

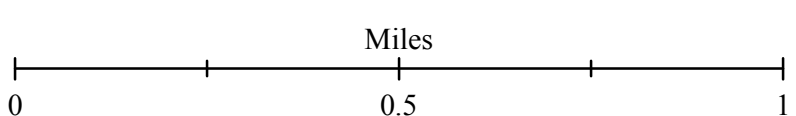
Cutting Unit Number	Acres	Skidding and Yarding Specified, B6.42	Designation Method
15C	31	Skyline, C6.4#	Species Designation, C2.38#
15D	6	Skyline, C6.4#	Species Designation, C2.38#
15E	6	Skyline, C6.4#	Species Designation, C2.38#
15F	16	Skyline, C6.4#	Species Designation, C2.38#
15G	19	Tractor, C6.4#	Species Designation, C2.38#
16	62	Skyline, C6.4#	Species Designation, C2.38#
16A	45	Skyline, C6.4#	Species Designation, C2.38#
18	33	Skyline, C6.4#	Species Designation, C2.38#
19	100	Tractor, C6.4#	Species Designation, C2.38#
19B	14	Skyline, C6.4#	Species Designation, C2.38#
19C	7	Skyline, C6.4#	Species Designation, C2.38#
19D	25	Skyline, C6.4#	Species Designation, C2.38#
21	19	Skyline, C6.4#	Species Designation, C2.38#
21A	13	Tractor, C6.4#	Species Designation, C2.38#
83	11	Skyline, C6.4#	Species Designation, C2.38#
84	19	Skyline, C6.4#	Species Designation, C2.38#
85	127	Tractor, C6.4#	Species Designation, C2.38#
86	32	Skyline, C6.4#	Species Designation, C2.38#
87	13	Skyline, C6.4#	Species Designation, C2.38#
88	9	Tractor, C6.4#	Species Designation, C2.38#
89	7	Skyline, C6.4#	Species Designation, C2.38#

Hand Fireline	Hand Fuelbreaks	Landing Cleanup	Excavator Piling	Fell Damaged Residuals	Whole Tree Yard	Leave Tree Protection
X	X	X			X	X
	X	X			X	
	X	X			X	
X	X	X			X	
X	X	X	X		X	
		X			X	
		X			X	
X	X	X			X	
		X	X	X	X	
X	X	X			X	
		X	X		X	
X	X	X			X	
X	X	X			X	
X	X	X			X	
X	X	X			X	

**Grassy Elk Timber Sale  
Coeur d'Alene River Ranger District  
Idaho Panhandle National Forests  
Sale Area, Hazard Reduction,  
and Site Preparation Map**



Scale = 1:15,840  
40ft Contours

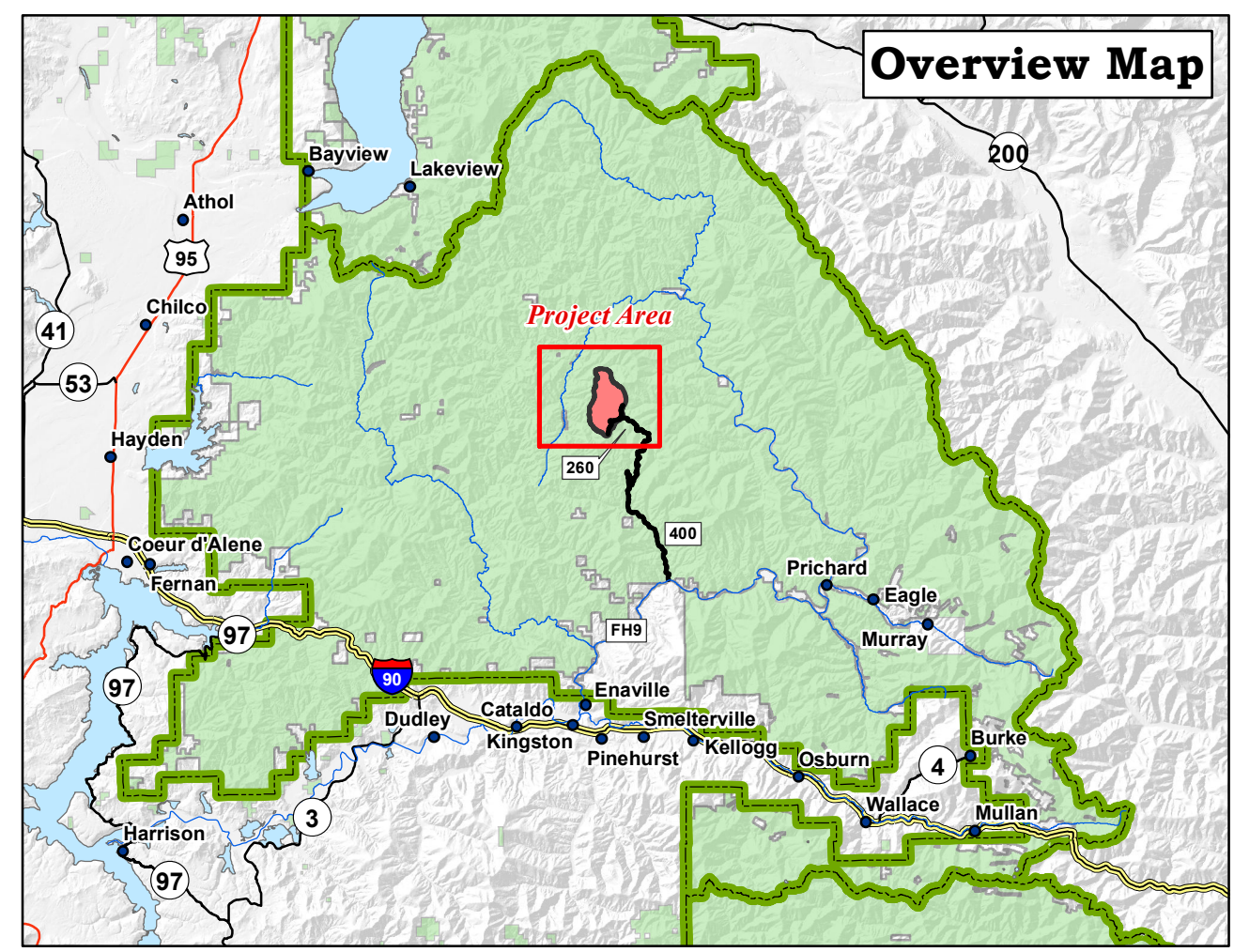


All Land Lines Approximate  
Created by O. Tempest 5/20/2021

**Legend**

- Sale Area Boundary, B1.1
- Road Number
- Existing Transportation System, B5.12, B6.22
- Specified Road Reconstruction, A.7, B5.2, B6.22
- Public Use Restricted, B5.12, C5.12#
- Hauling Restricted, B5.12, C5.12#
- Limited Operating Period, C6.316#
- Keep Road or Trail Open, B6.22
- Haul is Prohibited, B5.12, C5.12#
- Unsuitable for Hauling Prior to Completion of Agreed Reconstruction, B5.12, C5.12#
- To Be Closed, C5.41#
- Cutting Unit, B1.1, B2.3
- Traffic Control Devices, B6.33
- Closure to Use by Others, Gate, C5.41# (To be Closed), B6.22
- Protect Streamcourse, B6.5
- Dust Abatement Water Source, B6.22
- Hand Fireline Construction, C6.7
- Protect Improvement (Trail), B6.22

- Other than National Forest Ownership
- Land Administered by National Forest



All units - Pile Landings (landing cleanup), C6.7