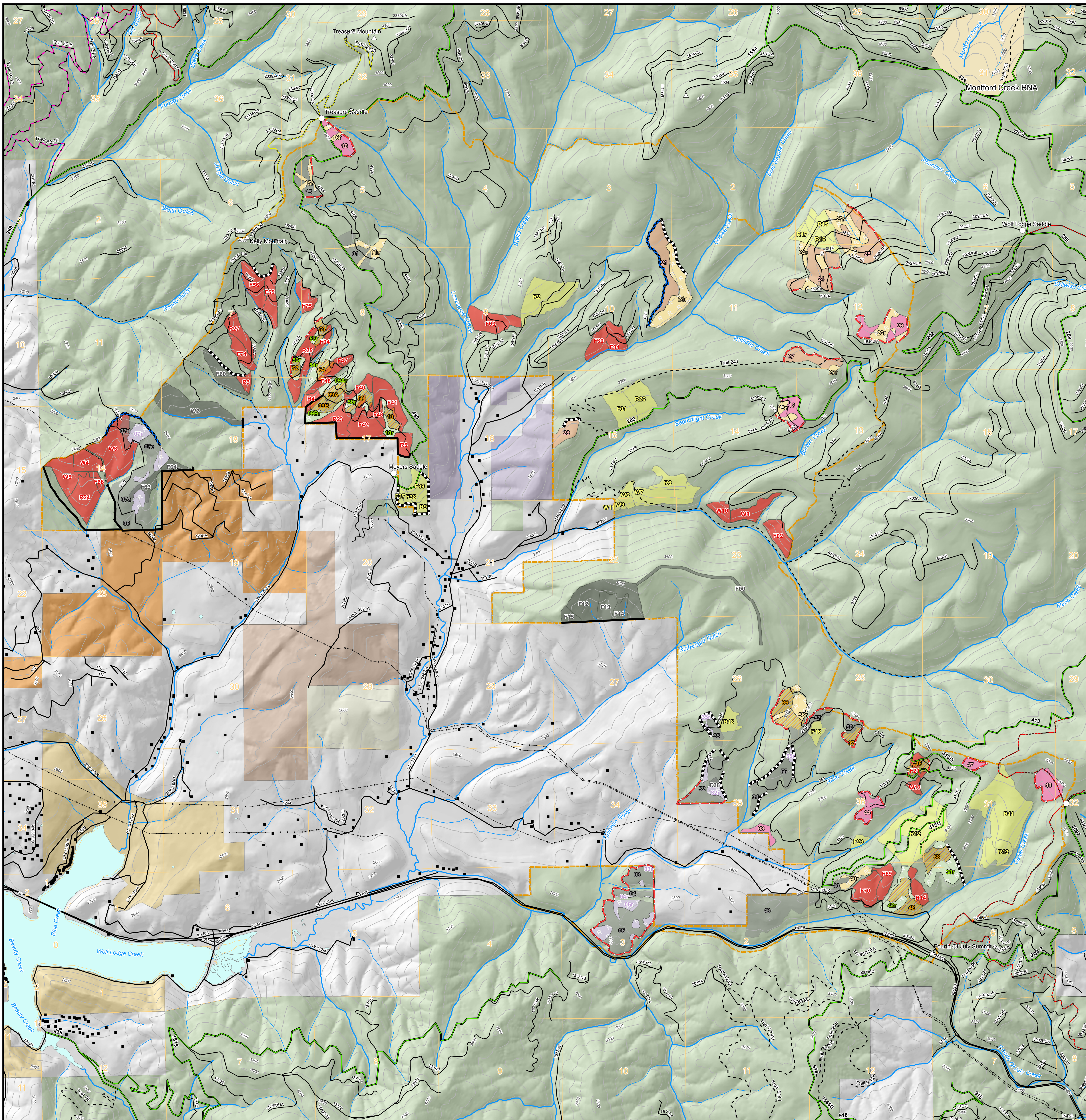
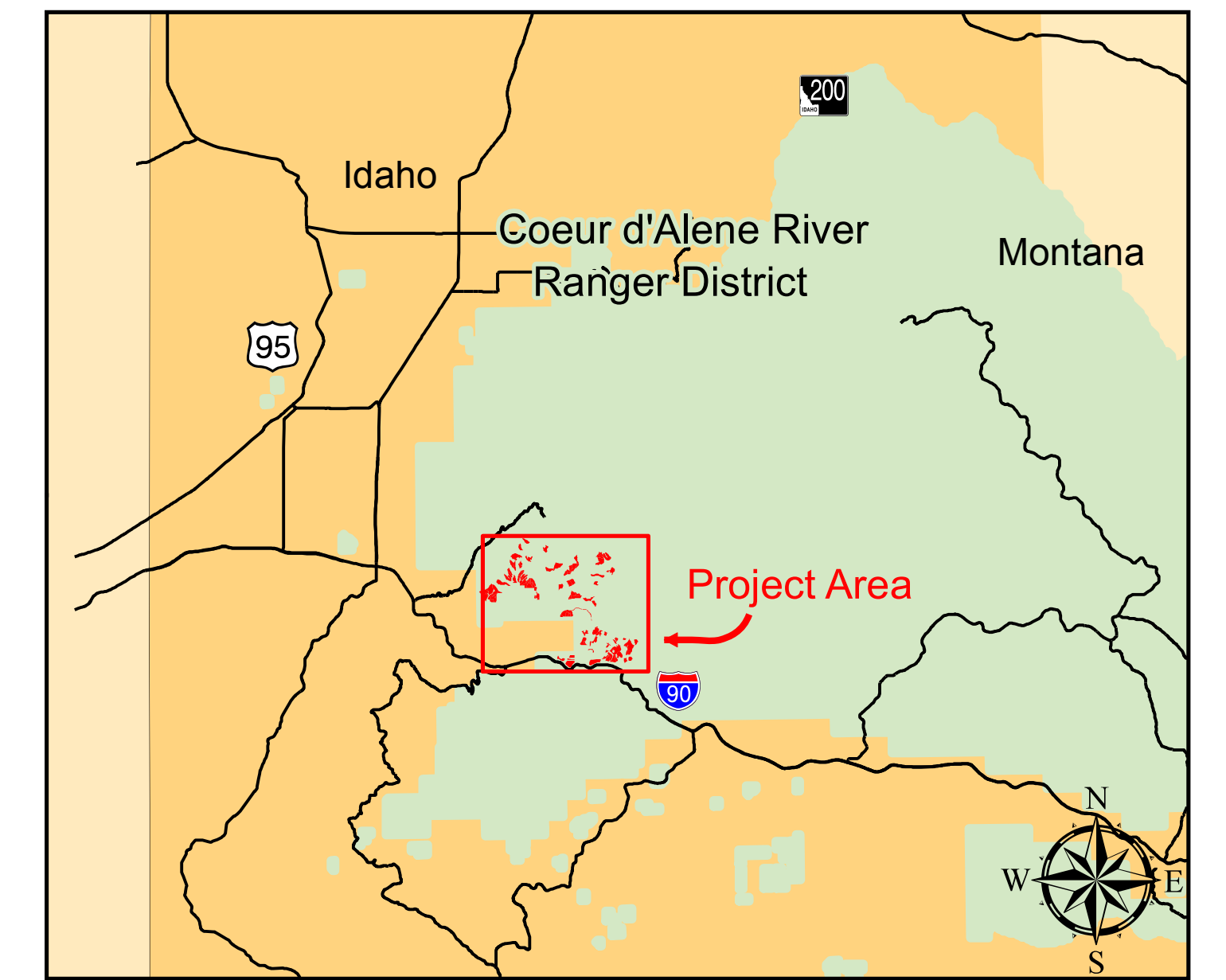


# Blue Alder Prescribed Fire, 2014

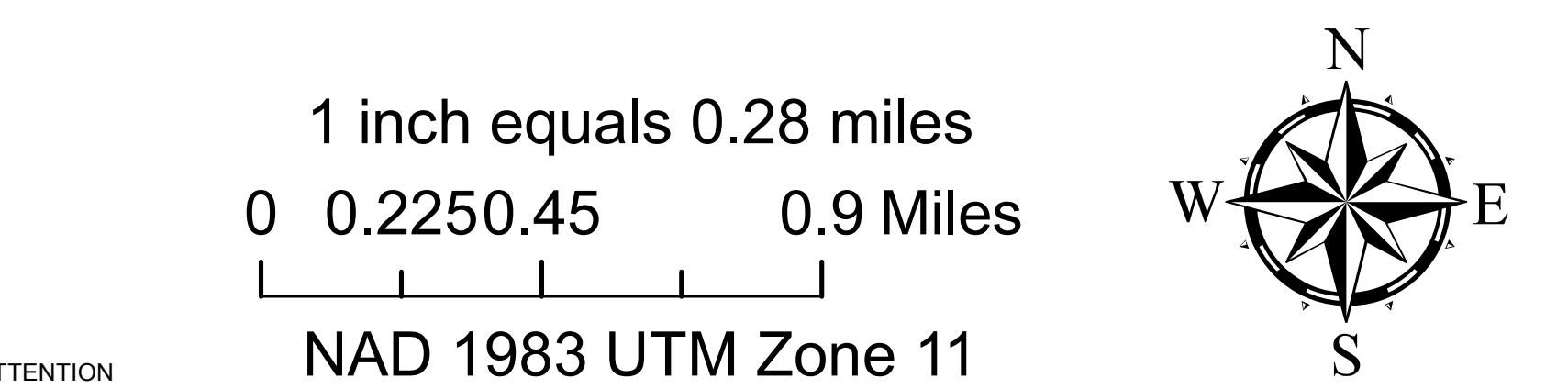
Coeur d'Alene River Ranger District  
Idaho Panhandle National Forest



- Structure (Kootenai County)
  - Powerline or Gasline
  - ▭ Blue Alder Project Area
  - Fireline**
  - FS WFHF - Complete
  - - - FS WFHF
  - - - Purchaser
  - - - Desig. LF Trail
  - HARVEST UNITS**
  - Accomplished
  - ▨ FY14
  - ▨ Out Year
  - ▨ Out Year, Cx Brush Disposal
  - RETENTION UNITS**
  - Accomplished
  - ▨ FY14
  - ▨ Out Year
  - FUELS/WILDLIFE/REHAB UNITS**
  - Accomplished
  - ▨ FY14
  - ▨ Out Year
- | Ownership |                           |
|-----------|---------------------------|
| ▨         | Adjacent NF               |
| ▨         | BLM                       |
| ▨         | City                      |
| ▨         | Forest Capital Land       |
| ▨         | Indian Reservation Land   |
| ▨         | NF Land                   |
| ▨         | Potlatch Corporation Land |
| ▨         | Private Ownership         |
| ▨         | Special Interest Area     |
| ▨         | State Land                |
| ▨         | State Park                |
| ▨         | Stimson Lumber Co Land    |
| ▨         | Wildlife Mangement Areas  |

W= Wildlife Burn  
R= Rehab Burn  
F= Fuels Burn  
r= Retention Unit

- ROAD DESIGNATION**
- ROADS OPEN TO ALL MOTORIZED USE
- ROADS OPEN TO ALL MOTORIZED USE (MEMORIAL DAY THRU LABOR DAY WEEKENDS)
- TRAILS OPEN TO 4WD MOTORIZED USE
- TRAILS OPEN TO 4WD USE (APRIL 1ST THRU LABOR DAY WEEKEND)
- TRAILS OPEN TO ATV MOTORIZED USE
- TRAILS OPEN TO ATV USE (APRIL 1ST THRU LABOR DAY WEEKEND)
- TRAILS OPEN TO MOTORCYCLE USE
- TRAILS DESIGNATED FOR NONMOTORIZED USE
- ROADS RESTRICTED TO ADMINISTRATIVE USE
- NON FOREST SERVICE DESIGNATION



ATTENTION  
This product is reproduced from geospatial information prepared by the U.S. Department of Agriculture, Forest Service. GIS data and product accuracy may vary. They may be developed from sources of differing accuracy, accurate only at certain scales, based on modeling or interpretation, incomplete while being created or revised, etc. Using GIS products for purposes other than those for which they were created, may yield inaccurate or misleading results. This information was released on 03/01/12. The Forest Service reserves the right to correct, update, modify, or replace, GIS products without notification. For more information, contact Coeur d'Alene River Ranger District: 208-864-2318.