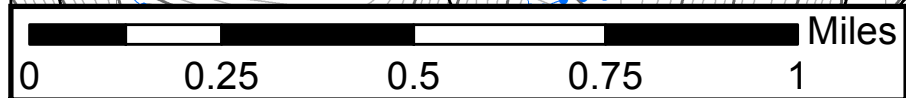
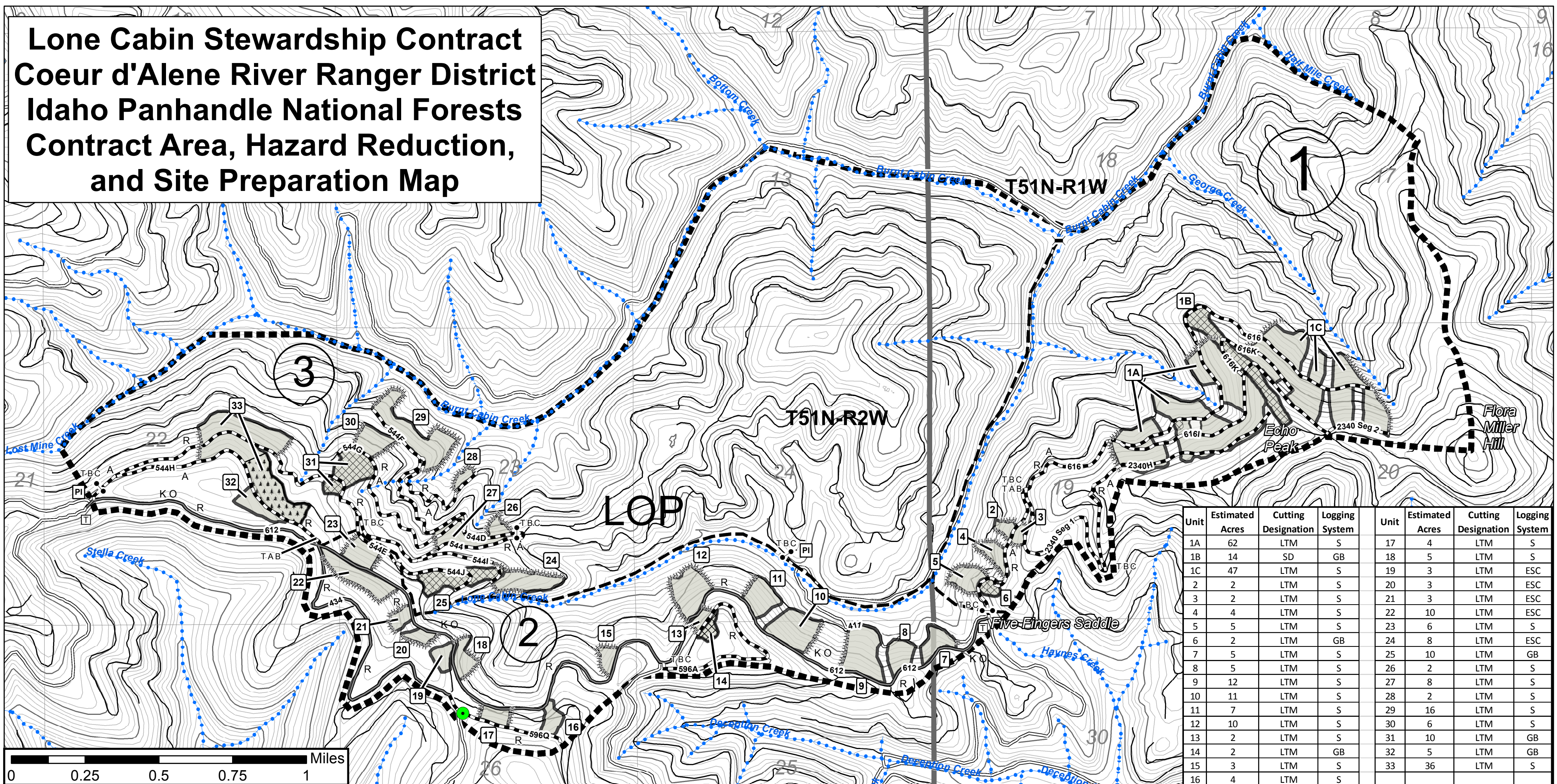


Lone Cabin Stewardship Contract Coeur d'Alene River Ranger District Idaho Panhandle National Forests Contract Area, Hazard Reduction, and Site Preparation Map



Unit	Estimated Acres	Cutting Designation	Logging System	Unit	Estimated Acres	Cutting Designation	Logging System
1A	62	LTM	S	17	4	LTM	S
1B	14	SD	GB	18	5	LTM	S
1C	47	LTM	S	19	3	LTM	ESC
2	2	LTM	S	20	3	LTM	ESC
3	2	LTM	S	21	3	LTM	ESC
4	4	LTM	S	22	10	LTM	ESC
5	5	LTM	S	23	6	LTM	S
6	2	LTM	GB	24	8	LTM	ESC
7	5	LTM	S	25	10	LTM	GB
8	5	LTM	S	26	2	LTM	S
9	12	LTM	S	27	8	LTM	S
10	11	LTM	S	28	2	LTM	S
11	7	LTM	S	29	16	LTM	S
12	10	LTM	S	30	6	LTM	S
13	2	LTM	S	31	10	LTM	GB
14	2	LTM	GB	32	5	LTM	GB
15	3	LTM	S	33	36	LTM	S
16	4	LTM	S				

- ### Legend
- Contract Area Boundary, B.1
 - Subdivisions, B.1
 - 612 Road Number
 - Existing Transportation System, F.1.2, G.2.2
 - Specified Road Reconstruction, A.7, F.2
 - Reconditioning of Existing Roads, K-F.3.1.2#
 - Administrative Road, F.1.2, G.2.2
 - Closure to Use by Others, Gate, K-F.4.1# (To be Closed)
 - Individual Leave Tree Mark Units, C.3.5, K-C.3.5.8#
 - Species Designation Units, C.3.5, K-C.3.8#
 - Escaliner Yarding Specified, G.4.2, K-G.4#
 - Ground Based Yarding Specified, G.4.2, K-G.4#
 - Skyline Yarding Specified, G.4.2, K-G.4#
 - Keep Open, G.2.2
 - Hauling Restricted, K-F.1.2#
 - Public Use Restricted, K-F.1.2#
 - Temporary Activity Barricades, K-F.4.1#

- To Be Closed, K-F.4.1#
 - Limited Operating Period, K-G.3.1.6#
 - Traffic Control Devices
 - Protect Improvement, G.2.2
 - Bridge, Protected Improvement, G.2.2
 - Protect Streamcourse, G.5
 - Land Administered by National Forest
 - Site Specific Protection Measures, K-G.2.4#
 - Grapple Pile, K-G.7#
 - Masticate, K-G.7#
- | | |
|--|----------------------|
| 1B, 1C, 5, 8, 9, 10, 11, 15, 16, 17, 18, 19, | Whole Tree Yarding |
| 20, 21, 22, 23, 24, 25, 28, 29, 30, 31, 32, 33 | K-G.4# |
| 1B, 1C, 5, 8, 9, 10, 11, 15, 16, 17, 18, 19, | Limb and Top Removal |
| 20, 21, 22, 23, 24, 25, 28, 29, 30, 31, 32, 33 | K-G.7# |
| 1A, 2, 3, 4, 6, 7, 12, 13, 14, 26, 27 | Leave Tops, K-G.7# |
- Hand Fireline Construction, K-G.7#
 - All units - Pile Landings (landing cleanup), K-G.7#

