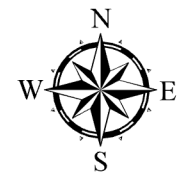
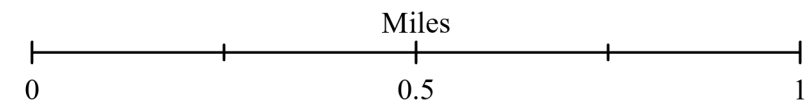


Cedar Creek Salvage Timber Sale Coeur d'Alene River Ranger District Idaho Panhandle National Forests Sale Area, Hazard Reduction, and Site Preparation Map



Scale: 1:15,840
40ft Contours

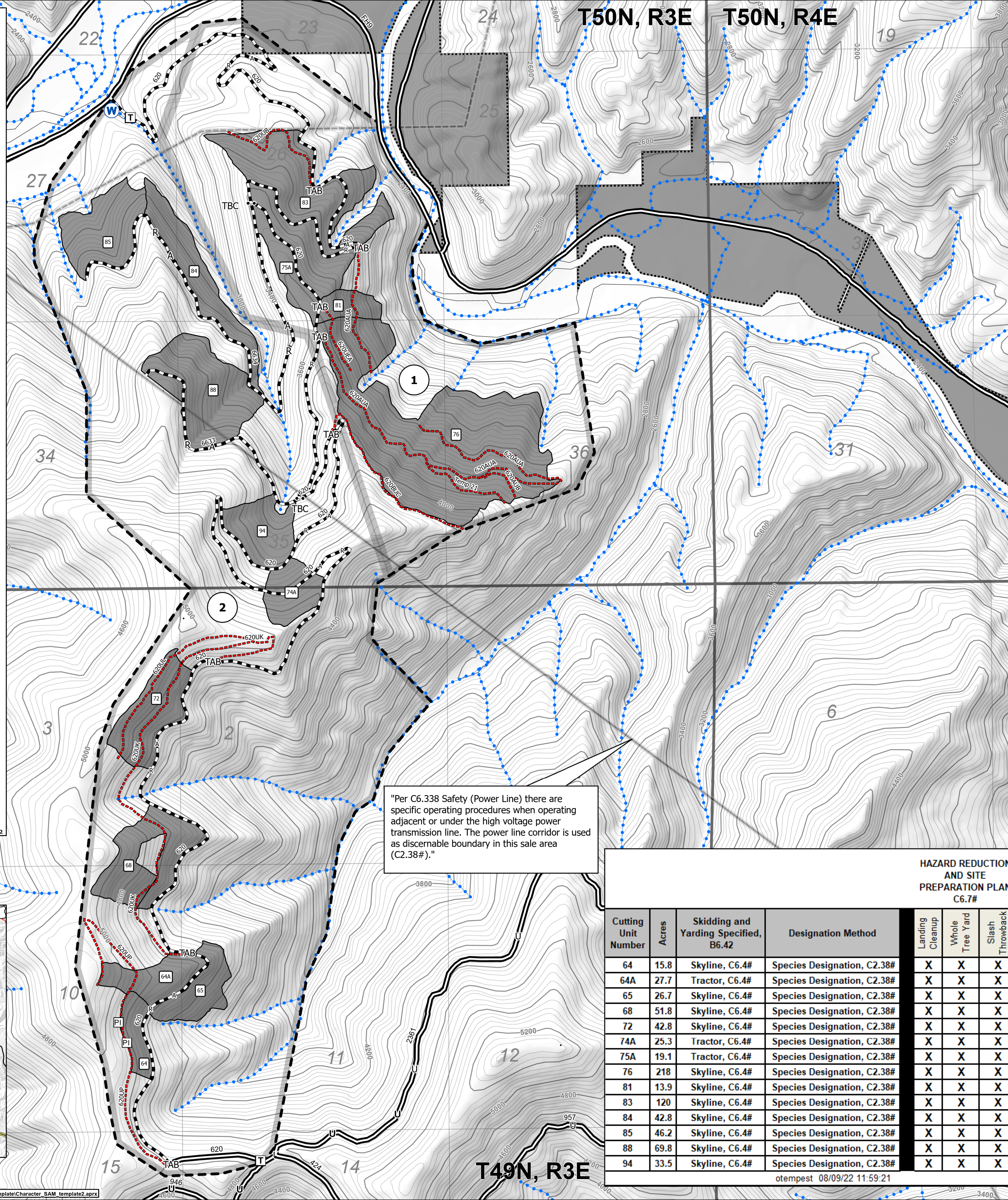


All Land Lines Approximate

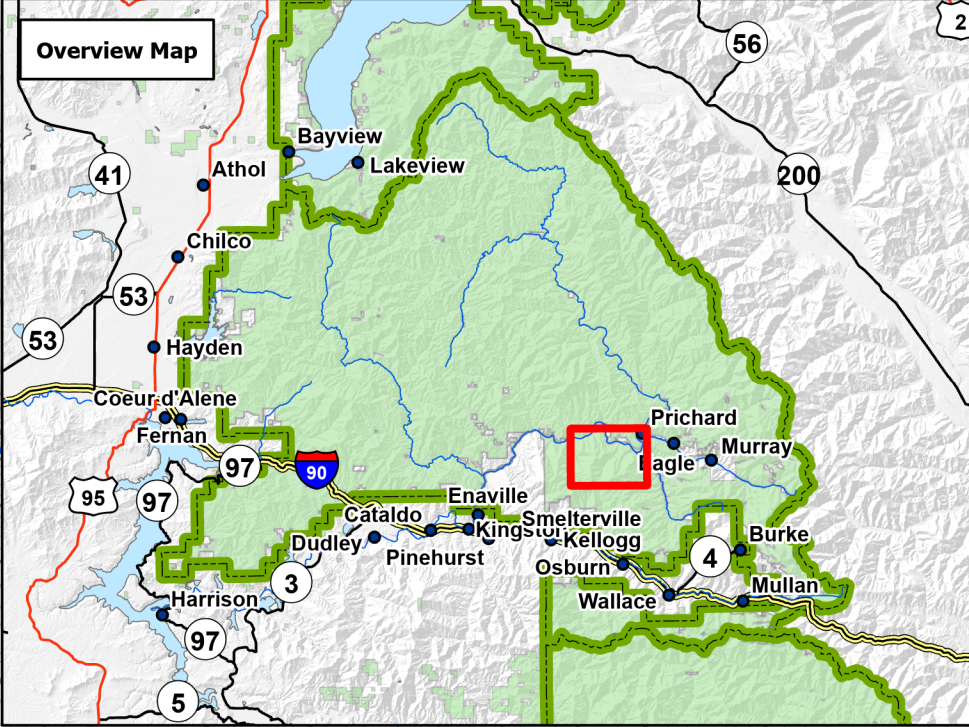
Legend

- Subdivision, B1.1
- Sale Area Boundary, B1.1
- Cutting Unit, B1.1, B2.3
- 422 Road Number
- Existing Transportation System, B5.12, B6.22
- Specified Road Reconstruction, A.7, B5.2, B6.22
- Temporary Road Construction, B6.631, C5.102#
- Protect Improvement (Avista Transmission Line), C6.338
- Protect Improvement (BPA Transmission Line), C6.338
- Protect Streamcourse, B6.5
- Gate, C5.41#
- TBC To Be Closed, C5.41#
- T Traffic Control Devices, B6.33
- PI Protect Improvement (Claim Marker), B6.22
- W Dust Abatement Water Source, C5.31#, B6.22
- A A A Public Use Restricted, B5.12, C5.12#
- R R R Hauling Restricted, B5.12, C5.12#
- TAB Temporary Activity Barricades, C5.41#
- U U U Unsuitable for Hauling, B5.12, C5.12#
- Other than National Forest Ownership
- Land Administered by National Forest

Created by D. Gates 8/23/2022



"Per C6.338 Safety (Power Line) there are specific operating procedures when operating adjacent or under the high voltage power transmission line. The power line corridor is used as discernable boundary in this sale area (C2.38#)."



Cutting Unit Number	Acres	Skidding and Yarding Specified, B6.42	Designation Method	HAZARD REDUCTION AND SITE PREPARATION PLAN C6.7#		
				Landing Cleanup	Whole Tree Yard	Slash Throwback
64	15.8	Skyline, C6.4#	Species Designation, C2.38#	X	X	X
64A	27.7	Tractor, C6.4#	Species Designation, C2.38#	X	X	X
65	26.7	Skyline, C6.4#	Species Designation, C2.38#	X	X	X
68	51.8	Skyline, C6.4#	Species Designation, C2.38#	X	X	X
72	42.8	Skyline, C6.4#	Species Designation, C2.38#	X	X	X
74A	25.3	Tractor, C6.4#	Species Designation, C2.38#	X	X	X
75A	19.1	Tractor, C6.4#	Species Designation, C2.38#	X	X	X
76	218	Skyline, C6.4#	Species Designation, C2.38#	X	X	X
81	13.9	Skyline, C6.4#	Species Designation, C2.38#	X	X	X
83	120	Skyline, C6.4#	Species Designation, C2.38#	X	X	X
84	42.8	Skyline, C6.4#	Species Designation, C2.38#	X	X	X
85	46.2	Skyline, C6.4#	Species Designation, C2.38#	X	X	X
88	69.8	Skyline, C6.4#	Species Designation, C2.38#	X	X	X
94	33.5	Skyline, C6.4#	Species Designation, C2.38#	X	X	X

Unit #	Designated Species	Maximum Stump Diameter - (Inches)
64	GF, WH, ES, LP	N/A
	DF	24"
64A	WRC, AF, WL, WP, PP	LEAVE ALL
	GF, WH, ES, LP	N/A
64A	DF	27"
	WRC, AF, WL, WP, PP	LEAVE ALL
65	WH, ES, AF, LP	N/A
	DF	29"
	GF	24"
	WRC	28"
65	WL, WP, PP	LEAVE ALL
	WRC, ES, LP	N/A
68	DF	21"
	GF	31"
	WH	28"
	WL, WP, PP, AF	LEAVE ALL
72	WH, AF, ES, LP	N/A
	DF	19"
	WRC	17"
	GF	31"
72	WL, WP, PP	LEAVE ALL
	AF, ES, LP	N/A
74A	WRC	35"
	DF	33"
	GF	41"
	WH	39"
74A	WL, WP, PP	LEAVE ALL
	AF, ES, LP, DF, WH, GF	N/A
75A	WRC, WL, WP, PP	LEAVE ALL
	AF, ES, LP	N/A
76	WRC	21"
	DF	19"
	GF	31"
	WH	28"
76	WL, WP, PP	LEAVE ALL
	AF, ES, LP	N/A
81	WRC	28"
	DF	24"
	GF	37"
	WH	34"
81	WL, WP, PP	LEAVE ALL
	AF, ES, LP	N/A
83	DF	19"
	WRC	17"
	GF	37"
	WH	34"
83	WL, WP, PP	LEAVE ALL
	AF, ES, LP	N/A
84	WRC	28"
	DF	24"
	GF	31"
	WH	34"
84	WL, WP, PP	LEAVE ALL
	AF, ES, LP	N/A
85	WRC	28"
	DF	24"
	GF	37"
	WH	34"
85	WL, WP, PP	LEAVE ALL
	AF, ES, LP	N/A
88	DF	24"
	GF	31"
	WH	34"
	WRC, WL, WP, PP	LEAVE ALL
88	AF, ES, LP	N/A
	WRC	34"
94	DF	29"
	GF	37"
	WH	34"
	WL, WP, PP	LEAVE ALL

otempest 08/09/22 11:59:21