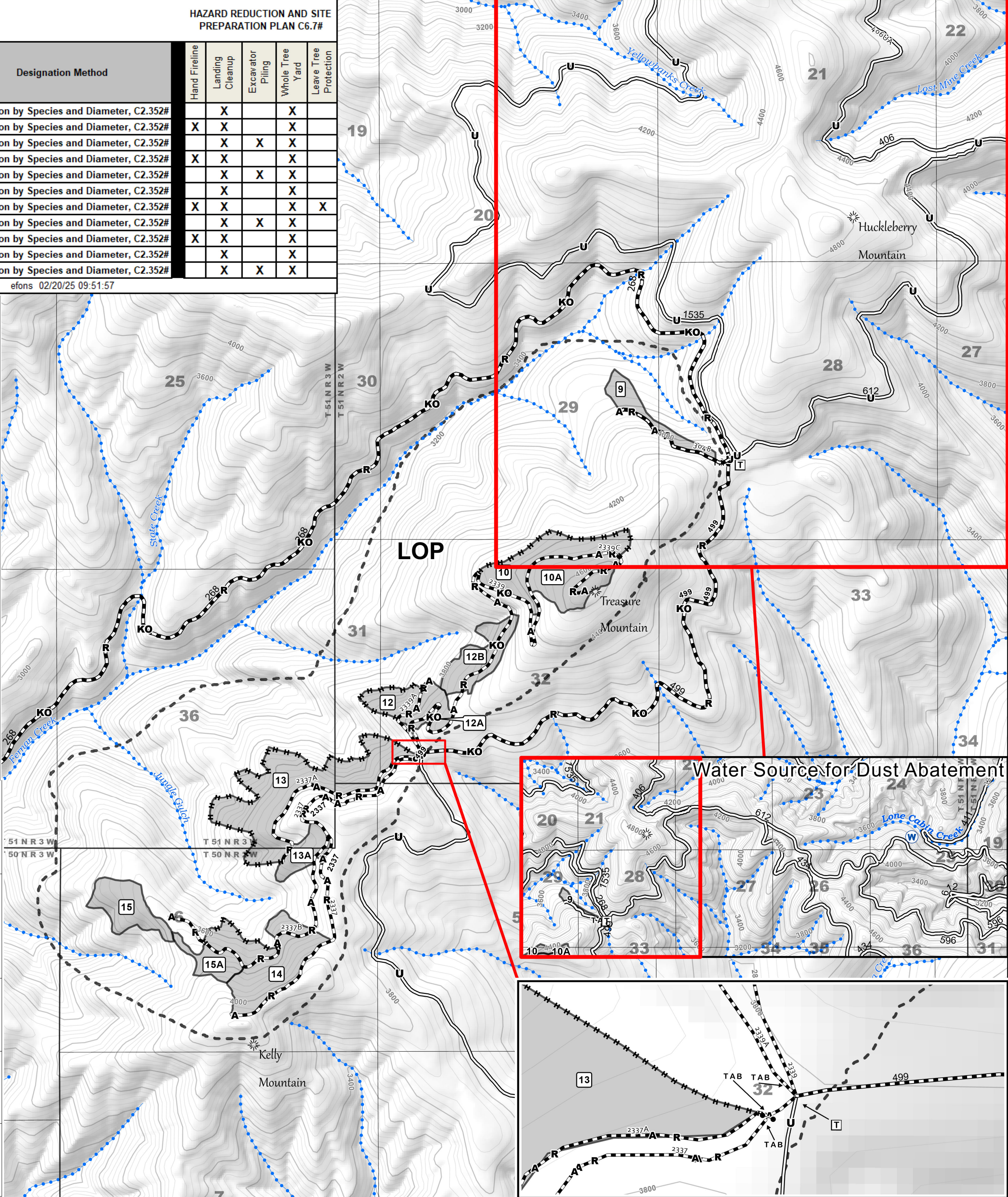


HAZARD REDUCTION AND SITE PREPARATION PLAN C6.7#						
Cutting Unit Number	Acres	Skidding and Yarding Specified, B6.42	Designation Method	Hand Fireline	Landing Cleanup	Excavator Piling
9	13	Skyline, C6.4#	Designation by Species and Diameter, C2.352#		X	
10	32	Skyline, C6.4#	Designation by Species and Diameter, C2.352#	X	X	
10A	29	Tractor, C6.4#	Designation by Species and Diameter, C2.352#		X	X
12	12	Skyline, C6.4#	Designation by Species and Diameter, C2.352#	X	X	
12A	13	Tractor, C6.4#	Designation by Species and Diameter, C2.352#		X	X
12B	23	Skyline, C6.4#	Designation by Species and Diameter, C2.352#		X	
13	72	Skyline, C6.4#	Designation by Species and Diameter, C2.352#	X	X	
13A	12	Tractor, C6.4#	Designation by Species and Diameter, C2.352#		X	X
14	48	Tractor, C6.4#	Designation by Species and Diameter, C2.352#	X	X	
15	22	Skyline, C6.4#	Designation by Species and Diameter, C2.352#		X	
15A	11	Tractor, C6.4#	Designation by Species and Diameter, C2.352#		X	X
efons 02/20/25 09:51:57						

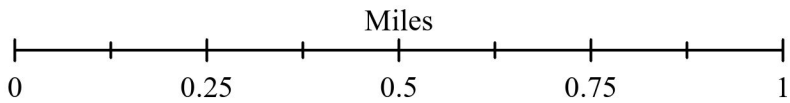
Unit	Designated Species	Maximum Stump Diameter (Inches)
9	WL, WP and PP will be designated for retention unless otherwise marked. Cut all DF, GF, WH, AF, LP, ES, WRC unless otherwise marked.	Cut All GF<32" & WRC <30" unless otherwise marked
10	Cut all GF, WH, AF, LP, ES, WL, WP and PP will be designated for retention unless otherwise marked. Cut all DF, GF, WH, AF, LP, ES, WRC unless otherwise marked. WRC unless otherwise marked.	Cut All WRC <30" unless otherwise marked
10A	WL, WP and PP will be designated for retention unless otherwise marked. Cut all DF, GF, WH, AF, LP, ES, WRC unless otherwise marked.	Cut All WRC <30" unless otherwise marked
12	WL, WP and PP will be designated for retention unless otherwise marked. Cut all DF, GF, WH, AF, LP, ES, WRC unless otherwise marked.	Cut All GF<32" & WRC <30" unless otherwise marked
12A	WL, WP and PP will be designated for retention unless otherwise marked. Cut all DF, GF, WH, AF, LP, ES, WRC unless otherwise marked.	Cut All GF<32" & WRC <30" unless otherwise marked
12B	WL, WP and PP will be designated for retention unless otherwise marked. Cut all DF, GF, WH, AF, LP, ES, WRC unless otherwise marked.	Cut All GF<32" & WRC <30" unless otherwise marked
13	WL, DF, WP and PP will be designated for retention unless otherwise marked. All DF will be designated to cut unless marked for retention. Cut all other GF, WH, AF, LP, ES, WRC unless otherwise marked.	Cut All WRC <30" unless otherwise marked
13A	WL, DF, WP and PP will be designated for retention unless otherwise marked. In 13A and 14, all DF will be designated for retention unless marked for retention. Cut all other GF, WH, AF, LP, ES, WRC unless otherwise marked.	Cut All WRC <30" unless otherwise marked
14	WL, WP and PP will be designated for retention unless otherwise marked. Cut all DF, GF, WH, AF, LP, ES, WRC unless otherwise marked.	Cut All WRC <30" unless otherwise marked
15	WL, WP and PP will be designated for retention unless otherwise marked. Cut all DF, GF, WH, AF, LP, ES, WRC unless otherwise marked.	N/A
15A	WL, WP and PP will be designated for retention unless otherwise marked. Cut all DF, GF, WH, AF, LP, ES, WRC unless otherwise marked.	N/A



Southern Charm Timber Sale
Coeur d'Alene River Ranger District
Idaho Panhandle National Forests
Sale Area, Hazard Reduction,
Site Preparation
Map



Scale = 1:15,840
40ft Contours



All Land Lines Approximate

Legend

- Closure to Use by Others, Gate, C5.41# (To be Closed), B6.22
- Protect Streamcourse, B6.5
- Existing Transportation System, B5.12, B6.22
- Specified Road Reconstruction, A.7, B5.2, B6.22
- R R R Hauling Restricted, B5.12, C5.12#
- A A A Public Use Restricted, B5.12, C5.12#
- K O Keep Road or Trail Open, B6.22
- L O P Limited Operating Period, C6.316#
- U U U Unsuitable for Hauling Prior to Completion of Agreed Reconstruction, B5.12, C5.12#
- H H H H H Hand Fireline Construction, C6.7
- W Dust Abatement Water Source, B5.2, B6.5
- T B C To Be Closed, C5.41#
- TAB Temporary Activity Barricades C5.41# (Closure to Use by Others), B6.22
- T Traffic Control Devices, B6.33

- Sale Area Boundary, B1.1
- Land Administered by National Forest
- Cutting Unit, B1.1, B2.3
- 422 Road Number

